



MLS 6412613 Land

\$25,000

0.35 Acres
Subdivided

1201 Unit 61 Tyler Avenue
Bemidji MN 56601

Status: Active

Description:

Tyler Hills CIC. Development of residential lots for you to build your new home. Convenient area on the east side of Bemidji with less than 10 minutes to Lake Bemidji boat accesses and less than 5 minutes to the Blue Ox Trail. Come find your favorite building site!

Additional Details:

Lot Acres	0.35
Lot Dimensions	88x170
School District	31
Taxes	\$56
Taxes with Assessments	\$56
Tax Year	2022

Additional Features:

Driving Directions:

From Keith's Pizza South take 1st St SE, turn left onto Lake Ave NE, right on Mill St NE, left on Tyler Ave NE. Tyler Hills will be on your left.



Listed By:
Realty Experts, LLC

Affinity Real Estate Inc. participates in the Regional Multiple Listing Service of Minnesota, Inc Broker Reciprocity (sm) program, allowing us to display other broker's listings on our website. All properties are subject to prior sale, change or withdrawal.



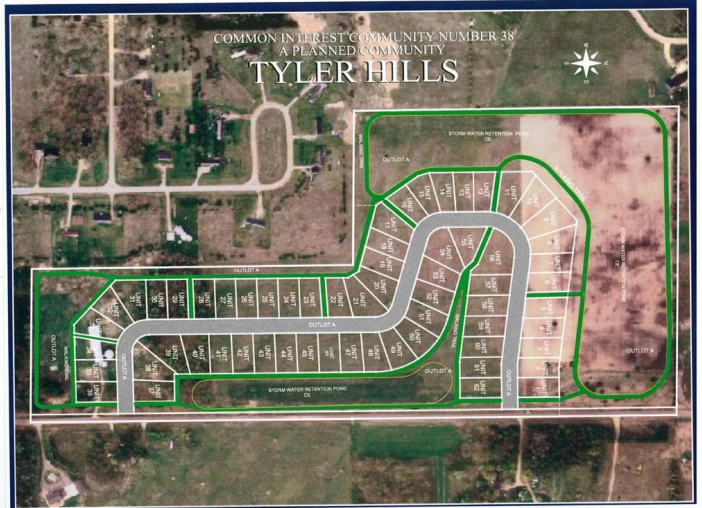
Call Affinity Real Estate

218-237-3333

info@affinityrealestate.com



Affinity Real Estate - 600 Park Avenue South - Park Rapids MN 56470



website: www.AffinityRealEstate.com | email: info@affinityrealestate.com | office: 218-237-3333 | fax:218-237-3377



\$25,000
MLS 6412613 Land
1201 Unit 61 Tyler Avenue
Bemidji MN 56601



website: www.AffinityRealEstate.com | email: info@affinityrealestate.com | office: 218-237-3333 | fax:218-237-3377



\$25,000
MLS 6412613 Land
1201 Unit 61 Tyler Avenue
Bemidji MN 56601