



MLS 6413172 Residential

**\$149,000**

908 sq ft  
4 bedrooms  
1 baths

2507 Bemidji Avenue  
Bemidji MN 56601

Status: Pending

**Description:**

Good rental or starter home in a convenient location. Lots of off street parking. Nice mix of pine trees and hardwoods. 4BR 1BA counting rooms in the basement with egress windows. Recent new metal roof, windows, insulation and water heater. High efficiency gas furnace. Low utility bills! House has good bones but will need some cleaning, painting and misc done by the new owner. Lot includes a unique old brick building that was once used as a guest house but has fallen into disrepair. Could be fixed back up as a guest house, workshop, she-shed or storage. Looking for a low priced home that's convenient to everything? Come check this one out!

**Additional Details:**

Year Built	1953
Lot Acres	0.36
Lot Dimensions	85 x 180
School District	31
Taxes	\$1,624
Taxes with Assessments	\$1,624
Tax Year	2024

**Additional Features:**

**Basement:** Block, Unfinished **Fuel:** Natural Gas **Heat:** Forced Air **Sewer:** City Sewer/Connected **Water:** City Water/Connected **Air Conditioning:** Window Unit(s)

**Driving Directions:**

N from CVS Pharmacy on Bemidji ave, home is on the left. (west)



Listed By:  
Headwaters Realty Services

Affinity Real Estate Inc. participates in the Regional Multiple Listing Service of Minnesota, Inc Broker Reciprocity (sm) program, allowing us to display other broker's listings on our website. All properties are subject to prior sale, change or withdrawal.



Call Affinity Real Estate

**218-237-3333**

[info@affinityrealestate.com](mailto:info@affinityrealestate.com)



Affinity Real Estate - 600 Park Avenue South - Park Rapids MN 56470



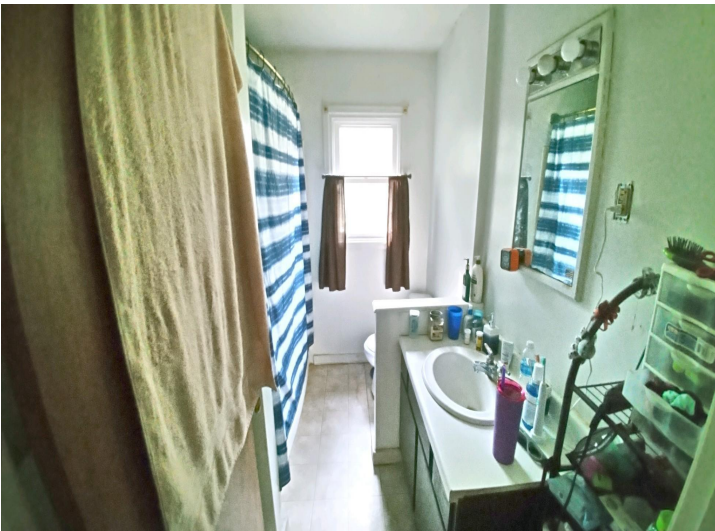
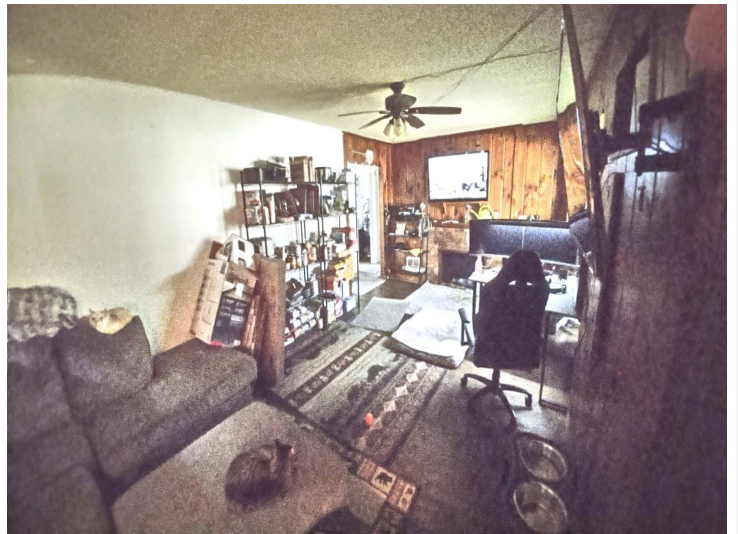


website: [www.AffinityRealEstate.com](http://www.AffinityRealEstate.com) | email: [info@affinityrealestate.com](mailto:info@affinityrealestate.com) | office: 218-237-3333 | fax: 218-237-3377

**Affinity**  
REAL ESTATE INC

**\$149,000**  
MLS 6413172 Residential  
2507 Bemidji Avenue  
Bemidji MN 56601





website: [www.AffinityRealEstate.com](http://www.AffinityRealEstate.com) | email: [info@affinityrealestate.com](mailto:info@affinityrealestate.com) | office: 218-237-3333 | fax: 218-237-3377



**\$149,000**  
 MLS 6413172 Residential  
 2507 Bemidji Avenue  
 Bemidji MN 56601





website: [www.AffinityRealEstate.com](http://www.AffinityRealEstate.com) | email: [info@affinityrealestate.com](mailto:info@affinityrealestate.com) | office: 218-237-3333 | fax: 218-237-3377

**Affinity**  
REAL ESTATE INC

**\$149,000**  
MLS 6413172 Residential  
2507 Bemidji Avenue  
Bemidji MN 56601





website: [www.AffinityRealEstate.com](http://www.AffinityRealEstate.com) | email: [info@affinityrealestate.com](mailto:info@affinityrealestate.com) | office: 218-237-3333 | fax:218-237-3377



**\$149,000**  
MLS 6413172 Residential  
2507 Bemidji Avenue  
Bemidji MN 56601