



MLS 6415461 Land

\$224,000

1.83 Acres
Raw Land

xxxx County Rd 11
Breezy Point MN 56472

Status: Active

Description:

Great location for you to build your business located on County Rd 11 across from school next to Pine River State Bank.

Additional Details:

Lot Acres	1.83
Lot Dimensions	199x400x400x199
School District	186
Taxes	\$640
Taxes with Assessments	\$640
Tax Year	2023

Additional Features:

Driving Directions:

From gate of Breezy Point Resort follow County Rd 11 west to lot on right next to Pine River State Bank



Listed By:
Breezy Point Real Estate

Affinity Real Estate Inc. participates in the Regional Multiple Listing Service of Minnesota, Inc Broker Reciprocity (sm) program, allowing us to display other broker's listings on our website. All properties are subject to prior sale, change or withdrawal.



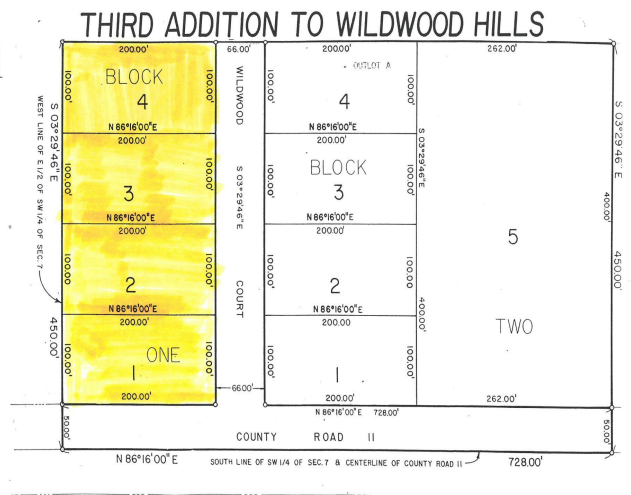
Call Affinity Real Estate

218-237-3333

info@affinityrealestate.com



Affinity Real Estate - 600 Park Avenue South - Park Rapids MN 56470



website: www.AffinityRealEstate.com | email: info@affinityrealestate.com | office: 218-237-3333 | fax: 218-237-3377



\$224,000
 MLS 6415461 Land
 xxxx County Rd 11
 Breezy Point MN 56472