



MLS 6416112 Lake Home

**\$774,000**

2,833 sq ft  
4 bedrooms  
3 baths

34142 Camp Cherith Road  
Frazee MN 56544

Waterfront: Scalp

Status: Pending

**Description:**

Lake Seven 1.2 ACRE with no elevation leading to 150+ff of crystal clear & sandy GEM! Summer is right around the corner & this amazing home nestled in a tranquil setting could be your dream oasis. Newer well, all newer mechanicals, compliant septic, dock included. Giant master suite on main flr., vaulted living & dining room w/large bay window to watch the morning loons. MANY windows to fill the home w/ natural light. The 3 season w/electric heat is the spot to watch over beautiful sunsets & lake activities. Great kitchen, lots of cabinets, storage closets and pantry. Entertain your guests w/the ornate wet bar or bring them downstairs to the hub of entertainment walkout bsmnt. full of extras! This level includes multiple bedrooms, bonus rms, a lg. full bath, craft/storage rms, & fish cleaning station flexible for guests or hobbies. It's a perfect balance of convenience, relaxation and hosting for all gatherings! \*PLUS detached 2.5 stall w/htd shop/bunk house & wrap around driveway

**Additional Details:**

Year Built	1978
Lot Acres	1.19
Lot Dimensions	Irregular
Garage Stalls	5
School District	23
Taxes	\$5,704
Taxes with Assessments	\$5,784
Tax Year	2023

**Additional Features:**

**Basement:** Full, Walkout **Fuel:** Electric, Propane **Garage:** 5 **Heat:** Baseboard, Forced Air, Fireplace(s) **Sewer:** Private Sewer, Septic System Compliant - Yes, Tank with Drainage Field **Water:** Submersible - 4 Inch, Private **Air Conditioning:** Central Air

**Driving Directions:**

Go SE on Hwy 10 NW, take a right on Eagle Lake Rd. Take a right on Lake Six Rd. Take a left on Camp Cherith Rd, stop at 34142.



Listed By:  
The Real Estate Company of Detroit Lakes

Affinity Real Estate Inc. participates in the Regional Multiple Listing Service of Minnesota, Inc Broker Reciprocity (sm) program, allowing us to display other broker's listings on our website. All properties are subject to prior sale, change or withdrawal.



**Call Affinity Real Estate**

**218-237-3333**

**info@affinityrealestate.com**



**Affinity Real Estate - 600 Park Avenue South - Park Rapids MN 56470**



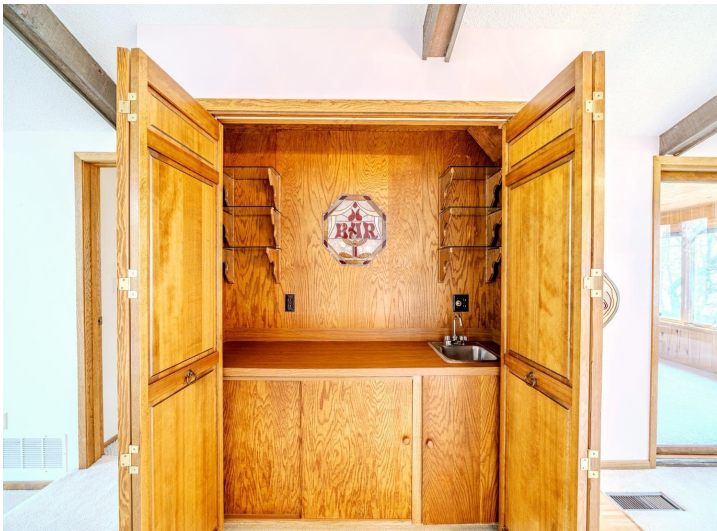


website: [www.AffinityRealEstate.com](http://www.AffinityRealEstate.com) | email: [info@affinityrealestate.com](mailto:info@affinityrealestate.com) | office: 218-237-3333 | fax:218-237-3377

**Affinity**  
REAL ESTATE INC

**\$774,000**  
MLS 6416112 Lake Home  
34142 Camp Cherith Road  
Frazee MN 56544



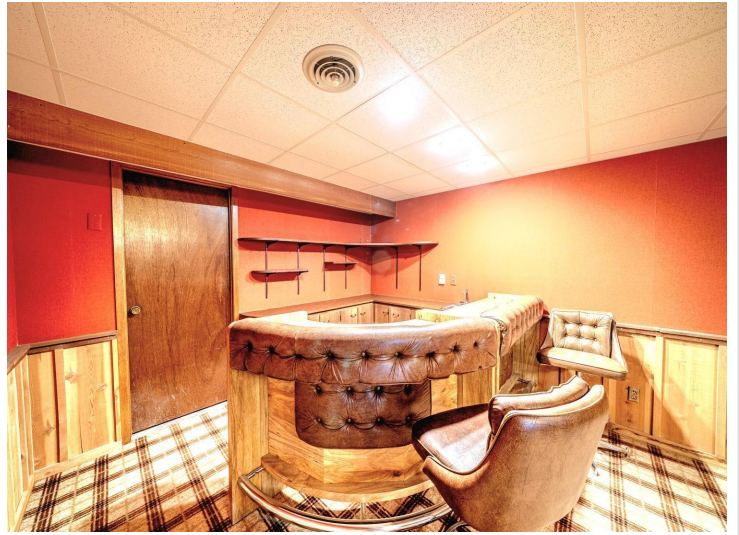


website: [www.AffinityRealEstate.com](http://www.AffinityRealEstate.com) | email: [info@affinityrealestate.com](mailto:info@affinityrealestate.com) | office: 218-237-3333 | fax:218-237-3377



**\$774,000**  
MLS 6416112 Lake Home  
34142 Camp Cherith Road  
Frazee MN 56544



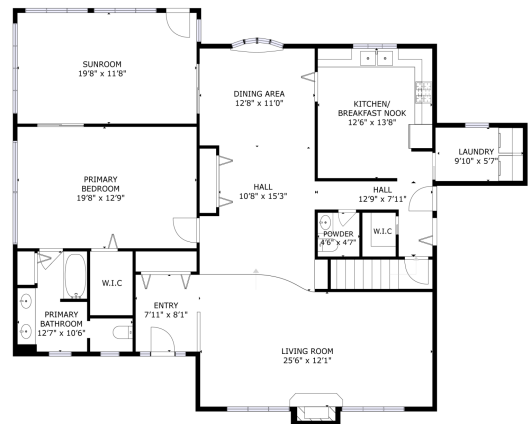


website: [www.AffinityRealEstate.com](http://www.AffinityRealEstate.com) | email: [info@affinityrealestate.com](mailto:info@affinityrealestate.com) | office: 218-237-3333 | fax:218-237-3377

**Affinity**  
REAL ESTATE INC

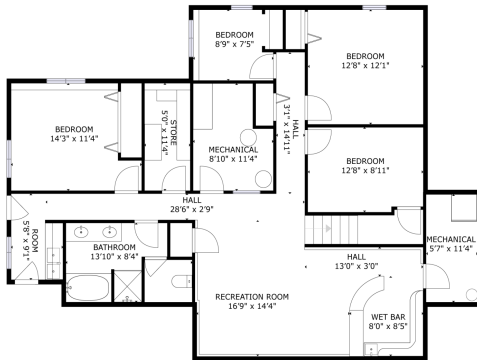
**\$774,000**  
MLS 6416112 Lake Home  
34142 Camp Cherith Road  
Frazee MN 56544





FLOOR 1

GROSS INTERNAL AREA  
 BASEMENT 1: 1259 sq.R, FLOOR 1: 1743 sq.R  
 TOTAL: 3002 sq.R  
SIZE IS APPROXIMATE AND SUBJECT TO ACTUAL MEASUREMENT



BASEMENT 1

GROSS INTERNAL AREA  
 BASEMENT 1: 1259 sq.R, FLOOR 1: 1743 sq.R  
 TOTAL: 3002 sq.R  
SIZE IS APPROXIMATE AND SUBJECT TO ACTUAL MEASUREMENT



website: [www.AffinityRealEstate.com](http://www.AffinityRealEstate.com) | email: [info@affinityrealestate.com](mailto:info@affinityrealestate.com) | office: 218-237-3333 | fax: 218-237-3377



**\$774,000**  
 MLS 6416112 Lake Home  
 34142 Camp Cherith Road  
 Frazee MN 56544