



MLS 6417326 Land

**\$12,500**

0.57 Acres  
Raw Land

Lot 7 Blue Ridge Drive  
Breezy Point MN 56472

Status: Active



**Description:**

Great lot in Breezy Point to build your dream home. Close to breezy point resort, restaurants, clinic, golf, schools

**Additional Details:**

Lot Acres	0.57
Lot Dimensions	66x162x68x160x195
School District	186
Taxes	\$70
Taxes with Assessments	\$70
Tax Year	2023

**Additional Features:**

**Driving Directions:**

From gates of Breezy Point resort turn right on County rd 11 to left on Buschmann Rd to left on Green Scene Dr to right on Blue Ridge dr follow to the cul de sac on blue ridge



Listed By:  
Breezy Point Real Estate

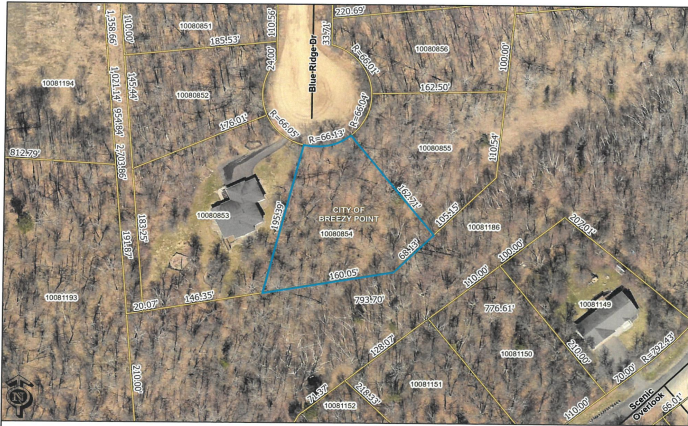
Affinity Real Estate Inc. participates in the Regional Multiple Listing Service of Minnesota, Inc Broker Reciprocity (sm) program, allowing us to display other broker's listings on our website. All properties are subject to prior sale, change or withdrawal.



Call Affinity Real Estate  
**218-237-3333**  
[info@affinityrealestate.com](mailto:info@affinityrealestate.com)



Affinity Real Estate - 600 Park Avenue South - Park Rapids MN 56470



These data are provided on an "AS-IS" basis, without warranty of any type, expressed or implied, including but not limited to any warranty as to their performance, merchantability, or fitness for any particular purpose.

Date: 5/24/2022 Time: 10:37:52 AM



website: [www.AffinityRealEstate.com](http://www.AffinityRealEstate.com) | email: [info@affinityrealestate.com](mailto:info@affinityrealestate.com) | office: 218-237-3333 | fax: 218-237-3377



**\$12,500**  
MLS 6417326 Land  
Lot 7 Blue Ridge Drive  
Breezy Point MN 56472