



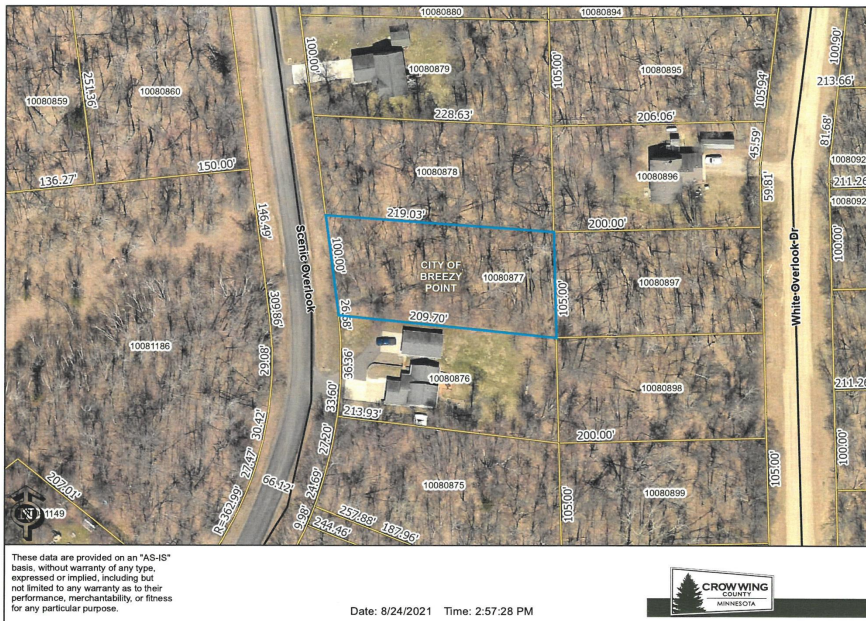
MLS 6417366 Land

\$12,500

0.49 Acres
Raw Land

Lot 25 Scenic Overlook
Breezy Point MN 56472

Status: Active



Description:

Great lot in Breezy Point to build your dream home. Close to breezy point resort, restaurants, clinic, golf, schools.

Additional Details:

Lot Acres	0.49
Lot Dimensions	100x209x105x218
School District	186
Taxes	\$388
Taxes with Assessments	\$388
Tax Year	2023

Additional Features:

Driving Directions:

From gates of Breezy Point Resort turn right onto County Rd 11 follow to left on Buschmann to left on Green Scene Dr to right on Blue Ridge Dr follow to left on Scenic Overlook



Listed By:
Breezy Point Real Estate

Affinity Real Estate Inc. participates in the Regional Multiple Listing Service of Minnesota, Inc Broker Reciprocity (sm) program, allowing us to display other broker's listings on our website. All properties are subject to prior sale, change or withdrawal.



Call Affinity Real Estate

218-237-3333

info@affinityrealestate.com



Affinity Real Estate - 600 Park Avenue South - Park Rapids MN 56470



These data are provided on an "AS-IS" basis, without warranty of any type, expressed or implied, including but not limited to any warranty as to their performance, merchantability, or fitness for any particular purpose.

Date: 8/24/2021 Time: 2:57:28 PM



website: www.AffinityRealEstate.com | email: info@affinityrealestate.com | office: 218-237-3333 | fax:218-237-3377



\$12,500
MLS 6417366 Land
Lot 25 Scenic Overlook
Breezy Point MN 56472