



MLS 6418493 Lake Land

\$175,000

Description:

Nestled between the charming towns of Detroit Lakes and Park Rapids, this wooded lake lot offers the perfect retreat on the serene shores Height of Land Lake. Imagine waking up to the gentle rustling of leaves and the tranquil lapping of water, surrounded by lush trees that paint the landscape with vibrant hues from spring through fall. With the North Country Scenic Trail and Tamarac National Wildlife Refuge nearby, adventure and natural beauty are at your doorstep. Whether you're seeking a peaceful escape or an outdoor enthusiast's paradise to build your new home, this slice of nature promises both relaxation and exploration in equal measure.

Additional Details:

Lot Acres	1.39
Lot Dimensions	150x430x42x235x291
School District	23
Taxes	\$642
Taxes with Assessments	\$642
Tax Year	2023

Additional Features:

Driving Directions:

From MN State Hwy 34, turn north onto SW Height of Land Dr, then turn right onto Perrine Dr. and property is at the corner.



Listed By:
Counselor Realty of Detroit Lakes

Affinity Real Estate Inc. participates in the Regional Multiple Listing Service of Minnesota, Inc Broker Reciprocity (sm) program, allowing us to display other broker's listings on our website. All properties are subject to prior sale, change or withdrawal.



Call Affinity Real Estate

218-237-3333

info@affinityrealestate.com



Affinity Real Estate - 600 Park Avenue South - Park Rapids MN 56470



website: www.AffinityRealEstate.com | email: info@affinityrealestate.com | office: 218-237-3333 | fax: 218-237-3377



\$175,000

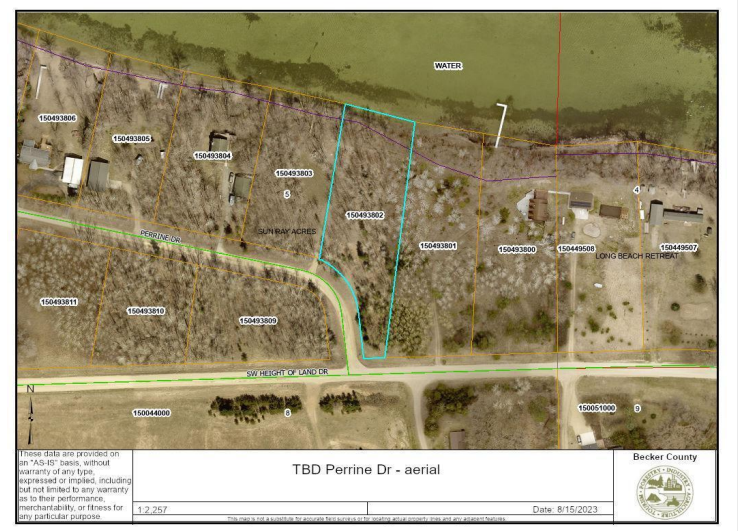
MLS 6418493 Lake Land
TBD Perrine Dr
Rochert MN 56589



website: www.AffinityRealEstate.com | email: info@affinityrealestate.com | office: 218-237-3333 | fax: 218-237-3377



\$175,000
MLS 6418493 Lake Land
TBD Perrine Dr
Rochert MN 56589



website: www.AffinityRealEstate.com | email: info@affinityrealestate.com | office: 218-237-3333 | fax: 218-237-3377



\$175,000
 MLS 6418493 Lake Land
 TBD Perrine Dr
 Rochert MN 56589