



MLS 6418671 Lake Home

\$489,000

3,350 sq ft
4 bedrooms
3 baths

49839 Spruce Road
Motley MN 56466

Waterfront: Crow Wing River

Status: Active

Description:

This property offers a 4 bedroom, custom-built home situated on 4 acres with 670ft on the Crow Wing River River! Relax and watch the eagles soar from their nest located at the top of the white pine at the bend of the river. Features: open floor concept on the main level with large windows in the kitchen/living/dining area and deck with breathtaking views of the river; custom kitchen with granite countertops and breakfast bar; 2 bedrooms on main level and 2 on lower level; 3 full bathrooms; main-level laundry; walk-in closets in bedrooms; 3 car attached garage and extra 26x27 detached shed; newly sealed driveway; beautiful elevation to the river; spacious walk-out lower level with large family room. Ideal location only 5 minutes to Lakewood Health System, 25 from the Brainerd Lakes Area and 2 hrs from Metro. Canoe, kayak, fish (secret hole out front) and take in the beauty and nature....

Additional Details:

Year Built	1998
Lot Acres	3.9
Lot Dimensions	670x253x694x191
Garage Stalls	3
School District	2170
Taxes	\$3,462
Taxes with Assessments	\$3,462
Tax Year	2023

Additional Features:

Basement: Block, Daylight/Lookout Windows, Drain Tiled, Drainage System, Finished, Full, Storage Space, Walkout **Fuel:** Electric, Pellet, Propane
Garage: 3 **Heat:** Dual, Forced Air **Sewer:** Tank with Drainage Field **Water:** Drilled **Air Conditioning:** Central Air

Driving Directions:

From Motley, West on Hwy 10 for approximately 2 mi., Right on Spruce Road for .7 mi. to property on Left.



Listed By:
Edina Realty, Inc.

Affinity Real Estate Inc. participates in the Regional Multiple Listing Service of Minnesota, Inc Broker Reciprocity (sm) program, allowing us to display other broker's listings on our website. All properties are subject to prior sale, change or withdrawal.



Call Affinity Real Estate

218-237-3333

info@affinityrealestate.com



Affinity Real Estate - 600 Park Avenue South - Park Rapids MN 56470



website: www.AffinityRealEstate.com | email: info@affinityrealestate.com | office: 218-237-3333 | fax: 218-237-3377

Affinity
REAL ESTATE INC

\$489,000

MLS 6418671 Lake Home
49839 Spruce Road
Motley MN 56466



website: www.AffinityRealEstate.com | email: info@affinityrealestate.com | office: 218-237-3333 | fax: 218-237-3377

Affinity
REAL ESTATE INC

\$489,000
MLS 6418671 Lake Home
49839 Spruce Road
Motley MN 56466



website: www.AffinityRealEstate.com | email: info@affinityrealestate.com | office: 218-237-3333 | fax: 218-237-3377

Affinity
REAL ESTATE INC

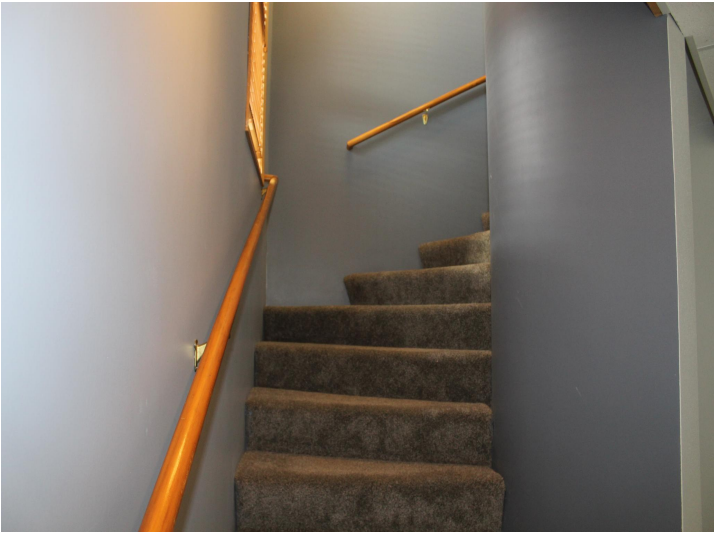
\$489,000
MLS 6418671 Lake Home
49839 Spruce Road
Motley MN 56466



website: www.AffinityRealEstate.com | email: info@affinityrealestate.com | office: 218-237-3333 | fax: 218-237-3377



\$489,000
MLS 6418671 Lake Home
49839 Spruce Road
Motley MN 56466



website: www.AffinityRealEstate.com | email: info@affinityrealestate.com | office: 218-237-3333 | fax: 218-237-3377



\$489,000
 MLS 6418671 Lake Home
 49839 Spruce Road
 Motley MN 56466



website: www.AffinityRealEstate.com | email: info@affinityrealestate.com | office: 218-237-3333 | fax: 218-237-3377



\$489,000
MLS 6418671 Lake Home
49839 Spruce Road
Motley MN 56466