



MLS 6418681 Residential

**\$449,000**

1,586 sq ft  
3 bedrooms  
2 baths

8300 52nd Street  
Verndale MN 56481

Status: Hold

**Description:**

Don't miss this three bedroom, two bath ranch-style home situated on over 80 acres of prime land. You will love all of the additional buildings and all the room you can imagine for all of your animals. This property features a heated and insulated attached garage, a beautiful wrap around, covered porch, a detached 26X56 garage for extra storage for all of your equipment, and an unfinished basement. You will love all that farm life has to offer here on this perfect setting. Schedule your showing today.

**Additional Details:**

Year Built	1982
Lot Acres	80
Lot Dimensions	1350x2634x1330xirr
Garage Stalls	2
School District	2170
Taxes	\$1,364
Taxes with Assessments	\$1,364
Tax Year	2023

**Additional Features:**

**Basement:** Block, Daylight/Lookout Windows, Drainage System, Full, Slab, Storage Space, Sump Pump, Unfinished **Fuel:** Electric **Garage:** 2  
**Heat:** Baseboard, Forced Air, Outdoor Boiler **Sewer:** Private Sewer, Septic System Compliant - Yes, Tank with Drainage Field **Water:** Submersible - 4 Inch, Drilled, Private, Well **Air Conditioning:** Central Air

**Driving Directions:**

Hwy 64 North to 53rd



Listed By:  
eXp Realty

Affinity Real Estate Inc. participates in the Regional Multiple Listing Service of Minnesota, Inc Broker Reciprocity (sm) program, allowing us to display other broker's listings on our website. All properties are subject to prior sale, change or withdrawal.



Call Affinity Real Estate

**218-237-3333**

[info@affinityrealestate.com](mailto:info@affinityrealestate.com)



Affinity Real Estate - 600 Park Avenue South - Park Rapids MN 56470



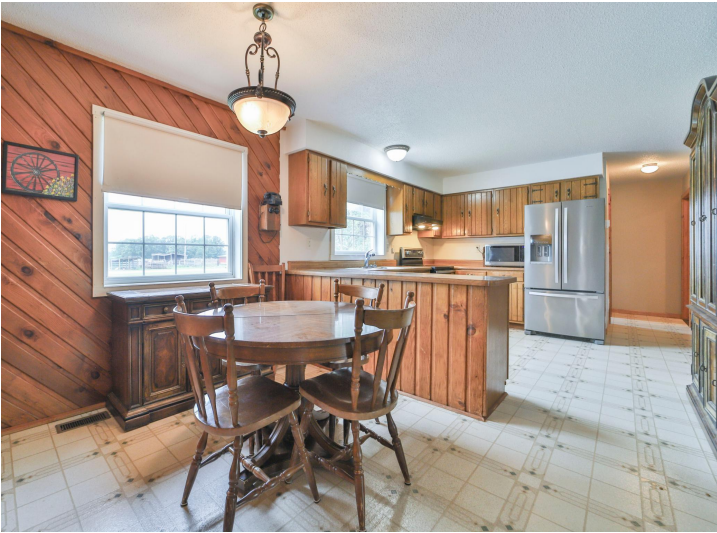


website: [www.AffinityRealEstate.com](http://www.AffinityRealEstate.com) | email: [info@affinityrealestate.com](mailto:info@affinityrealestate.com) | office: 218-237-3333 | fax:218-237-3377

**Affinity**  
REAL ESTATE INC

**\$449,000**  
MLS 6418681 Residential  
8300 52nd Street  
Verndale MN 56481





website: [www.AffinityRealEstate.com](http://www.AffinityRealEstate.com) | email: [info@affinityrealestate.com](mailto:info@affinityrealestate.com) | office: 218-237-3333 | fax: 218-237-3377

**Affinity**  
REAL ESTATE INC

**\$449,000**  
MLS 6418681 Residential  
8300 52nd Street  
Verndale MN 56481





website: [www.AffinityRealEstate.com](http://www.AffinityRealEstate.com) | email: [info@affinityrealestate.com](mailto:info@affinityrealestate.com) | office: 218-237-3333 | fax: 218-237-3377

**Affinity**  
REAL ESTATE INC

**\$449,000**  
MLS 6418681 Residential  
8300 52nd Street  
Verndale MN 56481





website: [www.AffinityRealEstate.com](http://www.AffinityRealEstate.com) | email: [info@affinityrealestate.com](mailto:info@affinityrealestate.com) | office: 218-237-3333 | fax:218-237-3377

**Affinity**  
REAL ESTATE INC

**\$449,000**  
MLS 6418681 Residential  
8300 52nd Street  
Verndale MN 56481





website: [www.AffinityRealEstate.com](http://www.AffinityRealEstate.com) | email: [info@affinityrealestate.com](mailto:info@affinityrealestate.com) | office: 218-237-3333 | fax:218-237-3377

**Affinity**  
REAL ESTATE INC

**\$449,000**  
MLS 6418681 Residential  
8300 52nd Street  
Verndale MN 56481





website: [www.AffinityRealEstate.com](http://www.AffinityRealEstate.com) | email: [info@affinityrealestate.com](mailto:info@affinityrealestate.com) | office: 218-237-3333 | fax:218-237-3377



**\$449,000**  
MLS 6418681 Residential  
8300 52nd Street  
Verndale MN 56481





website: [www.AffinityRealEstate.com](http://www.AffinityRealEstate.com) | email: [info@affinityrealestate.com](mailto:info@affinityrealestate.com) | office: 218-237-3333 | fax:218-237-3377



**\$449,000**  
MLS 6418681 Residential  
8300 52nd Street  
Verndale MN 56481