



MLS 6419162 Land

**\$175,000**

2.82 Acres  
Raw Land

L3B1 Mag Seven Court  
Bemidji MN 56601

Status: Active



**Description:**

This partially wooded 2.82 acre lot presents an outstanding opportunity for commercial development, especially due to its favorable location in close proximity to highway access and Jefferson Ave. Located close to schools, City of Bemidji amenities, shopping, restaurants and Lake Bemidji is not far away. The convenience of underground utilities is a modern and attractive feature, enhancing the aesthetic appeal of the area. City-maintained blacktop roads further contribute to the overall accessibility and visual appeal of the development.

**Additional Details:**

Lot Acres	2.82
Lot Dimensions	260x508x306x388
School District	31
Taxes	\$2,014
Taxes with Assessments	\$2,014
Tax Year	2024

**Additional Features:**

**Driving Directions:**

West on Division St, left on Mag Seven Ct SW. Lot on the right.



Listed By:  
CENTURY 21 Dickinson Realtors

Affinity Real Estate Inc. participates in the Regional Multiple Listing Service of Minnesota, Inc Broker Reciprocity (sm) program, allowing us to display other broker's listings on our website. All properties are subject to prior sale, change or withdrawal.



Call Affinity Real Estate

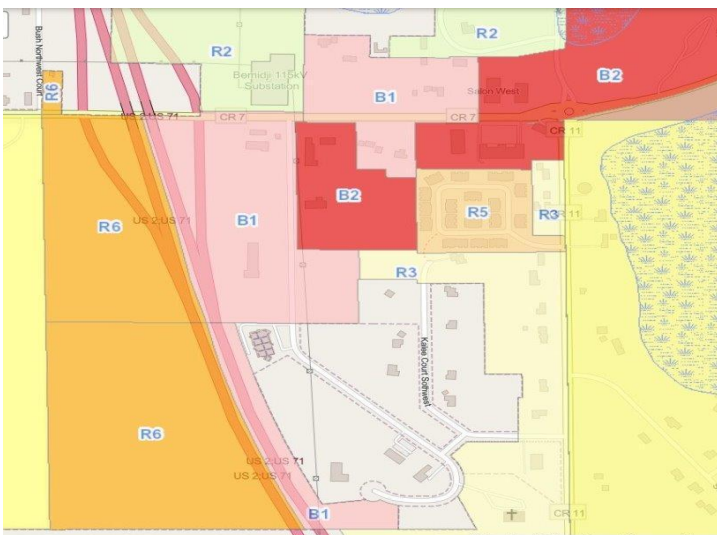
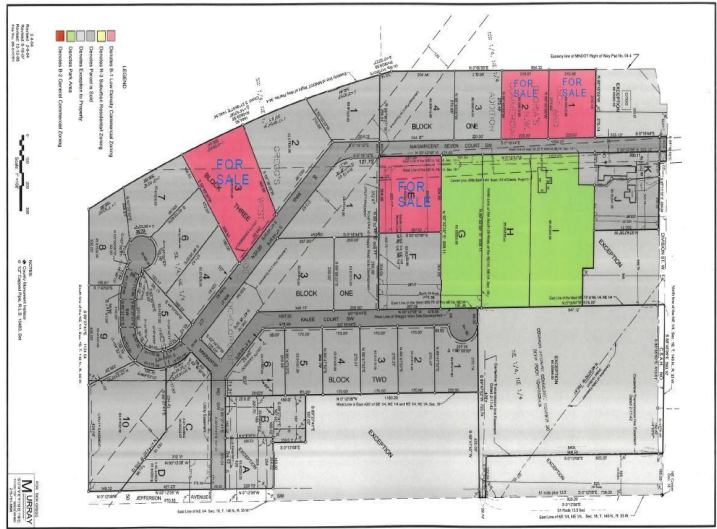
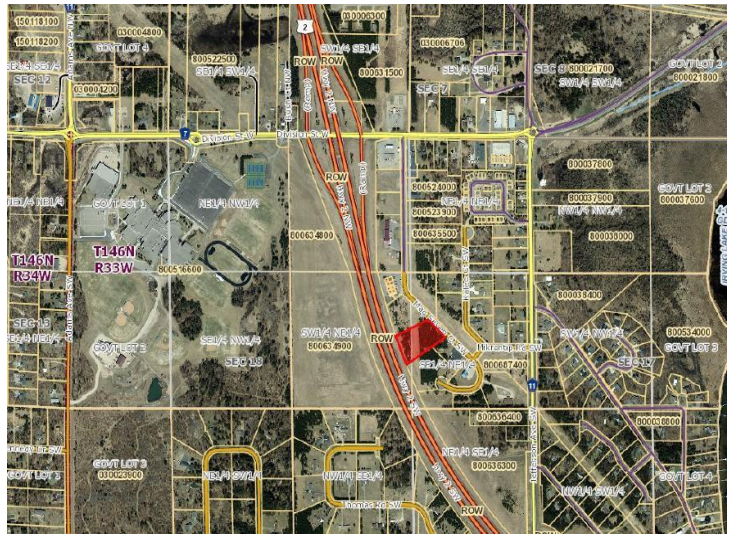
**218-237-3333**

[info@affinityrealestate.com](mailto:info@affinityrealestate.com)



Affinity Real Estate - 600 Park Avenue South - Park Rapids MN 56470





website: [www.AffinityRealEstate.com](http://www.AffinityRealEstate.com) | email: [info@affinityrealestate.com](mailto:info@affinityrealestate.com) | office: 218-237-3333 | fax:218-237-3377



**\$175,000**  
 MLS 6419162 Land  
 L3B1 Mag Seven Court  
 Bemidji MN 56601