



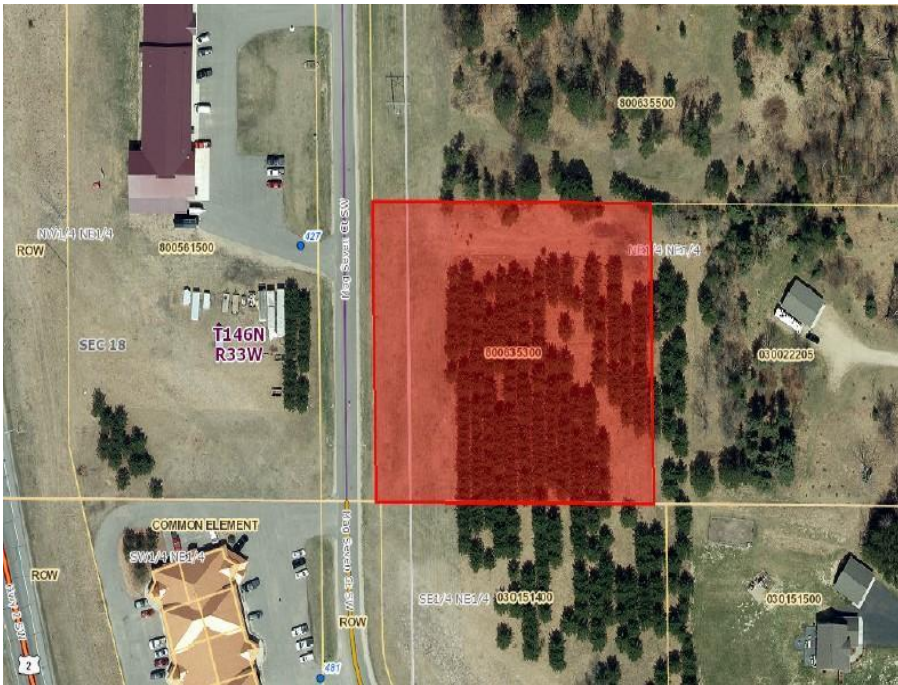
MLS 6419275 Land

**\$175,000**

2 Acres  
Raw Land

Lot E Mag Seven Court  
Bemidji MN 56601

Status: Active



**Description:**

This 2 acre lot presents an outstanding opportunity for commercial development, especially due to its favorable location in close proximity to highway access. A nice stand of pine trees offers privacy close to town. The presence of city sewer and water connections in close proximity is a significant advantage. Located close to schools, City of Bemidji amenities, shopping, waterfront and restaurants. The convenience of underground utilities is a modern and attractive feature, enhancing the aesthetic appeal of the area. City-maintained blacktop roads further contribute to the overall accessibility and visual appeal of the development.

**Additional Details:**

Lot Acres	2
Lot Dimensions	287x304
School District	31
Taxes	\$474
Taxes with Assessments	\$474
Tax Year	2023

**Additional Features:**

**Driving Directions:**

West on Division St, left on Mag Seven Ct SW. Lot on the left.



Listed By:  
CENTURY 21 Dickinson Realtors

Affinity Real Estate Inc. participates in the Regional Multiple Listing Service of Minnesota, Inc Broker Reciprocity (sm) program, allowing us to display other broker's listings on our website. All properties are subject to prior sale, change or withdrawal.



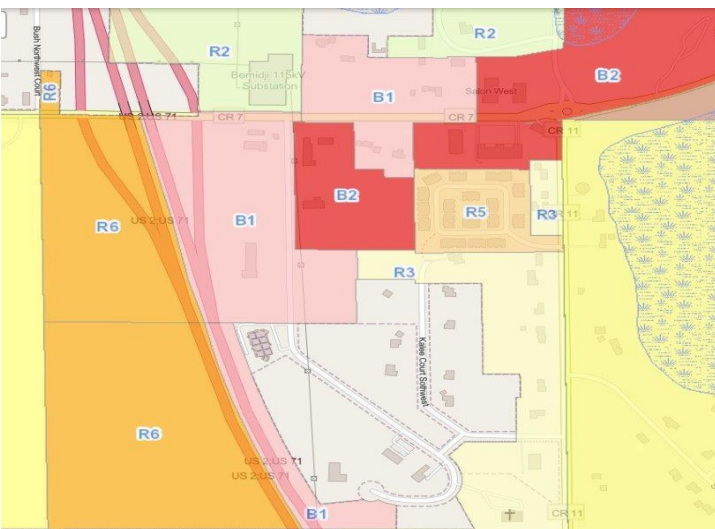
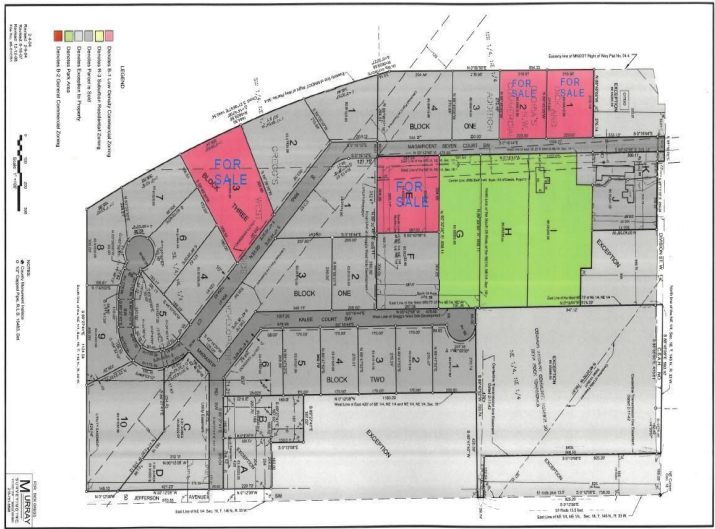
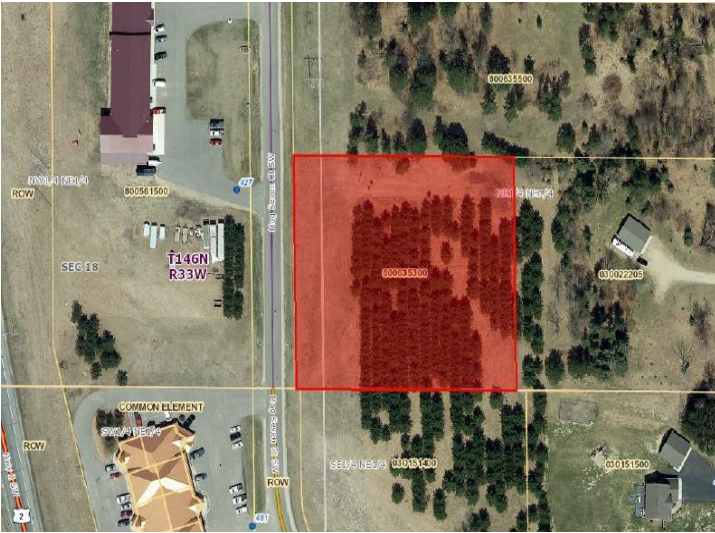
Call Affinity Real Estate

**218-237-3333**

[info@affinityrealestate.com](mailto:info@affinityrealestate.com)



Affinity Real Estate - 600 Park Avenue South - Park Rapids MN 56470



website: [www.AffinityRealEstate.com](http://www.AffinityRealEstate.com) | email: [info@affinityrealestate.com](mailto:info@affinityrealestate.com) | office: 218-237-3333 | fax:218-237-3377



**\$175,000**  
 MLS 6419275 Land  
 Lot E Mag Seven Court  
 Bemidji MN 56601