



MLS 6421283 Commercial Sale

**\$495,000**

**Description:**

A well established and successful lumber yard in Northern Minnesota. Included are six buildings located on six city lots, the fixtures and inventory. Also included is a pickup truck, 2 trucks, 2 trailers, a bobcat and a fork lift.

**Additional Details:**

Year Built	2001
Lot Acres	0.52
Lot Dimensions	114x300xIrr
School District	820
Taxes	\$3,882
Taxes with Assessments	\$5,652
Tax Year	2023

**Additional Features:**

**Fuel:** Natural Gas **Heat:** Forced Air **Sewer:** City Sewer/Connected **Water:** City Water/Connected **Air Conditioning:** Central Air

**Driving Directions:**

From Hwys. 71/34 in Park Rapids. South on Hwy 71 to Sebeka. Left on Minnesota Ave. E. The property is on your right (see 2 aerial photos).



Listed By:  
Coldwell Banker Crown Realtors

Affinity Real Estate Inc. participates in the Regional Multiple Listing Service of Minnesota, Inc Broker Reciprocity (sm) program, allowing us to display other broker's listings on our website. All properties are subject to prior sale, change or withdrawal.



Call Affinity Real Estate

**218-237-3333**

[info@affinityrealestate.com](mailto:info@affinityrealestate.com)



Affinity Real Estate - 600 Park Avenue South - Park Rapids MN 56470



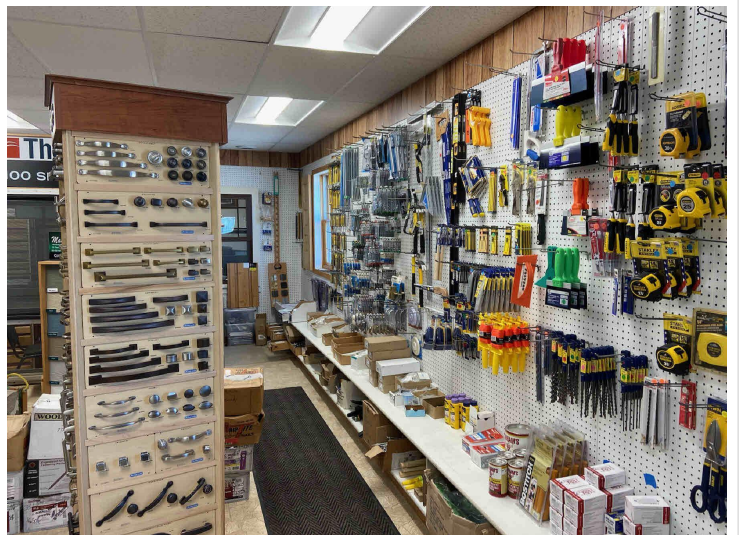
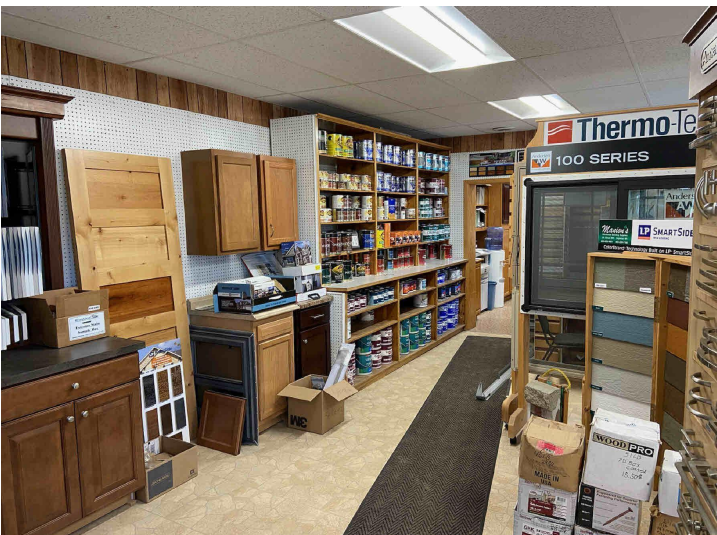


website: [www.AffinityRealEstate.com](http://www.AffinityRealEstate.com) | email: [info@affinityrealestate.com](mailto:info@affinityrealestate.com) | office: 218-237-3333 | fax:218-237-3377



**\$495,000**  
MLS 6421283 Commercial  
Sale  
201 Minnesota Avenue  
Sebeko MN 56477



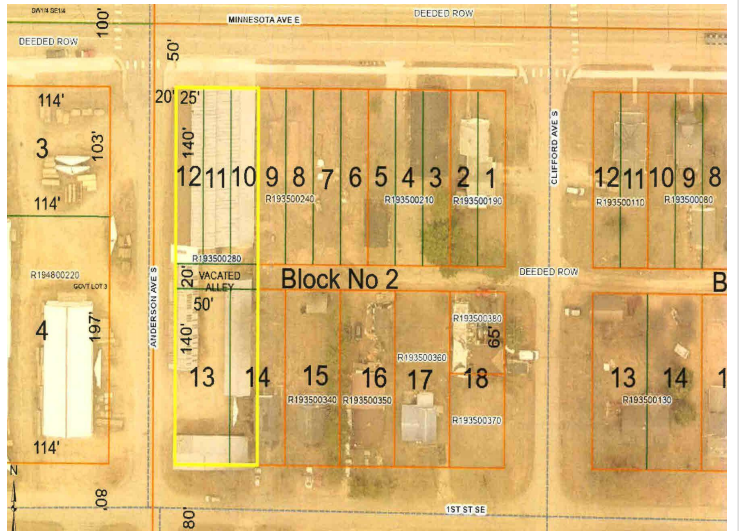
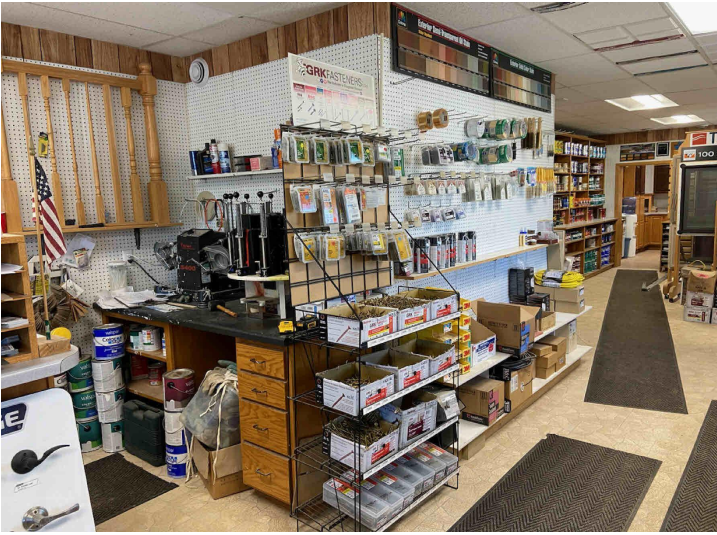


website: [www.AffinityRealEstate.com](http://www.AffinityRealEstate.com) | email: [info@affinityrealestate.com](mailto:info@affinityrealestate.com) | office: 218-237-3333 | fax: 218-237-3377

**Affinity**  
REAL ESTATE INC

**\$495,000**  
MLS 6421283 Commercial  
Sale  
201 Minnesota Avenue  
Sebeka MN 56477



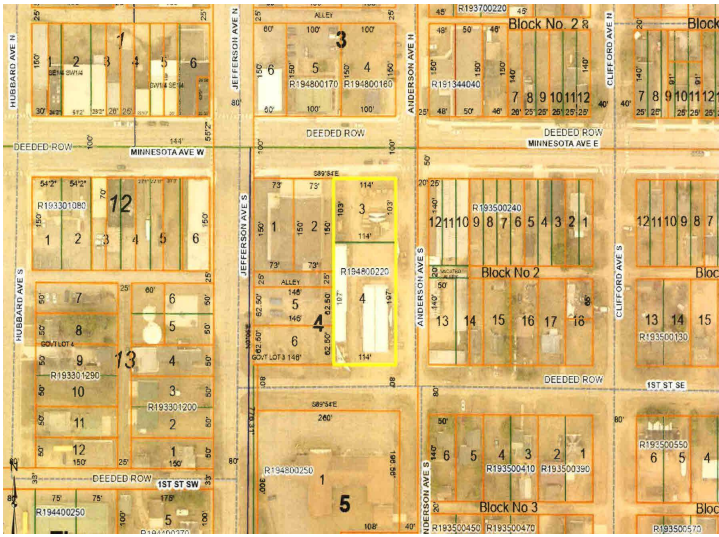


website: [www.AffinityRealEstate.com](http://www.AffinityRealEstate.com) | email: [info@affinityrealestate.com](mailto:info@affinityrealestate.com) | office: 218-237-3333 | fax: 218-237-3377



**\$495,000**  
 MLS 6421283 Commercial  
 Sale  
 201 Minnesota Avenue  
 Sebeka MN 56477





website: [www.AffinityRealEstate.com](http://www.AffinityRealEstate.com) | email: [info@affinityrealestate.com](mailto:info@affinityrealestate.com) | office: 218-237-3333 | fax:218-237-3377



**\$495,000**  
 MLS 6421283 Commercial  
 Sale  
 201 Minnesota Avenue  
 Sebeka MN 56477