



MLS 6421521 Residential

\$172,000

1,580 sq ft
4 bedrooms
2 baths

18105 Golf View Lane
Bagley MN 56621

Status: Closed

Description:

Great opportunity to have a home, acreage, insulated garage and huge storage shed close to town!! Property consists of 33.87 acres that are all wooded and just outside of Bagley on a dead end road, so limited traffic, plus the home is very private thanks to the long driveway. The 4 bdrm-2 bath home needs some TLC but would be an awesome project where you could put your own personal touches on the paint/carpet/updates, covered 6' x 20' front porch, large 8' x 24' deck, 24' x 36 insulated garage, 30' x 40' pole building for storage.

Additional Details:

Year Built	1979
Lot Acres	33.87
Lot Dimensions	1320x1320
Garage Stalls	2
School District	162
Taxes	\$970
Taxes with Assessments	\$970
Tax Year	2023

Additional Features:

Fuel: Electric **Heat:** Baseboard

Driving Directions:

From stoplights in Bagley, north on #92 for 4 blocks, right on 4th St for 1/3 miles and road turns into Golf View Ln, continue on for 1/4 miles and the property will be on your right.



Listed By:
Realty Experts, LLC

Affinity Real Estate Inc. participates in the Regional Multiple Listing Service of Minnesota, Inc Broker Reciprocity (sm) program, allowing us to display other broker's listings on our website. All properties are subject to prior sale, change or withdrawal.



Call Affinity Real Estate

218-237-3333

info@affinityrealestate.com



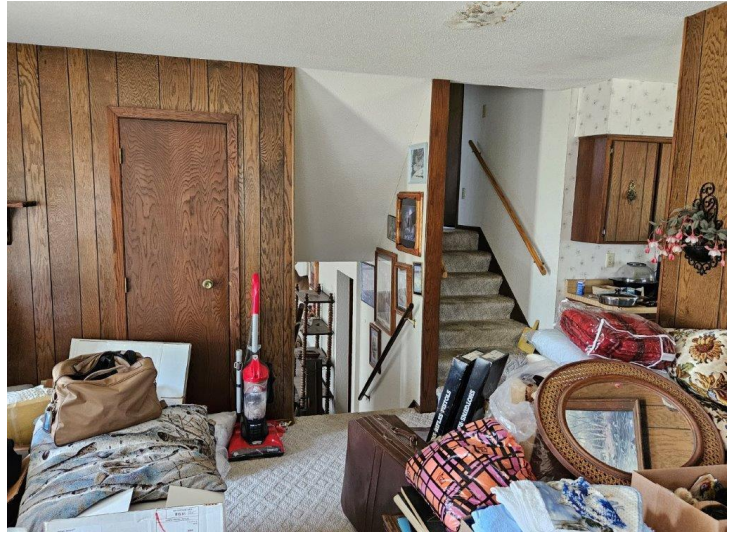
Affinity Real Estate - 600 Park Avenue South - Park Rapids MN 56470



website: www.AffinityRealEstate.com | email: info@affinityrealestate.com | office: 218-237-3333 | fax: 218-237-3377

Affinity
REAL ESTATE INC

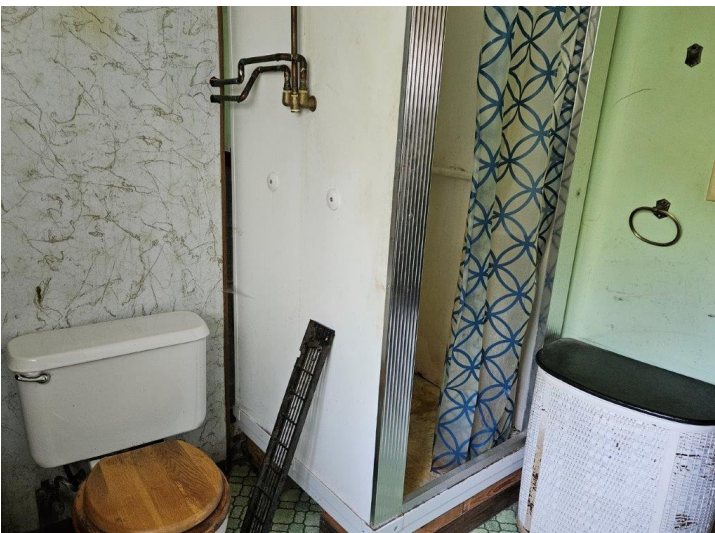
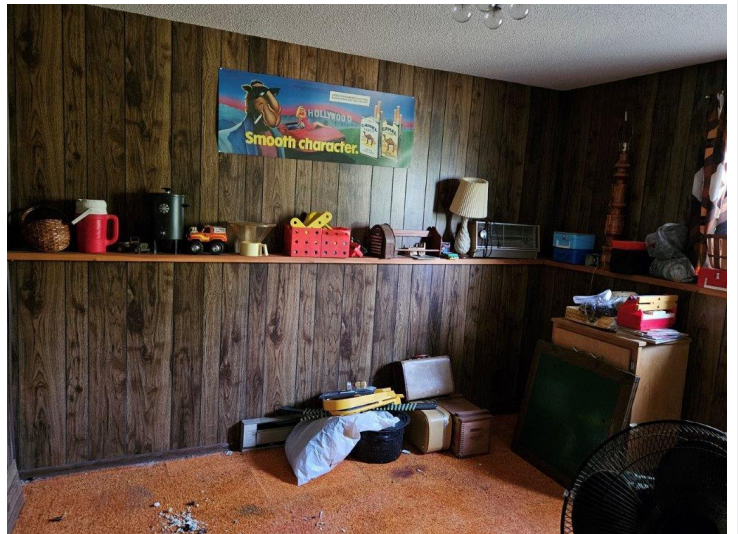
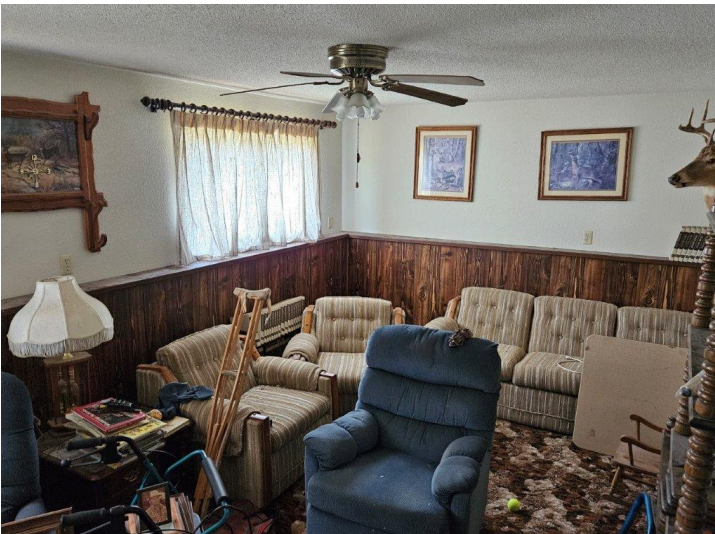
\$172,000
MLS 6421521 Residential
18105 Golf View Lane
Bagley MN 56621



website: www.AffinityRealEstate.com | email: info@affinityrealestate.com | office: 218-237-3333 | fax: 218-237-3377

Affinity
REAL ESTATE INC

\$172,000
MLS 6421521 Residential
18105 Golf View Lane
Bagley MN 56621



website: www.AffinityRealEstate.com | email: info@affinityrealestate.com | office: 218-237-3333 | fax: 218-237-3377

Affinity
REAL ESTATE INC

\$172,000
MLS 6421521 Residential
18105 Golf View Lane
Bagley MN 56621



website: www.AffinityRealEstate.com | email: info@affinityrealestate.com | office: 218-237-3333 | fax: 218-237-3377



\$172,000
 MLS 6421521 Residential
 18105 Golf View Lane
 Bagley MN 56621