



MLS 6422508 Lake Home

\$420,000

1,512 sq ft
3 bedrooms
1 baths

33473 620th Avenue
Wadena MN 56482

Waterfront: Oak Creek

Status: Active

Description:

LET US PAY \$1,500 TOWARD YOUR NEW FLOOR COVERING... This property adjoins BLACKS GROVE. Cross Country Ski Trails, hiking, enjoy OAK CREEK as it meanders through the entire length of your property. Yes the home needs redecorating, but you wont find a property to compare. SHE SHED/MAN CAVE is unbelievable.

Additional Details:

Year Built	1959
Lot Acres	25.3
Lot Dimensions	974x1134x974x1134
Garage Stalls	2
School District	2155
Taxes	\$1,972
Taxes with Assessments	\$2,052
Tax Year	2023

Additional Features:

Fuel: Oil **Heat:** Forced Air

Driving Directions:

From the intersection of US Hwy 10 and 71 in Wadena, South on US Hwy71 4 blocks to State Hwy 29; West on Hwy 29 for approximately 2.5 miles to 620 th Ave; North on 620th approximately 1/2 mile to Subject on your left.



Listed By:
The Gores Company

Affinity Real Estate Inc. participates in the Regional Multiple Listing Service of Minnesota, Inc Broker Reciprocity (sm) program, allowing us to display other broker's listings on our website. All properties are subject to prior sale, change or withdrawal.



Call Affinity Real Estate

218-237-3333

info@affinityrealestate.com

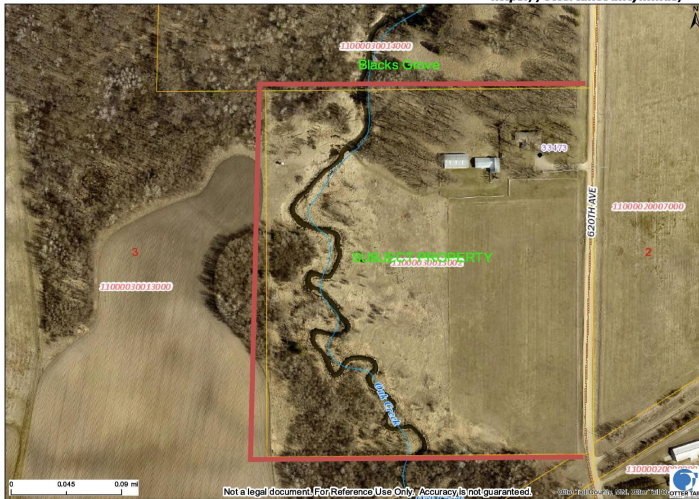


Affinity Real Estate - 600 Park Avenue South - Park Rapids MN 56470



SUBJECT PROPERTY

<https://ottertailcountymn.us/>



website: www.AffinityRealEstate.com | email: info@affinityrealestate.com | office: 218-237-3333 | fax:218-237-3377



\$420,000
MLS 6422508 Lake Home
33473 620th Avenue
Wadena MN 56482



website: www.AffinityRealEstate.com | email: info@affinityrealestate.com | office: 218-237-3333 | fax:218-237-3377

Affinity
REAL ESTATE INC

\$420,000
MLS 6422508 Lake Home
33473 620th Avenue
Wadena MN 56482



website: www.AffinityRealEstate.com | email: info@affinityrealestate.com | office: 218-237-3333 | fax:218-237-3377

Affinity
REAL ESTATE INC

\$420,000
MLS 6422508 Lake Home
33473 620th Avenue
Wadena MN 56482



website: www.AffinityRealEstate.com | email: info@affinityrealestate.com | office: 218-237-3333 | fax:218-237-3377



\$420,000
MLS 6422508 Lake Home
33473 620th Avenue
Wadena MN 56482