



MLS 6422717 Lake Home

**\$3,495,000**

4,769 sq ft  
4 bedrooms  
4 baths

10323 Red Pine Trail  
Pine River MN 56474

Waterfront: Big Trout

Status: Hold

**Description:**

Nestled amongst the pines of the west shore of Big Trout Lake, this hand-scribed log home sits on 142ft of some of the best sand you can find on the Whitefish Chain and the 1.21 acres offer the perfect privacy for this stunning log home. Inside you will find 4 bedrooms, 4 bathrooms, and views that will take your breath away. This property has been completely updated and decorated with the help of an interior designer and have features include extensively landscaped grounds that includes a fire features and new sound system, custom black walnut wet bar and TV center, brand new bathrooms, refinished floors, new roof, copper gutters, JennAir appliances and so much more. This home perfectly ties together the rustic cabin feel, with every modern luxury. Boasting 4,739sqft, there is definitely enough room for your friends and family too. The attached garage, boat house and shed offer plenty of storage for all of your toys. You do not want to miss this one-of-a-kind legacy property!

**Additional Details:**

Year Built	1998
Lot Acres	1.21
Lot Dimensions	142 x 325 x 142 x 222 x 161
Garage Stalls	3
School District	2174
Taxes	\$12,183
Taxes with Assessments	\$12,208
Tax Year	2023

**Additional Features:**

**Fuel:** Natural Gas **Heat:** Forced Air, Radiant Floor, Zoned

**Driving Directions:**

From the intersection of County Rd 66 and County Rd 1 in Crosslake take County Rd 1 West, go 3 miles, turn left onto County Rd 134 then continue onto Father Foley Rd, go 2.1 miles, turn left onto Trout Lake Drive, turn left onto Red Pine Trail and go left at the Y to the property addressed 10323.



Listed By:  
Larson Group Real Estate/Kelle

Affinity Real Estate Inc. participates in the Regional Multiple Listing Service of Minnesota, Inc Broker Reciprocity (sm) program, allowing us to display other broker's listings on our website. All properties are subject to prior sale, change or withdrawal.



**Call Affinity Real Estate**

**218-237-3333**

**info@affinityrealestate.com**



**Affinity Real Estate - 600 Park Avenue South - Park Rapids MN 56470**





website: [www.AffinityRealEstate.com](http://www.AffinityRealEstate.com) | email: [info@affinityrealestate.com](mailto:info@affinityrealestate.com) | office: 218-237-3333 | fax:218-237-3377



**\$3,495,000**  
MLS 6422717 Lake Home  
10323 Red Pine Trail  
Pine River MN 56474





website: [www.AffinityRealEstate.com](http://www.AffinityRealEstate.com) | email: [info@affinityrealestate.com](mailto:info@affinityrealestate.com) | office: 218-237-3333 | fax:218-237-3377

**Affinity**  
REAL ESTATE INC

**\$3,495,000**  
MLS 6422717 Lake Home  
10323 Red Pine Trail  
Pine River MN 56474





website: [www.AffinityRealEstate.com](http://www.AffinityRealEstate.com) | email: [info@affinityrealestate.com](mailto:info@affinityrealestate.com) | office: 218-237-3333 | fax: 218-237-3377

**Affinity**  
REAL ESTATE INC

**\$3,495,000**  
MLS 6422717 Lake Home  
10323 Red Pine Trail  
Pine River MN 56474





website: [www.AffinityRealEstate.com](http://www.AffinityRealEstate.com) | email: [info@affinityrealestate.com](mailto:info@affinityrealestate.com) | office: 218-237-3333 | fax:218-237-3377

**Affinity**  
REAL ESTATE INC

**\$3,495,000**  
MLS 6422717 Lake Home  
10323 Red Pine Trail  
Pine River MN 56474





website: [www.AffinityRealEstate.com](http://www.AffinityRealEstate.com) | email: [info@affinityrealestate.com](mailto:info@affinityrealestate.com) | office: 218-237-3333 | fax:218-237-3377

**Affinity**  
REAL ESTATE INC

**\$3,495,000**  
MLS 6422717 Lake Home  
10323 Red Pine Trail  
Pine River MN 56474





website: [www.AffinityRealEstate.com](http://www.AffinityRealEstate.com) | email: [info@affinityrealestate.com](mailto:info@affinityrealestate.com) | office: 218-237-3333 | fax: 218-237-3377

**Affinity**  
REAL ESTATE INC

**\$3,495,000**  
MLS 6422717 Lake Home  
10323 Red Pine Trail  
Pine River MN 56474





website: [www.AffinityRealEstate.com](http://www.AffinityRealEstate.com) | email: [info@affinityrealestate.com](mailto:info@affinityrealestate.com) | office: 218-237-3333 | fax: 218-237-3377

**Affinity**  
REAL ESTATE INC

**\$3,495,000**  
MLS 6422717 Lake Home  
10323 Red Pine Trail  
Pine River MN 56474



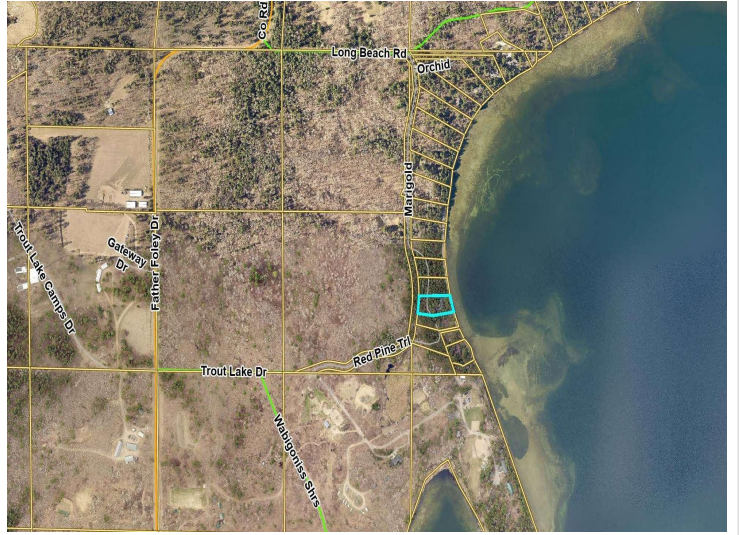


website: [www.AffinityRealEstate.com](http://www.AffinityRealEstate.com) | email: [info@affinityrealestate.com](mailto:info@affinityrealestate.com) | office: 218-237-3333 | fax:218-237-3377



**\$3,495,000**  
MLS 6422717 Lake Home  
10323 Red Pine Trail  
Pine River MN 56474





website: [www.AffinityRealEstate.com](http://www.AffinityRealEstate.com) | email: [info@affinityrealestate.com](mailto:info@affinityrealestate.com) | office: 218-237-3333 | fax: 218-237-3377



**\$3,495,000**  
MLS 6422717 Lake Home  
10323 Red Pine Trail  
Pine River MN 56474