



MLS 6422787 Lake Land

\$169,900

Description:

Enjoy the serenity of Benedict Lake on this nicely wooded 1.75 acres and level elevation to 325 ft of natural shoreline and situated on a dead-end road for lots of privacy. If you're a fishing enthusiast, the access to Leech Lake through the adjoining Kabekona River offers great fishing opportunities. Currently there are 2 small storage sheds on the property and is ready for your ideas whether you're interested in camping, RVing, or building a cozy cabin, it appears to accommodate your preferences.. The Paul Bunyan Trail for your walking, hiking, biking, and snowmobile is right at your doorstep.

Additional Details:

Lot Acres	1.75
Lot Dimensions	325x232x365x232
School District	113
Taxes	\$876
Taxes with Assessments	\$1,076
Tax Year	2023

Additional Features:

Driving Directions:

From Walker, north on 371 for 2.4 miles, turn left onto Co Rd 38 for 3.6 miles, turn left onto Lilly Pad Landing, curves right 2nd driveway on the left.



Listed By:
Bill Hansen Realty/Walker

Affinity Real Estate Inc. participates in the Regional Multiple Listing Service of Minnesota, Inc Broker Reciprocity (sm) program, allowing us to display other broker's listings on our website. All properties are subject to prior sale, change or withdrawal.



Call Affinity Real Estate

218-237-3333

info@affinityrealestate.com



Affinity Real Estate - 600 Park Avenue South - Park Rapids MN 56470



website: www.AffinityRealEstate.com | email: info@affinityrealestate.com | office: 218-237-3333 | fax: 218-237-3377



\$169,900
 MLS 6422787 Lake Land
 TBD Lilypad Landing Drive
 Walker MN 56484



website: www.AffinityRealEstate.com | email: info@affinityrealestate.com | office: 218-237-3333 | fax: 218-237-3377



\$169,900

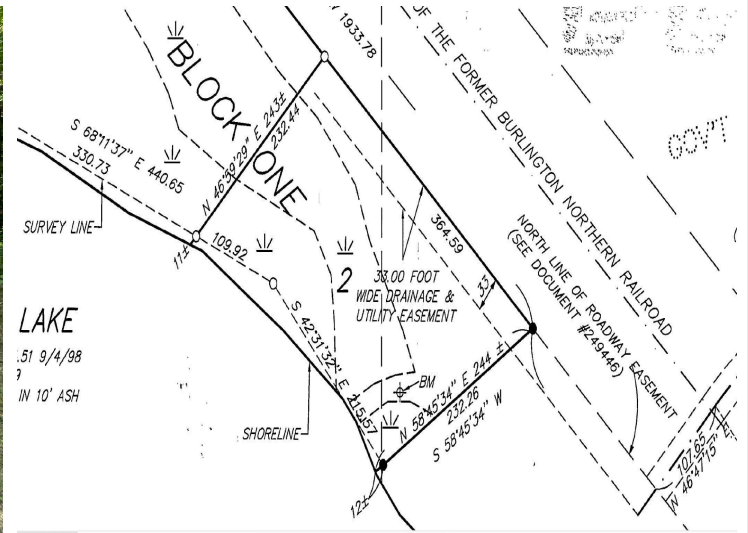
MLS 6422787 Lake Land
TBD Lilypad Landing Drive
Walker MN 56484



website: www.AffinityRealEstate.com | email: info@affinityrealestate.com | office: 218-237-3333 | fax: 218-237-3377



\$169,900
 MLS 6422787 Lake Land
 TBD Lilypad Landing Drive
 Walker MN 56484



website: www.AffinityRealEstate.com | email: info@affinityrealestate.com | office: 218-237-3333 | fax: 218-237-3377



\$169,900
 MLS 6422787 Lake Land
 TBD Lilypad Landing Drive
 Walker MN 56484