



MLS 6423234 Land

\$119,900

8.58 Acres
Raw Land

TBD Hwy 71
Bemidji MN 56601

Status: Active

Description:

High visibility is what you will find on this 8+ acre lot located just south of Bemidji on the corner of Hwy 71 and N Plantagenet Rd (Beltrami County southern border line). These two roads have excellent ingress and egress for all your needs and with traffic counts on Hwy 71 over 9,000 vehicles per day, the possibilities are endless, with township approval.

Additional Details:

Lot Acres	8.58
Lot Dimensions	580x500x580x600
School District	31
Taxes	\$572
Taxes with Assessments	\$572
Tax Year	2023

Additional Features:

Driving Directions:

From Bemidji, south on Hwy 2 or Hwy 71. At intersection of Hwy 2 and Hwy 71, go south on Hwy 71 for 1.4 miles. Property will be on your right (west side of Hwy 71 and north side of N Plantagenet Rd). The land is just south of Horace-May Elementary School.



Listed By:
218 Real Estate

Affinity Real Estate Inc. participates in the Regional Multiple Listing Service of Minnesota, Inc Broker Reciprocity (sm) program, allowing us to display other broker's listings on our website. All properties are subject to prior sale, change or withdrawal.



Call Affinity Real Estate

218-237-3333

info@affinityrealestate.com



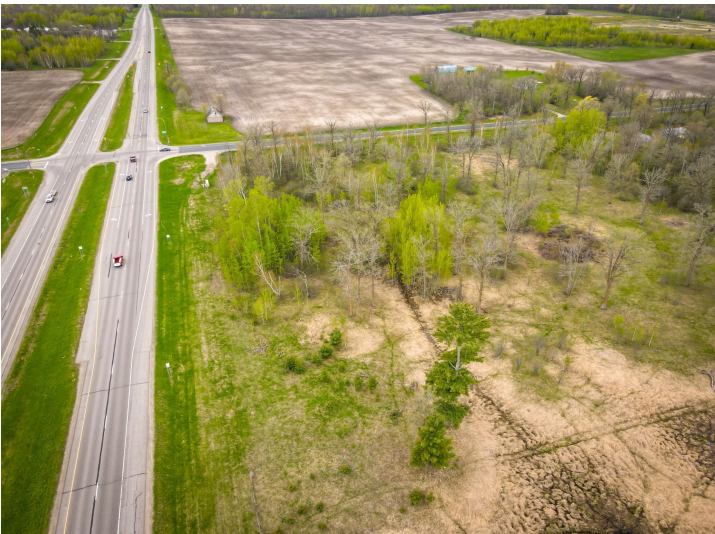
Affinity Real Estate - 600 Park Avenue South - Park Rapids MN 56470



website: www.AffinityRealEstate.com | email: info@affinityrealestate.com | office: 218-237-3333 | fax: 218-237-3377



\$119,900
 MLS 6423234 Land
 TBD Hwy 71
 Bemidji MN 56601



website: www.AffinityRealEstate.com | email: info@affinityrealestate.com | office: 218-237-3333 | fax: 218-237-3377



\$119,900
 MLS 6423234 Land
 TBD Hwy 71
 Bemidji MN 56601