



MLS 6423751 Land

**\$169,000**

14 Acres  
Raw Land

46567 County Highway 26  
Detroit Lakes MN 56501

Status: Active

**Description:**

Motivated Seller! Turn your dream rural home into a reality with this large, wooded lot near Shell Lake! As you arrive you are greeted by a large (approx 12,000 sq ft.) clearing with dirt work, gravel and grading, as well as 15, 4-foot x 16-inch rebar reinforced 5000psi concrete pillars, READY TO BUILD ON. A shed in the front of the property houses the massive shipping container forklift. As you move through the heavily wooded lot you come to another clearing near the middle of the property that boasts 2 additional storage buildings, a home with a concrete block basement and another structure that was used for sleeping and art studio (not habitable), and plenty of open space. The road to the property is paved and maintained very well in the winter and allows easy access for vehicles of all types. Don't miss out on this one-of-a-kind opportunity Seller is a licensed Realtor in the state of North Dakota.

**Additional Details:**

Lot Acres	14
Lot Dimensions	irregular
School District	23
Taxes	\$906
Taxes with Assessments	\$906
Tax Year	2023

**Additional Features:**

**Driving Directions:**

Turn Right on MN-34 E, Turn left onto Co Hwy 37, Turn right onto 270 St, Property is on the right.



Listed By:  
eXp Realty - Fargo 3247

Affinity Real Estate Inc. participates in the Regional Multiple Listing Service of Minnesota, Inc Broker Reciprocity (sm) program, allowing us to display other broker's listings on our website. All properties are subject to prior sale, change or withdrawal.



Call Affinity Real Estate

**218-237-3333**

[info@affinityrealestate.com](mailto:info@affinityrealestate.com)



Affinity Real Estate - 600 Park Avenue South - Park Rapids MN 56470





website: [www.AffinityRealEstate.com](http://www.AffinityRealEstate.com) | email: [info@affinityrealestate.com](mailto:info@affinityrealestate.com) | office: 218-237-3333 | fax:218-237-3377

**Affinity**  
REAL ESTATE INC

**\$169,000**  
MLS 6423751 Land  
46567 County Highway 26  
Detroit Lakes MN 56501



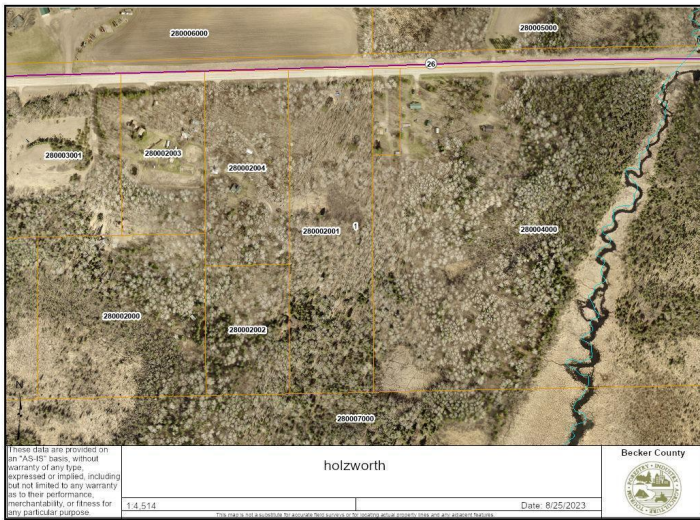


website: [www.AffinityRealEstate.com](http://www.AffinityRealEstate.com) | email: [info@affinityrealestate.com](mailto:info@affinityrealestate.com) | office: 218-237-3333 | fax:218-237-3377



**\$169,000**  
MLS 6423751 Land  
46567 County Highway 26  
Detroit Lakes MN 56501





website: [www.AffinityRealEstate.com](http://www.AffinityRealEstate.com) | email: [info@affinityrealestate.com](mailto:info@affinityrealestate.com) | office: 218-237-3333 | fax:218-237-3377



**\$169,000**  
 MLS 6423751 Land  
 46567 County Highway 26  
 Detroit Lakes MN 56501