



MLS 6423897 Lake Home

\$469,000

1,476 sq ft
3 bedrooms
2 baths

26659 State Highway 371
Nisswa MN 56468

Waterfront: Edna

Status: Coming Soon

Description:

Two PID#'s. Survey in Supplements. Not currently subdividable. 219 or 222 of lake frontage, year round easy access, updates include new windows, new electrical entrance, new arc-fault circuit breakers, new furnace, new central A/C, new water heater, new water softener, new appliances on main level, deck rebuilt, full BA remodeled, kitchen remodel, laundry room remodel, wood-burning fireplace converted to gas-burning, lakeside landscaping redone, over-sized garage w/ chimney from former garage wood-stove remains, stairway and a sloped path for getting to the lake, private lower level has kitchenette, 3/4 BA, 2 from walkouts plus private LL exterior side entry, extra parking. Ca

Additional Details:

Year Built	1950
Lot Acres	0.54
Lot Dimensions	219x121x222x78
Garage Stalls	2
School District	181
Taxes	\$2,682
Taxes with Assessments	\$2,682
Tax Year	2024

Additional Features:

Basement: Block, Daylight/Lookout Windows, Egress Window(s), Finished, Full, Walkout **Fuel:** Natural Gas **Garage:** 2 **Heat:** Forced Air **Sewer:** Septic System Compliant - Yes **Water:** Well **Air Conditioning:** Central Air

Driving Directions:

From Nisswa on #371, north to u-turn at Edna Lake Rd to address. First driveway on right. Real estate sign at driveway entrance.



Listed By:
Blue House Realty LLC

Affinity Real Estate Inc. participates in the Regional Multiple Listing Service of Minnesota, Inc Broker Reciprocity (sm) program, allowing us to display other broker's listings on our website. All properties are subject to prior sale, change or withdrawal.



Call Affinity Real Estate

218-237-3333

info@affinityrealestate.com



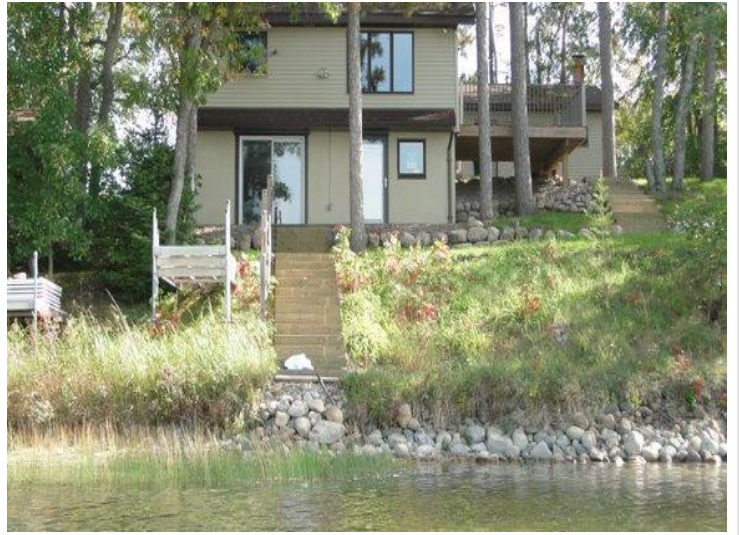
Affinity Real Estate - 600 Park Avenue South - Park Rapids MN 56470



website: www.AffinityRealEstate.com | email: info@affinityrealestate.com | office: 218-237-3333 | fax:218-237-3377

Affinity
REAL ESTATE INC

\$469,000
MLS 6423897 Lake Home
26659 State Highway 371
Nisswa MN 56468



website: www.AffinityRealEstate.com | email: info@affinityrealestate.com | office: 218-237-3333 | fax:218-237-3377

Affinity
REAL ESTATE INC

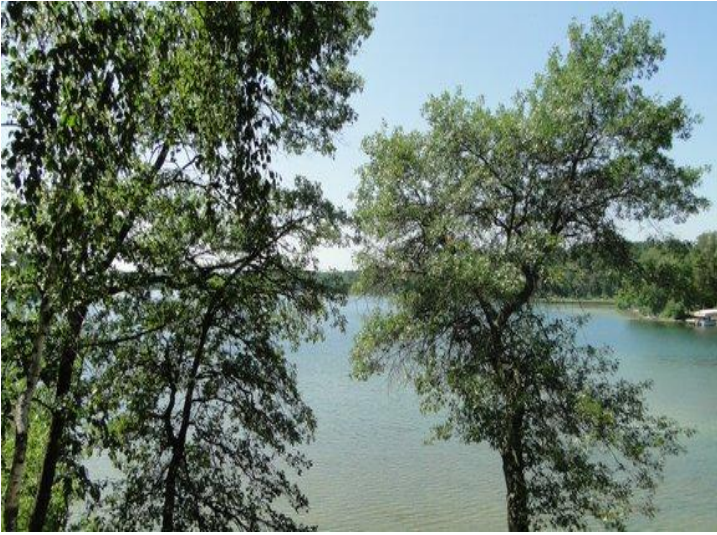
\$469,000
MLS 6423897 Lake Home
26659 State Highway 371
Nisswa MN 56468



website: www.AffinityRealEstate.com | email: info@affinityrealestate.com | office: 218-237-3333 | fax:218-237-3377

Affinity
REAL ESTATE INC

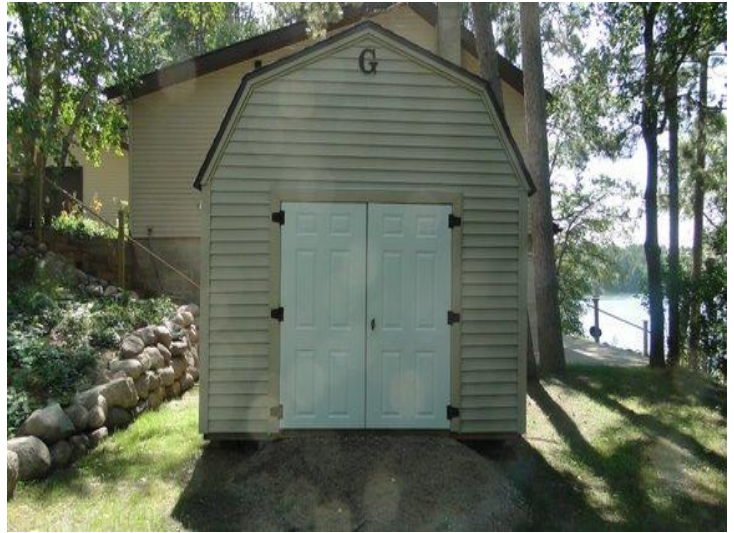
\$469,000
MLS 6423897 Lake Home
26659 State Highway 371
Nisswa MN 56468



website: www.AffinityRealEstate.com | email: info@affinityrealestate.com | office: 218-237-3333 | fax:218-237-3377

Affinity
REAL ESTATE INC

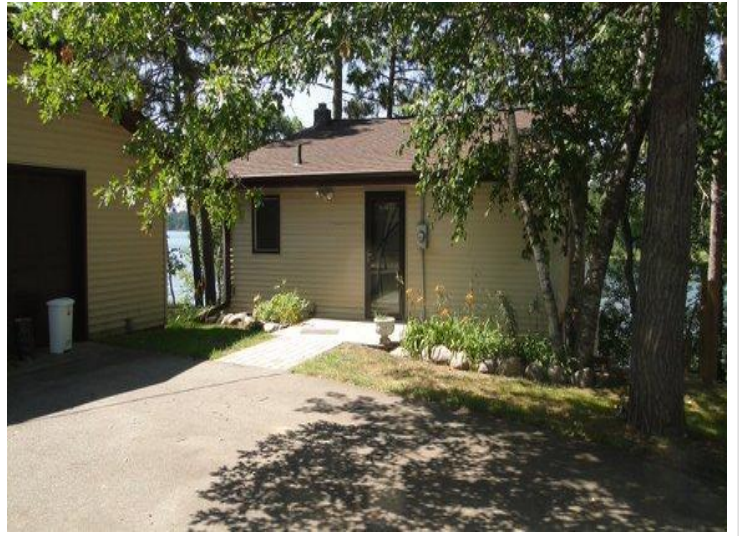
\$469,000
MLS 6423897 Lake Home
26659 State Highway 371
Nisswa MN 56468



website: www.AffinityRealEstate.com | email: info@affinityrealestate.com | office: 218-237-3333 | fax:218-237-3377



\$469,000
MLS 6423897 Lake Home
26659 State Highway 371
Nisswa MN 56468



website: www.AffinityRealEstate.com | email: info@affinityrealestate.com | office: 218-237-3333 | fax:218-237-3377



\$469,000
MLS 6423897 Lake Home
26659 State Highway 371
Nisswa MN 56468



website: www.AffinityRealEstate.com | email: info@affinityrealestate.com | office: 218-237-3333 | fax:218-237-3377



\$469,000
MLS 6423897 Lake Home
26659 State Highway 371
Nisswa MN 56468



website: www.AffinityRealEstate.com | email: info@affinityrealestate.com | office: 218-237-3333 | fax:218-237-3377



\$469,000
MLS 6423897 Lake Home
26659 State Highway 371
Nisswa MN 56468



website: www.AffinityRealEstate.com | email: info@affinityrealestate.com | office: 218-237-3333 | fax:218-237-3377



\$469,000
MLS 6423897 Lake Home
26659 State Highway 371
Nisswa MN 56468



website: www.AffinityRealEstate.com | email: info@affinityrealestate.com | office: 218-237-3333 | fax:218-237-3377



\$469,000
MLS 6423897 Lake Home
26659 State Highway 371
Nisswa MN 56468



website: www.AffinityRealEstate.com | email: info@affinityrealestate.com | office: 218-237-3333 | fax:218-237-3377

Affinity
REAL ESTATE INC

\$469,000
MLS 6423897 Lake Home
26659 State Highway 371
Nisswa MN 56468



website: www.AffinityRealEstate.com | email: info@affinityrealestate.com | office: 218-237-3333 | fax:218-237-3377



\$469,000
MLS 6423897 Lake Home
26659 State Highway 371
Nisswa MN 56468



website: www.AffinityRealEstate.com | email: info@affinityrealestate.com | office: 218-237-3333 | fax:218-237-3377



\$469,000
MLS 6423897 Lake Home
26659 State Highway 371
Nisswa MN 56468



website: www.AffinityRealEstate.com | email: info@affinityrealestate.com | office: 218-237-3333 | fax:218-237-3377



\$469,000
MLS 6423897 Lake Home
26659 State Highway 371
Nisswa MN 56468



website: www.AffinityRealEstate.com | email: info@affinityrealestate.com | office: 218-237-3333 | fax:218-237-3377



\$469,000
MLS 6423897 Lake Home
26659 State Highway 371
Nisswa MN 56468



website: www.AffinityRealEstate.com | email: info@affinityrealestate.com | office: 218-237-3333 | fax:218-237-3377



\$469,000
MLS 6423897 Lake Home
26659 State Highway 371
Nisswa MN 56468



website: www.AffinityRealEstate.com | email: info@affinityrealestate.com | office: 218-237-3333 | fax:218-237-3377



\$469,000
MLS 6423897 Lake Home
26659 State Highway 371
Nisswa MN 56468



website: www.AffinityRealEstate.com | email: info@affinityrealestate.com | office: 218-237-3333 | fax:218-237-3377



\$469,000
MLS 6423897 Lake Home
26659 State Highway 371
Nisswa MN 56468



website: www.AffinityRealEstate.com | email: info@affinityrealestate.com | office: 218-237-3333 | fax:218-237-3377



\$469,000
MLS 6423897 Lake Home
26659 State Highway 371
Nisswa MN 56468