



MLS 6425559 Land

**\$140,000**

4.45 Acres  
Raw Land

TBD Edna Lake Rd  
Nisswa MN 56468

Status: Active



**Description:**

Look no further for your building spot in the heart of the Brainerd Lakes area. 4.45 acres with endless possibilities. Surrounded by lakes and close to St Hwy 371.....come and walk this property and see what it has to offer.

**Additional Details:**

Lot Acres	4.45
Lot Dimensions	459x417x770x288x340x190
School District	181
Taxes	\$428
Taxes with Assessments	\$428
Tax Year	2023

**Additional Features:**

**Driving Directions:**

From State Hwy 371 North of Nisswa, go West on Edna Lake Rd to property on the North.



Listed By:  
NextHome Horizons

Affinity Real Estate Inc. participates in the Regional Multiple Listing Service of Minnesota, Inc Broker Reciprocity (sm) program, allowing us to display other broker's listings on our website. All properties are subject to prior sale, change or withdrawal.



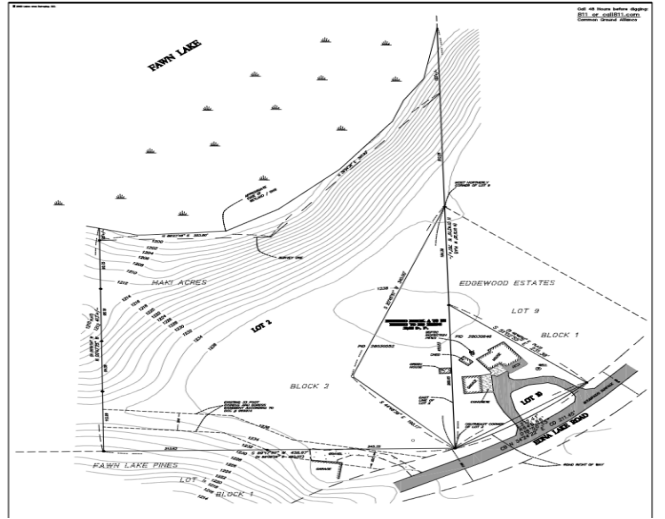
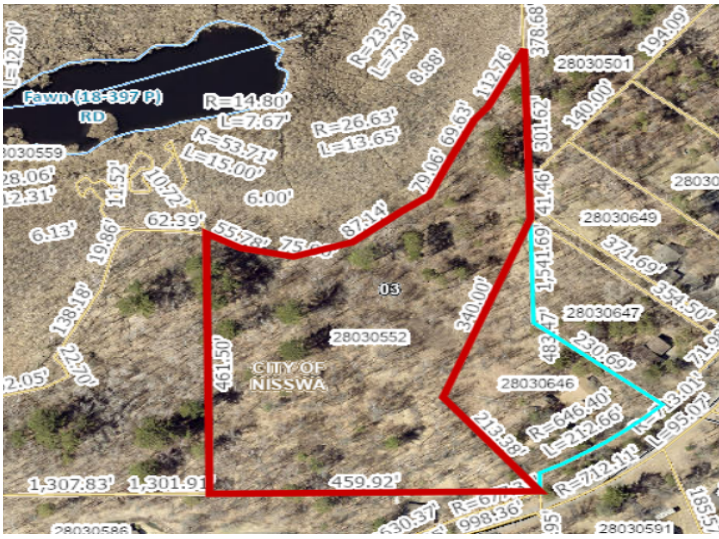
Call Affinity Real Estate

**218-237-3333**

[info@affinityrealestate.com](mailto:info@affinityrealestate.com)



Affinity Real Estate - 600 Park Avenue South - Park Rapids MN 56470



website: [www.AffinityRealEstate.com](http://www.AffinityRealEstate.com) | email: [info@affinityrealestate.com](mailto:info@affinityrealestate.com) | office: 218-237-3333 | fax: 218-237-3377

**Affinity**  
REAL ESTATE INC

**\$140,000**  
MLS 6425559 Land  
TBD Edna Lake Rd  
Nisswa MN 56468



website: [www.AffinityRealEstate.com](http://www.AffinityRealEstate.com) | email: [info@affinityrealestate.com](mailto:info@affinityrealestate.com) | office: 218-237-3333 | fax:218-237-3377



**\$140,000**  
MLS 6425559 Land  
TBD Edna Lake Rd  
Nisswa MN 56468