



MLS 6426562 Residential

**\$399,900**

2,052 sq ft  
3 bedrooms  
2 baths

18600 Natures Edge Drive  
Lake George MN 56458

Status: Active

**Description:**

This gorgeous property in Northern Minnesota was built in 2020 and is move in ready. The home features main level living with a walkout basement, 2 bedrooms up and 1 down plus a living area on each level. The septic is compliant for 4 bedrooms and a 4th bedroom could easily be added in the basement. The outdoor setting, which includes a beautiful deck, firepit and stamped concrete patio, is perfect for enjoying all your outdoor activities. This property is surrounded by lakes and trails so you can enjoy all that Northern MN has to offer. It would make for a great family home, vacation getaway or an investment property as a VRBO. This is one you will surely want to see in person. Schedule your showing to see it for yourself!

**Additional Details:**

Year Built	2020
Lot Acres	2.74
Lot Dimensions	Irregular
Garage Stalls	2
School District	309
Taxes	\$1,356
Taxes with Assessments	\$1,556
Tax Year	2023

**Additional Features:**

**Basement:** Walkout **Fuel:** Propane, Wood **Garage:** 2 **Heat:** Forced Air **Sewer:** Septic System Compliant - Yes, Tank with Drainage Field  
**Water:** Drilled, Well **Air Conditioning:** Central Air

**Driving Directions:**

From Lake George head south on County 4 for 1.5 miles and turn east on Natures Edge. Go around corner and property will be on the left.



Listed By:  
Keller Williams Realty Professionals

Affinity Real Estate Inc. participates in the Regional Multiple Listing Service of Minnesota, Inc Broker Reciprocity (sm) program, allowing us to display other broker's listings on our website. All properties are subject to prior sale, change or withdrawal.



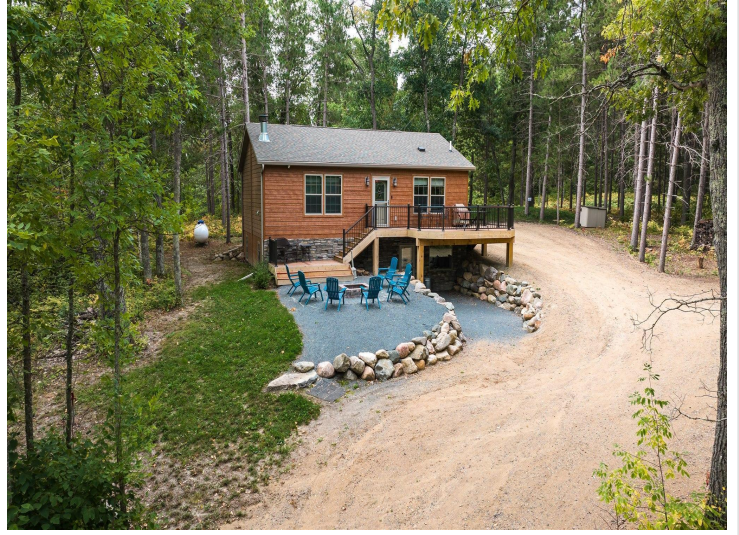
**Call Affinity Real Estate**

**218-237-3333**

**info@affinityrealestate.com**



**Affinity Real Estate - 600 Park Avenue South - Park Rapids MN 56470**



website: [www.AffinityRealEstate.com](http://www.AffinityRealEstate.com) | email: [info@affinityrealestate.com](mailto:info@affinityrealestate.com) | office: 218-237-3333 | fax: 218-237-3377

**Affinity**  
REAL ESTATE INC

**\$399,900**  
MLS 6426562 Residential  
18600 Natures Edge Drive  
Lake George MN 56458



website: [www.AffinityRealEstate.com](http://www.AffinityRealEstate.com) | email: [info@affinityrealestate.com](mailto:info@affinityrealestate.com) | office: 218-237-3333 | fax:218-237-3377



**\$399,900**  
MLS 6426562 Residential  
18600 Natures Edge Drive  
Lake George MN 56458



website: [www.AffinityRealEstate.com](http://www.AffinityRealEstate.com) | email: [info@affinityrealestate.com](mailto:info@affinityrealestate.com) | office: 218-237-3333 | fax: 218-237-3377

**Affinity**  
REAL ESTATE INC

**\$399,900**  
MLS 6426562 Residential  
18600 Natures Edge Drive  
Lake George MN 56458



website: [www.AffinityRealEstate.com](http://www.AffinityRealEstate.com) | email: [info@affinityrealestate.com](mailto:info@affinityrealestate.com) | office: 218-237-3333 | fax:218-237-3377

**Affinity**  
REAL ESTATE INC

**\$399,900**  
MLS 6426562 Residential  
18600 Natures Edge Drive  
Lake George MN 56458



website: [www.AffinityRealEstate.com](http://www.AffinityRealEstate.com) | email: [info@affinityrealestate.com](mailto:info@affinityrealestate.com) | office: 218-237-3333 | fax: 218-237-3377

**Affinity**  
REAL ESTATE INC

**\$399,900**  
MLS 6426562 Residential  
18600 Natures Edge Drive  
Lake George MN 56458



website: [www.AffinityRealEstate.com](http://www.AffinityRealEstate.com) | email: [info@affinityrealestate.com](mailto:info@affinityrealestate.com) | office: 218-237-3333 | fax:218-237-3377



**\$399,900**  
MLS 6426562 Residential  
18600 Natures Edge Drive  
Lake George MN 56458

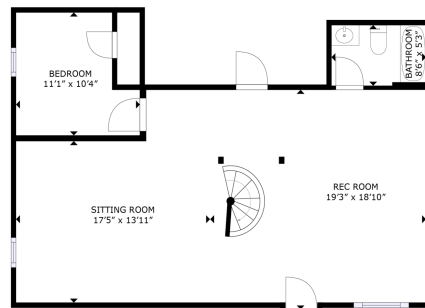
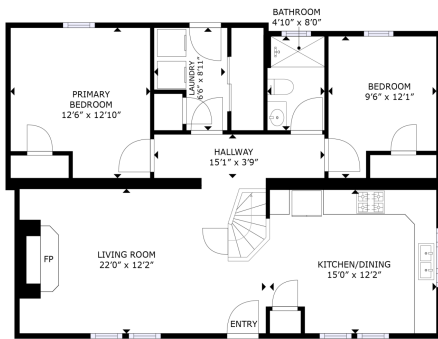


website: [www.AffinityRealEstate.com](http://www.AffinityRealEstate.com) | email: [info@affinityrealestate.com](mailto:info@affinityrealestate.com) | office: 218-237-3333 | fax:218-237-3377

**Affinity**  
REAL ESTATE INC

**\$399,900**  
MLS 6426562 Residential  
18600 Natures Edge Drive  
Lake George MN 56458





1ST FLOOR

GROSS INTERNAL AREA  
BASEMENT: 202 SQ. FT. 1ST FLOOR: 483 SQ. FT.  
TOTAL: 1,775 SQ. FT.  
SIZES AND DIMENSIONS ARE APPROXIMATE, ACTUAL MAY VARY.



BASEMENT

GROSS INTERNAL AREA  
BASEMENT: 202 SQ. FT. 1ST FLOOR: 483 SQ. FT.  
TOTAL: 1,775 SQ. FT.  
SIZES AND DIMENSIONS ARE APPROXIMATE, ACTUAL MAY VARY.



website: [www.AffinityRealEstate.com](http://www.AffinityRealEstate.com) | email: [info@affinityrealestate.com](mailto:info@affinityrealestate.com) | office: 218-237-3333 | fax: 218-237-3377



**\$399,900**  
MLS 6426562 Residential  
18600 Natures Edge Drive  
Lake George MN 56458