



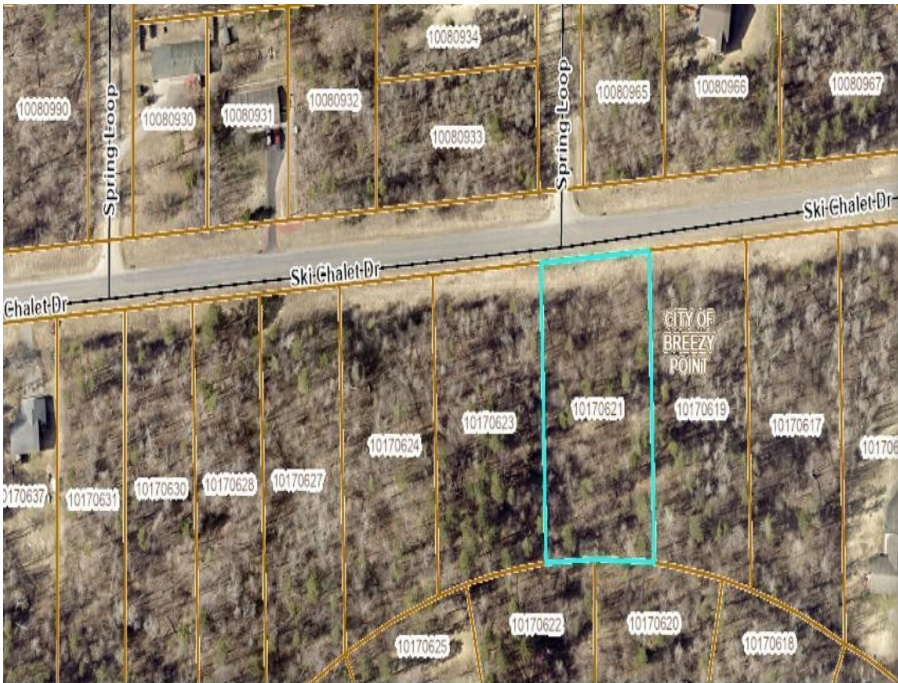
MLS 6428127 Land

**\$23,499**

1.04 Acres  
Raw Land

TBD Ski Chalet Drive  
Breezy Point MN 56472

Status: Active



**Description:**

Fantastic opportunity to acquire a slightly over one-acre lot nestled in the charming Breezy Point community, where you can turn your dream home into a reality. Located within the Pequot Lakes School District. Just a short drive away from the Breezy Point Gates, this location is a gateway to the best that the area has to offer. From dining options to world-class golf courses and healthcare system, you'll have it all within reach. Plus, the beautiful Pelican Lake with public boat access and the Paul Bunyan Tail nearby ensure endless recreational possibilities for water enthusiasts. Don't let this incredible opportunity slip through your fingers. Act now and make your dream of owning a piece of Breezy Point a reality!

**Additional Details:**

Lot Acres	1.04
Lot Dimensions	159x291x280x159
School District	186
Taxes	\$78
Taxes with Assessments	\$78
Tax Year	2023

**Additional Features:**

**Driving Directions:**

Starting at Pelican Square, Head toward Bluebird Ln. Go for 0.1 mi. Turn right onto Bluebird Ln. Go for 0.2 mi. Turn left onto County Road 11 (CR-11). Go for 1.3 mi. Turn right onto Ranchette Dr. Go for 0.1 mi. Turn right onto Ski Chalet Dr. Go for 0.2 mi. Lot across the street from Spring Loop .2mi



Listed By:  
Coldwell Banker Realty

Affinity Real Estate Inc. participates in the Regional Multiple Listing Service of Minnesota, Inc Broker Reciprocity (sm) program, allowing us to display other broker's listings on our website. All properties are subject to prior sale, change or withdrawal.



Call Affinity Real Estate

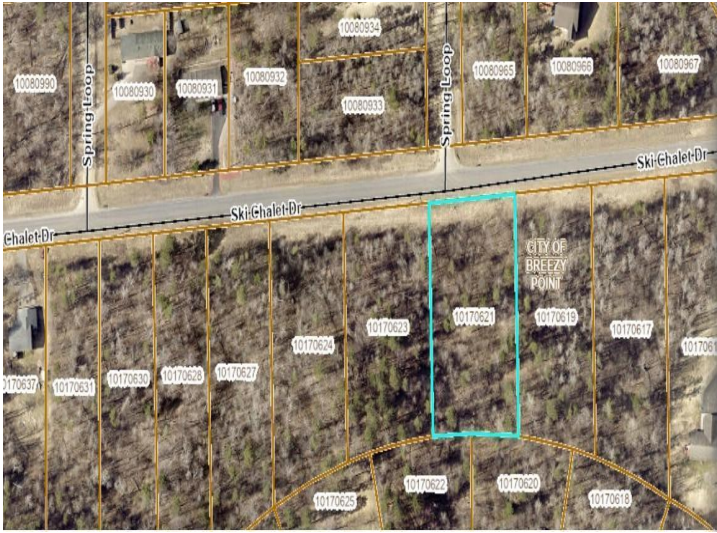
**218-237-3333**

[info@affinityrealestate.com](mailto:info@affinityrealestate.com)



Affinity Real Estate - 600 Park Avenue South - Park Rapids MN 56470





website: [www.AffinityRealEstate.com](http://www.AffinityRealEstate.com) | email: [info@affinityrealestate.com](mailto:info@affinityrealestate.com) | office: 218-237-3333 | fax:218-237-3377



**\$23,499**  
MLS 6428127 Land  
TBD Ski Chalet Drive  
Breezy Point MN 56472