



MLS 6432941 Residential

\$189,900

1 sq ft
0 bedrooms
0 baths

48751 153rd Avenue
Verndale MN 56481

Status: Active

Description:

Amazing opportunity to finish your family home for your specific needs! Wide open for your design in this rambler walkout layout! Basement plumbed for possible 2nd kitchen and bath. Basement has 4 egress windows for extra bedrooms and 8' ceiling height. Plenty of space with 1900+ square feet on each floor! Perfectly situated on gently rolling wooded 3.60 acres! New mound septic system compliant for 6 bedrooms and new drilled well, both pulled into home, two car garage with concrete floor 28x30. Set up a showing today.

Additional Details:

Year Built	2014
Lot Acres	3.61
Lot Dimensions	608x164x578x380
Garage Stalls	2
School District	786
Taxes	\$892
Taxes with Assessments	\$892
Tax Year	2024

Additional Features:

Fuel: Natural Gas **Heat:** None

Driving Directions:

From HWY 10 & CO RD 23 in Verndale. CO RD 23 South 4.5mi to 490th Street. West (right) .5mi to 153rd Ave. South (left) .2mi to property on right w/sign.



Listed By:
eXp Realty

Affinity Real Estate Inc. participates in the Regional Multiple Listing Service of Minnesota, Inc Broker Reciprocity (sm) program, allowing us to display other broker's listings on our website. All properties are subject to prior sale, change or withdrawal.



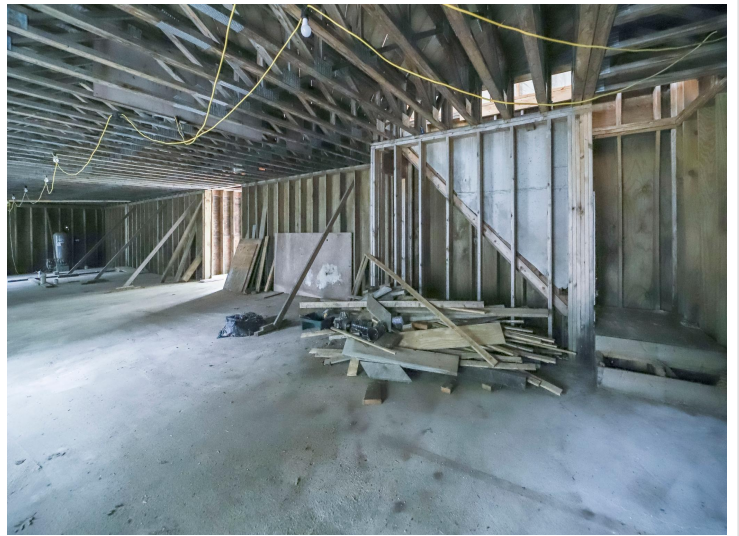
Call Affinity Real Estate

218-237-3333

info@affinityrealestate.com



Affinity Real Estate - 600 Park Avenue South - Park Rapids MN 56470



website: www.AffinityRealEstate.com | email: info@affinityrealestate.com | office: 218-237-3333 | fax: 218-237-3377



\$189,900
MLS 6432941 Residential
48751 153rd Avenue
Verndale MN 56481



website: www.AffinityRealEstate.com | email: info@affinityrealestate.com | office: 218-237-3333 | fax: 218-237-3377

Affinity
REAL ESTATE INC

\$189,900
MLS 6432941 Residential
48751 153rd Avenue
Verndale MN 56481



website: www.AffinityRealEstate.com | email: info@affinityrealestate.com | office: 218-237-3333 | fax: 218-237-3377



\$189,900
MLS 6432941 Residential
48751 153rd Avenue
Verndale MN 56481