



MLS 6433152 Lake Land

\$185,000

Description:

Large lot on Long lake by Vergas. Great fishing and boating. Level building area and elevation to a wooded waters edge. Priced right. Convenient to town.

Additional Details:

Lot Acres	1.77
Lot Dimensions	200x316
School District	549
Taxes	\$1,458
Taxes with Assessments	\$1,458
Tax Year	2024

Additional Features:

Driving Directions:

From Vergas follow Cty Hwy 60 3.8m to right on Long Shore Rd follow to left on Long Shore Trl follow to sign.



Listed By:
Coldwell Banker Preferred Partners

Affinity Real Estate Inc. participates in the Regional Multiple Listing Service of Minnesota, Inc Broker Reciprocity (sm) program, allowing us to display other broker's listings on our website. All properties are subject to prior sale, change or withdrawal.



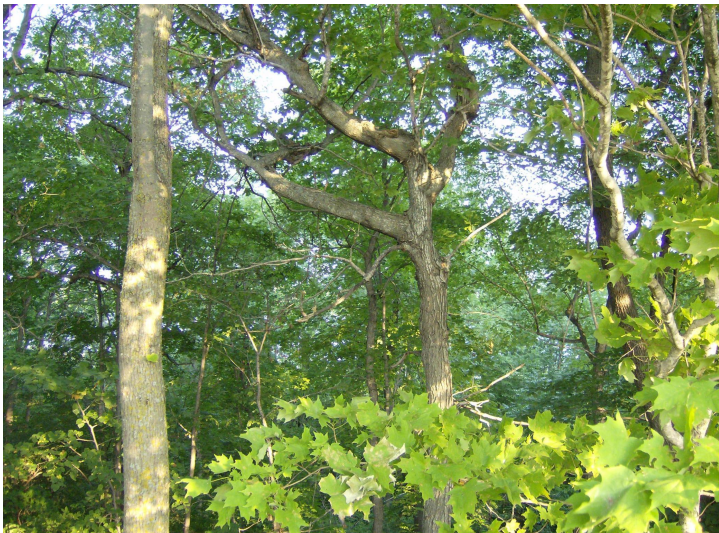
Call Affinity Real Estate

218-237-3333

info@affinityrealestate.com



Affinity Real Estate - 600 Park Avenue South - Park Rapids MN 56470



website: www.AffinityRealEstate.com | email: info@affinityrealestate.com | office: 218-237-3333 | fax:218-237-3377



\$185,000
MLS 6433152 Lake Land
XXX Long Shores Trl.
Frazee MN 56544



website: www.AffinityRealEstate.com | email: info@affinityrealestate.com | office: 218-237-3333 | fax:218-237-3377



\$185,000
MLS 6433152 Lake Land
XXX Long Shores Trl.
Frazee MN 56544