



MLS 6434693 Residential

**\$374,900**

2,752 sq ft  
6 bedrooms  
3 baths

501 Riverside Avenue  
Park Rapids MN 56470

Status: Canceled

**Description:**

Amazing (2,700 sq. ft.) 6 bedroom, 3 bath, city home with 2 kitchens and on 0.52 acres. Complete basement remodel; new furnace, new central air, additional water heater, new appliances, new fixtures, new flooring and new windows. Home has full living quarters on both the main level and the lower level. With kitchen, living room, bathroom and 3 bedrooms on each level. The property is currently being used as a rental unit. This home is located walking distance to the Heartland Park, swimming beach, Heartland Trail, Fishhook River, Depot Park and downtown Park Rapids.

**Additional Details:**

Year Built	1988
Lot Acres	0.52
Lot Dimensions	150x150
Garage Stalls	2
School District	309
Taxes	\$3,432
Taxes with Assessments	\$3,632
Tax Year	2023

**Additional Features:**

**Basement:** Block, Egress Window(s), Finished, Full, Storage Space **Fuel:** Natural Gas **Garage:** 2 **Heat:** Forced Air **Sewer:** City Sewer/Connected  
**Water:** City Water/Connected **Air Conditioning:** Central Air

**Driving Directions:**

From Hwys. 71/34 in Park Rapids. East on Hwy 34. Right on Riverside Ave. Property is on the right.



Listed By:  
Coldwell Banker Crown Realtors

Affinity Real Estate Inc. participates in the Regional Multiple Listing Service of Minnesota, Inc Broker Reciprocity (sm) program, allowing us to display other broker's listings on our website. All properties are subject to prior sale, change or withdrawal.



**Call Affinity Real Estate**

**218-237-3333**

**info@affinityrealestate.com**



**Affinity Real Estate - 600 Park Avenue South - Park Rapids MN 56470**



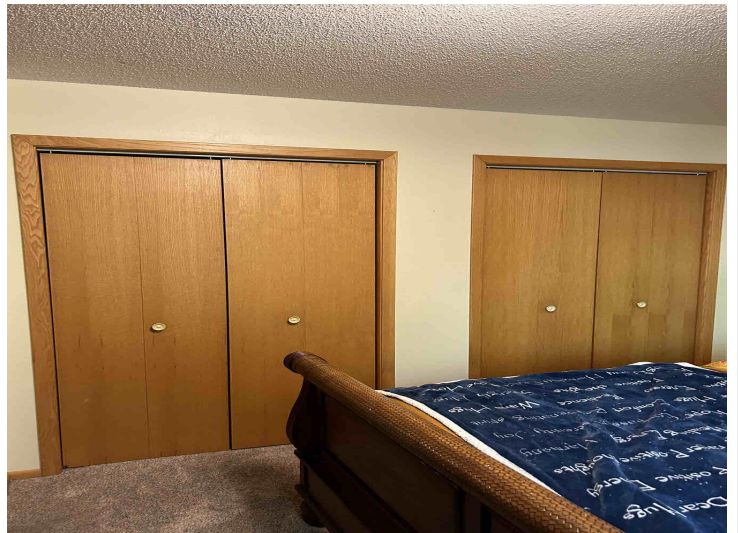
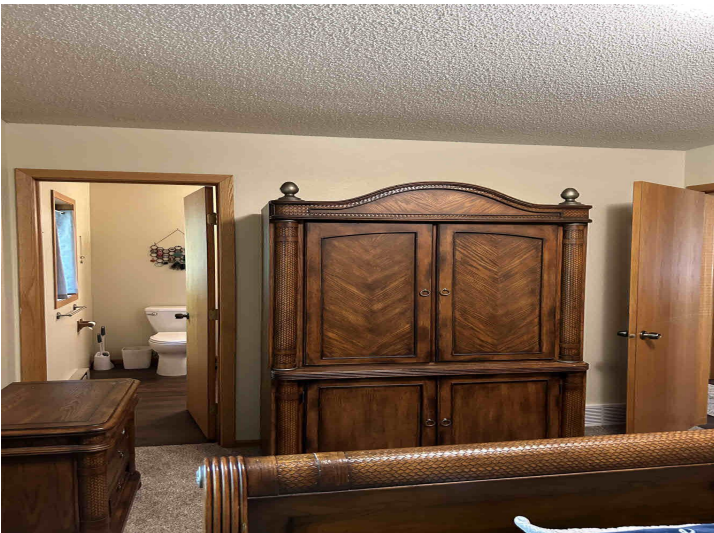
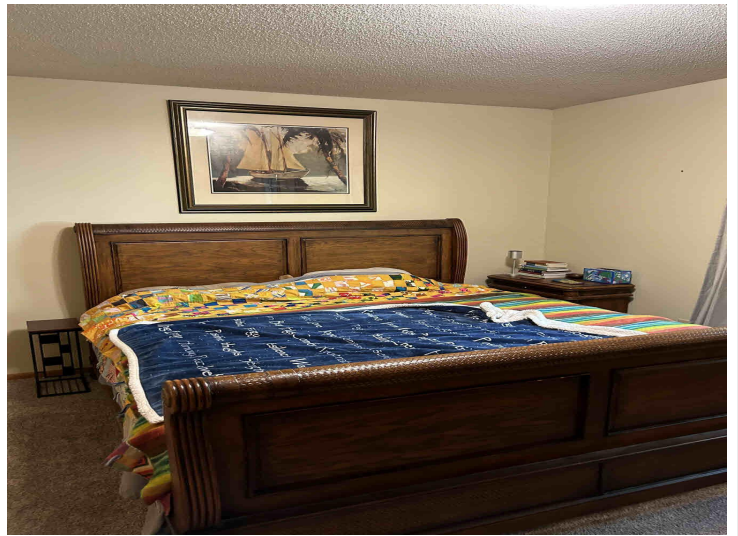


website: [www.AffinityRealEstate.com](http://www.AffinityRealEstate.com) | email: [info@affinityrealestate.com](mailto:info@affinityrealestate.com) | office: 218-237-3333 | fax: 218-237-3377

**Affinity**  
REAL ESTATE INC

**\$374,900**  
MLS 6434693 Residential  
501 Riverside Avenue  
Park Rapids MN 56470



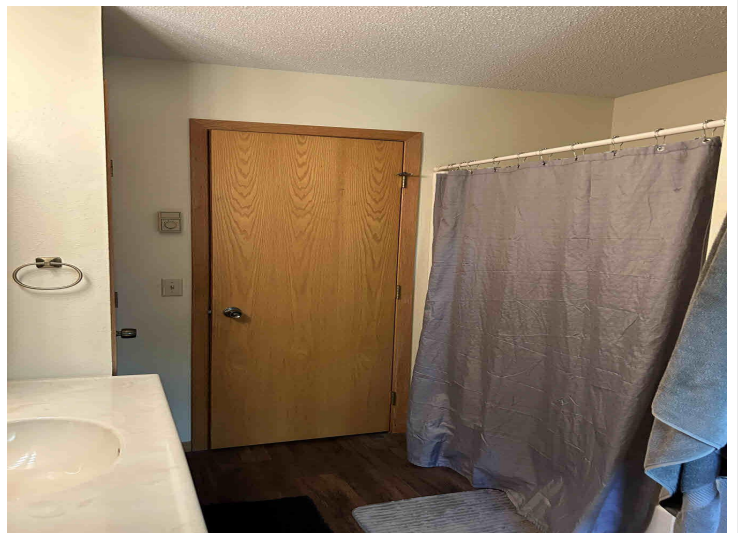
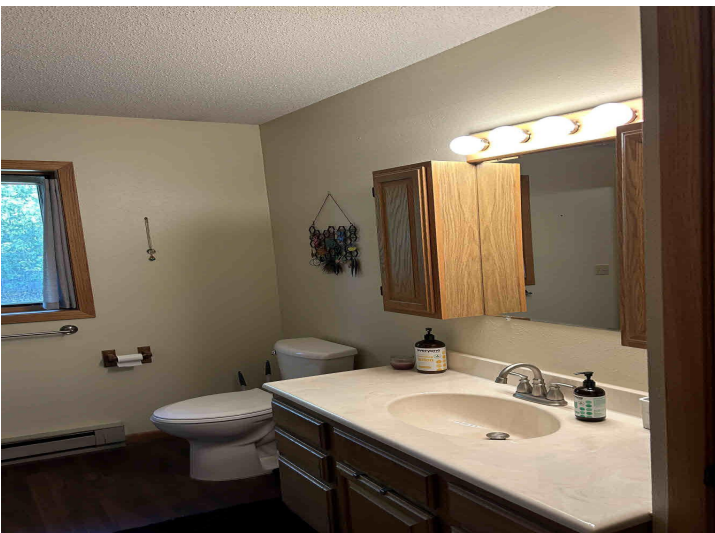
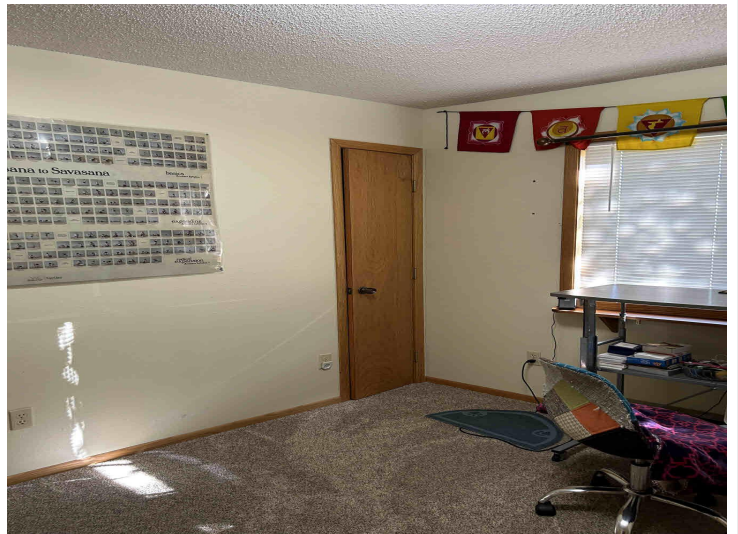
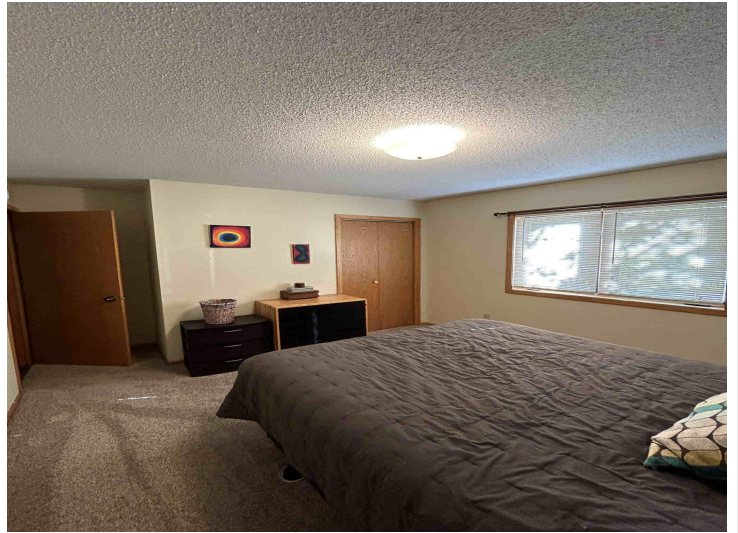


website: [www.AffinityRealEstate.com](http://www.AffinityRealEstate.com) | email: [info@affinityrealestate.com](mailto:info@affinityrealestate.com) | office: 218-237-3333 | fax: 218-237-3377

**Affinity**  
REAL ESTATE INC

**\$374,900**  
MLS 6434693 Residential  
501 Riverside Avenue  
Park Rapids MN 56470



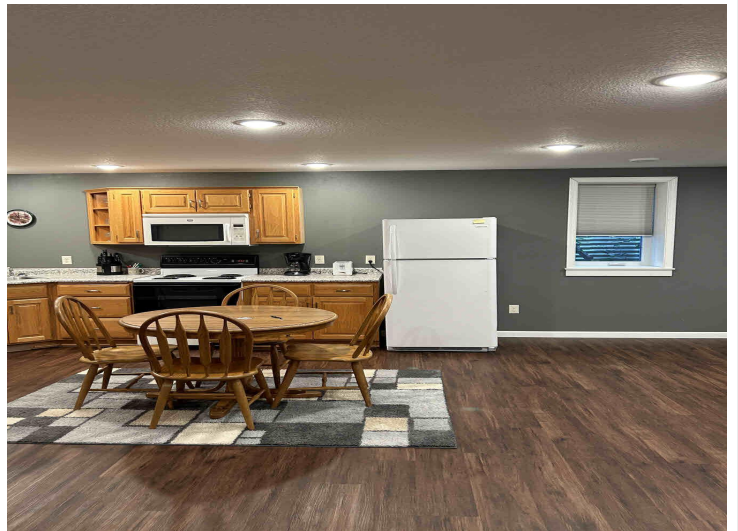
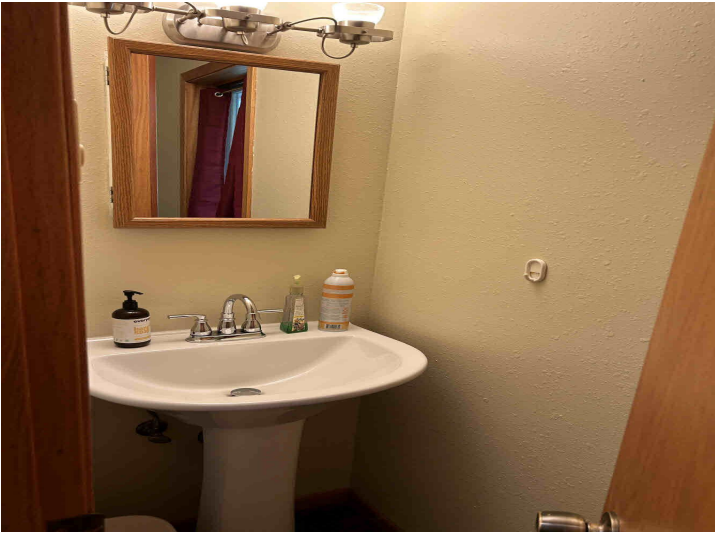


website: [www.AffinityRealEstate.com](http://www.AffinityRealEstate.com) | email: [info@affinityrealestate.com](mailto:info@affinityrealestate.com) | office: 218-237-3333 | fax: 218-237-3377

**Affinity**  
REAL ESTATE INC

**\$374,900**  
MLS 6434693 Residential  
501 Riverside Avenue  
Park Rapids MN 56470



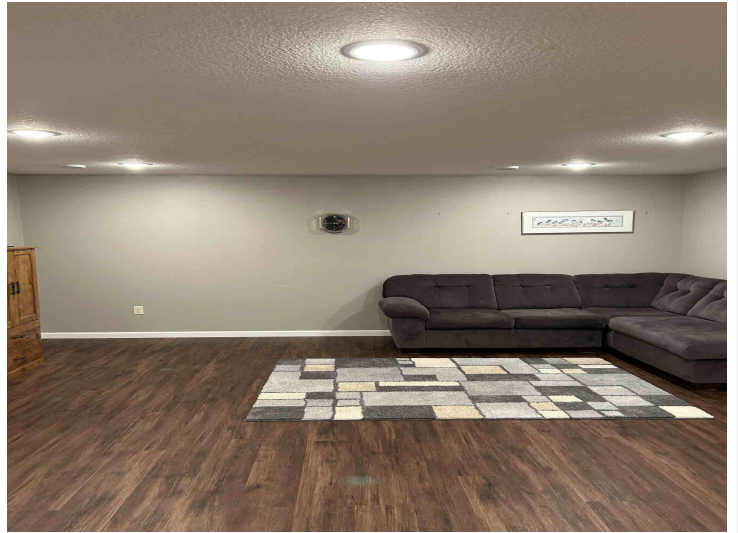


website: [www.AffinityRealEstate.com](http://www.AffinityRealEstate.com) | email: [info@affinityrealestate.com](mailto:info@affinityrealestate.com) | office: 218-237-3333 | fax: 218-237-3377

**Affinity**  
REAL ESTATE INC

**\$374,900**  
MLS 6434693 Residential  
501 Riverside Avenue  
Park Rapids MN 56470



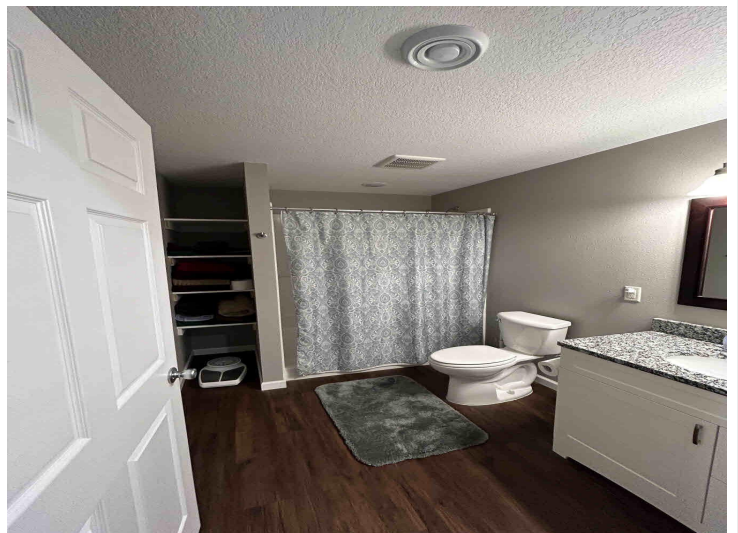
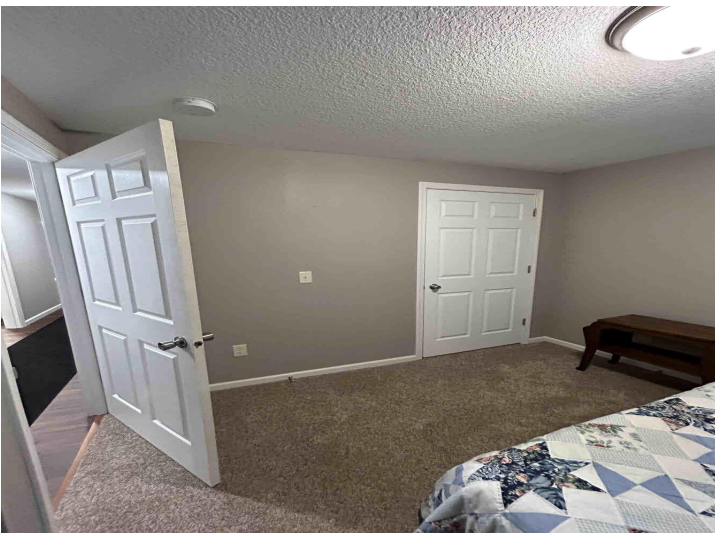
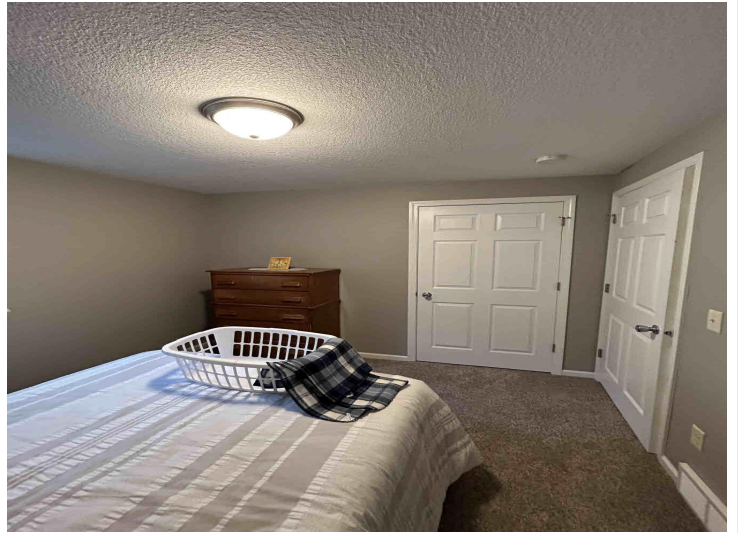
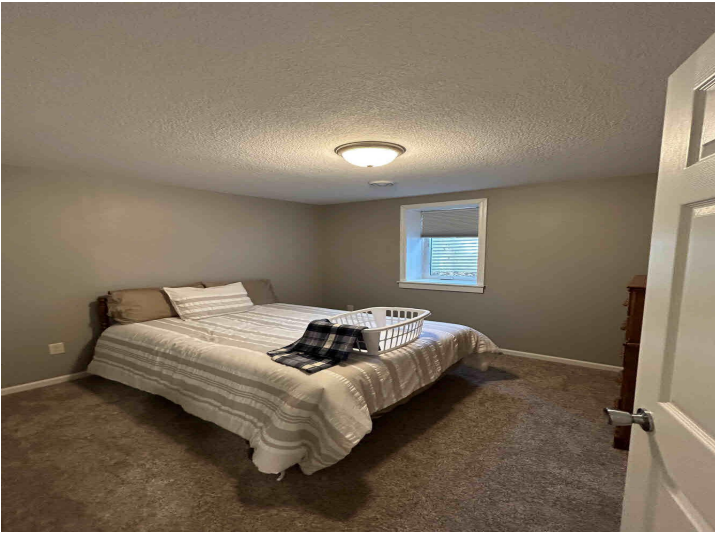


website: [www.AffinityRealEstate.com](http://www.AffinityRealEstate.com) | email: [info@affinityrealestate.com](mailto:info@affinityrealestate.com) | office: 218-237-3333 | fax: 218-237-3377



**\$374,900**  
 MLS 6434693 Residential  
 501 Riverside Avenue  
 Park Rapids MN 56470





website: [www.AffinityRealEstate.com](http://www.AffinityRealEstate.com) | email: [info@affinityrealestate.com](mailto:info@affinityrealestate.com) | office: 218-237-3333 | fax: 218-237-3377



**\$374,900**  
MLS 6434693 Residential  
501 Riverside Avenue  
Park Rapids MN 56470



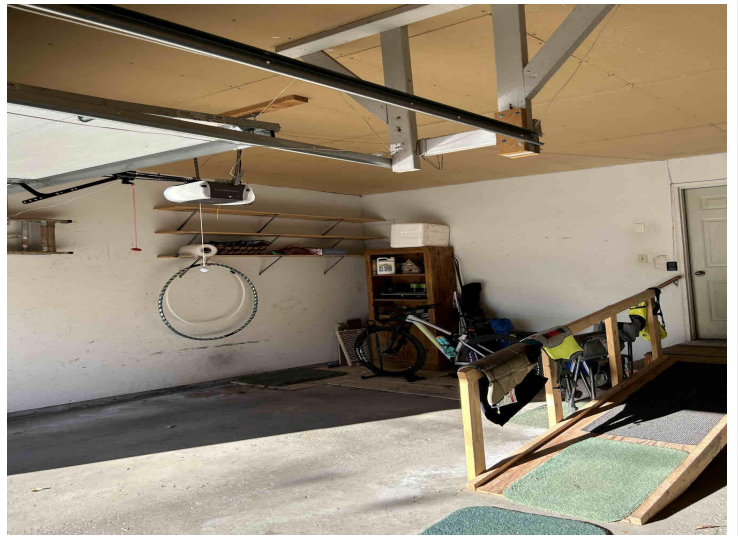
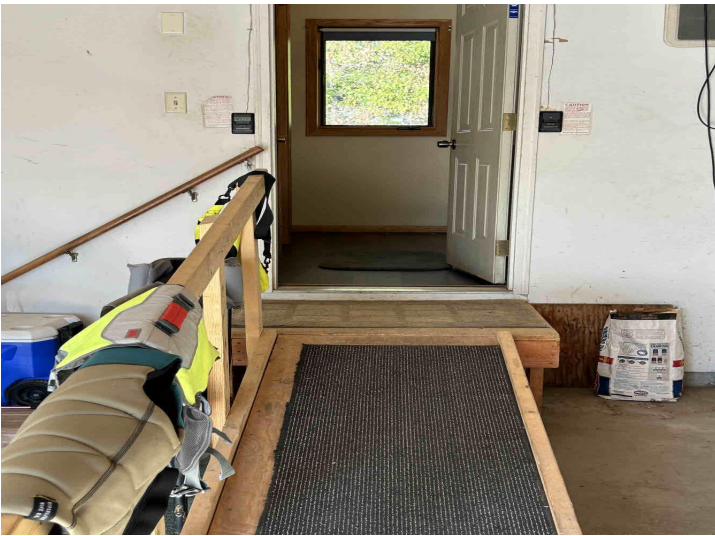
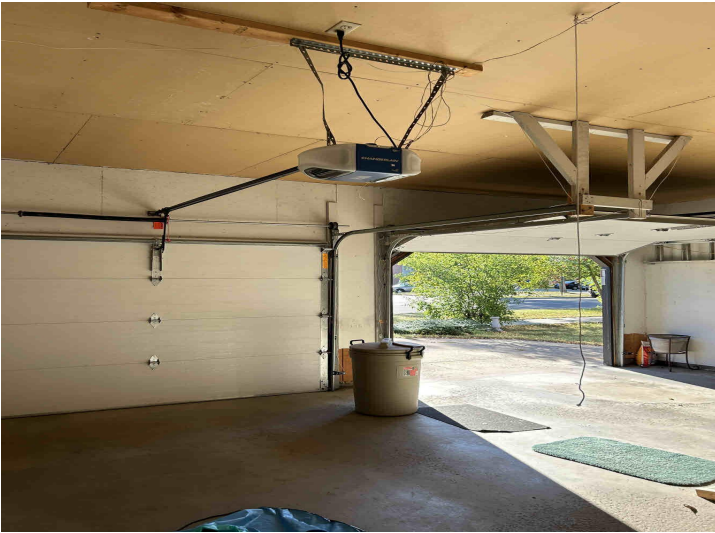


website: [www.AffinityRealEstate.com](http://www.AffinityRealEstate.com) | email: [info@affinityrealestate.com](mailto:info@affinityrealestate.com) | office: 218-237-3333 | fax: 218-237-3377



**\$374,900**  
 MLS 6434693 Residential  
 501 Riverside Avenue  
 Park Rapids MN 56470





website: [www.AffinityRealEstate.com](http://www.AffinityRealEstate.com) | email: [info@affinityrealestate.com](mailto:info@affinityrealestate.com) | office: 218-237-3333 | fax: 218-237-3377

**Affinity**  
REAL ESTATE INC

**\$374,900**  
MLS 6434693 Residential  
501 Riverside Avenue  
Park Rapids MN 56470





website: [www.AffinityRealEstate.com](http://www.AffinityRealEstate.com) | email: [info@affinityrealestate.com](mailto:info@affinityrealestate.com) | office: 218-237-3333 | fax: 218-237-3377

**Affinity**  
REAL ESTATE INC

**\$374,900**  
MLS 6434693 Residential  
501 Riverside Avenue  
Park Rapids MN 56470





website: [www.AffinityRealEstate.com](http://www.AffinityRealEstate.com) | email: [info@affinityrealestate.com](mailto:info@affinityrealestate.com) | office: 218-237-3333 | fax: 218-237-3377



**\$374,900**  
 MLS 6434693 Residential  
 501 Riverside Avenue  
 Park Rapids MN 56470