



MLS 6435559 Land

\$14,000

0.22 Acres

Raw Land

Lot31 4240 Irvine Avenue
Bemidji MN 56601

Status: Closed

Description:

In the city of Bemidji limits and close to shopping, restaurants, and all that Bemidji has to offer, Villas at Natures Edge is a private association and the road and lawn care is maintained by the association. Ready for you to build your new home!

Additional Details:

Lot Acres	0.22
Lot Dimensions	110x125x104x86
School District	31
Taxes	\$420
Taxes with Assessments	\$420
Tax Year	2022

Additional Features:

Driving Directions:

North on Irvine Avenue to east (right) at Villas at Natures Edge entrance. Keep right to lot #31 in first cul-de-sac.



Listed By:
Coldwell Banker Crown Realtors

Affinity Real Estate Inc. participates in the Regional Multiple Listing Service of Minnesota, Inc Broker Reciprocity (sm) program, allowing us to display other broker's listings on our website. All properties are subject to prior sale, change or withdrawal.



Call Affinity Real Estate

218-237-3333

info@affinityrealestate.com

MLS



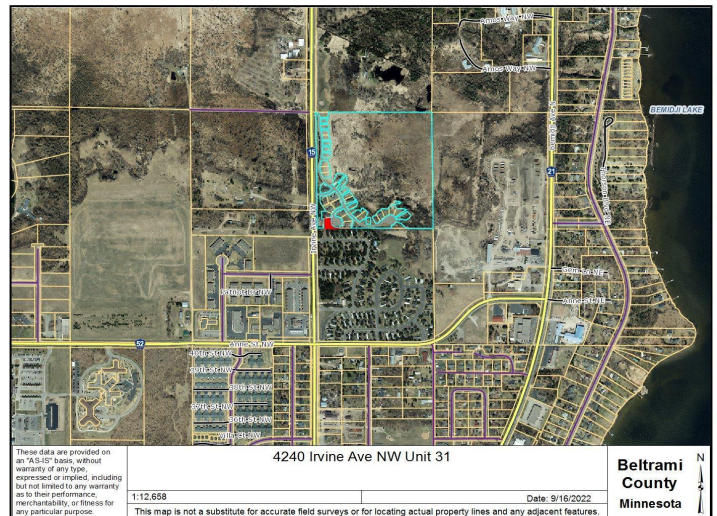
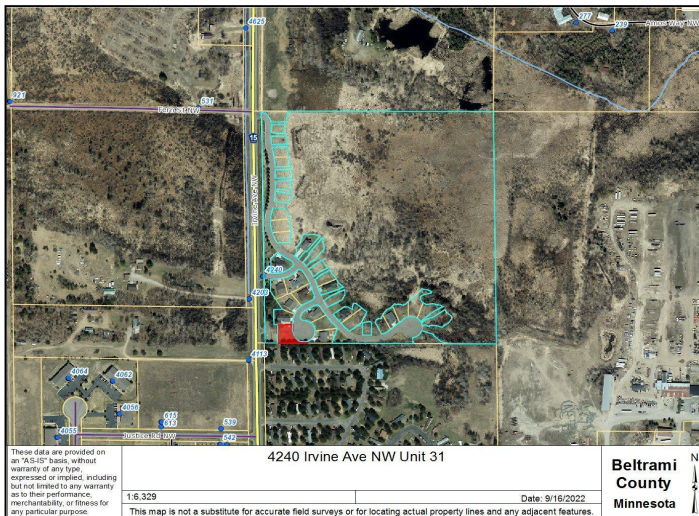
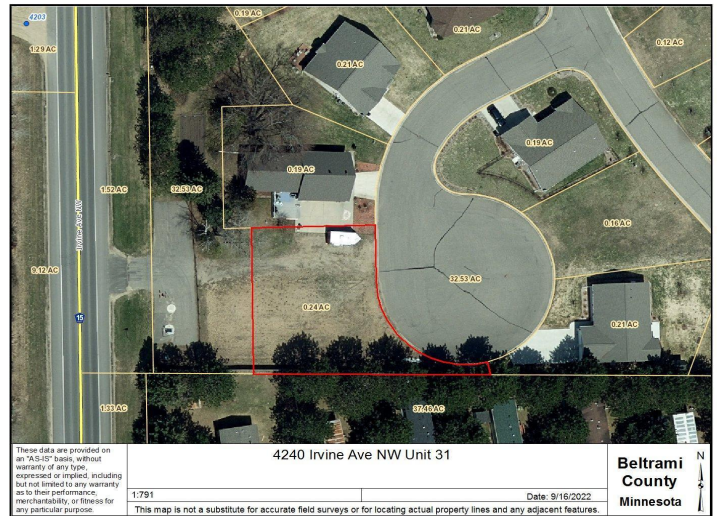
Affinity Real Estate - 600 Park Avenue South - Park Rapids MN 56470



website: www.AffinityRealEstate.com | email: info@affinityrealestate.com | office: 218-237-3333 | fax: 218-237-3377



\$14,000
MLS 6435559 Land
Lot31 4240 Irvine Avenue
Bemidji MN 56601



website: www.AffinityRealEstate.com | email: info@affinityrealestate.com | office: 218-237-3333 | fax: 218-237-3377



\$14,000
 MLS 6435559 Land
 Lot31 4240 Irvine Avenue
 Bemidji MN 56601