



MLS 6436651 Land

\$29,900

0.44 Acres
Finished Lot(s)

809 Central Street
Bagley MN 56621

Status: Active

Description:

Prime building lot in Bagley! It is located on the corner of Hwy #2 and Sunset Ave. Complete with a garage, paved driveway, city water, sewer, and power are already in (was previously a home on the property that burnt down, and debris was removed). Property is currently zoned "residential".

Additional Details:

Lot Acres	0.44
Lot Dimensions	132x144
School District	162
Taxes	\$106
Taxes with Assessments	\$106
Tax Year	2024

Additional Features:

Driving Directions:

West of stoplights in Bagley about 1/2 mile on right



Listed By:
Realty Experts, LLC

Affinity Real Estate Inc. participates in the Regional Multiple Listing Service of Minnesota, Inc Broker Reciprocity (sm) program, allowing us to display other broker's listings on our website. All properties are subject to prior sale, change or withdrawal.



Call Affinity Real Estate

218-237-3333

info@affinityrealestate.com



Affinity Real Estate - 600 Park Avenue South - Park Rapids MN 56470



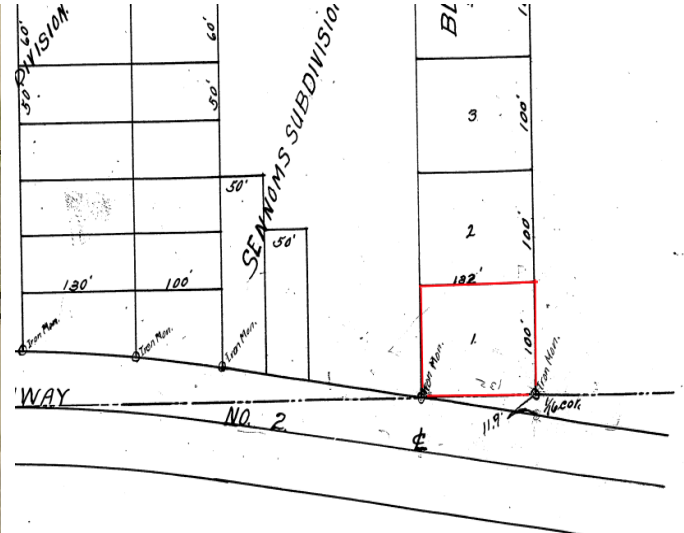
website: www.AffinityRealEstate.com | email: info@affinityrealestate.com | office: 218-237-3333 | fax: 218-237-3377



\$29,900
 MLS 6436651 Land
 809 Central Street
 Bagley MN 56621



**Approx outline of property---accuracy is NOT guaranteed*



website: www.AffinityRealEstate.com | email: info@affinityrealestate.com | office: 218-237-3333 | fax: 218-237-3377

Affinity
REAL ESTATE INC

\$29,900
MLS 6436651 Land
809 Central Street
Bagley MN 56621