



MLS 6439114 Land

\$40,000

2.8 Acres
Raw Land

XXX TBD State Highway 84
Longville MN 56655

Status: Pending

Description:

Beautiful acreage just south of Longville off the State Hwy 84. 2.8 Acres with easy access and several building sites as the entire property is high and dry. Mixed pine and hardwoods with some clearing and crushed asphalt driveway already in. Gorgeous new home site, maybe storage outbuildings for lake homeowners, or a great investment for something in the future. Hard to find in today's market!

Additional Details:

Lot Acres	2.8
Lot Dimensions	250x510xirr
School District	118
Taxes	\$54
Taxes with Assessments	\$54
Tax Year	2023

Additional Features:

Driving Directions:

From Longville: south on State Hwy 84 to sign ad property on the left.



Listed By:
Bill Hansen Realty/Longville

Affinity Real Estate Inc. participates in the Regional Multiple Listing Service of Minnesota, Inc Broker Reciprocity (sm) program, allowing us to display other broker's listings on our website. All properties are subject to prior sale, change or withdrawal.



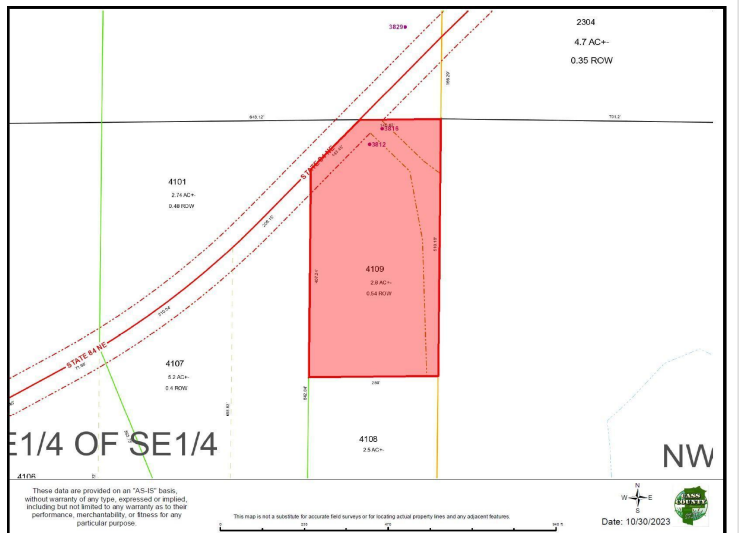
Call Affinity Real Estate

218-237-3333

info@affinityrealestate.com



Affinity Real Estate - 600 Park Avenue South - Park Rapids MN 56470



website: www.AffinityRealEstate.com | email: info@affinityrealestate.com | office: 218-237-3333 | fax: 218-237-3377



\$40,000
 MLS 6439114 Land
 XXX TBD State Highway 84
 Longville MN 56655

