



MLS 6441837 Land

\$299,999

6.71 Acres
Subdivided

TBD Mitchell Road
Nisswa MN 56468

Status: Active

Description:

Located just west of Upper Gull Lake awaits 7 acres of wooded haven. An opportunity to build your dream home or cabin on the Stoney Brook Creek. A very well known trout creek that flows into Gull Lake. With over 300 ft of frontage the views are breathtaking. Throughout the property you will find trails, mature trees, a possible build site, and wildlife all over. Enjoy the privacy of living on acreage yet less than a mile away from Gull Lake. Close to both Pequot Lakes and Nisswa, the location is everything with this lot! 1000s of acres of public land and trails near by as well. An additional 3.97 acres of tax forfeited land can also be purchased through the county.

Additional Details:

Lot Acres	6.71
Lot Dimensions	292287.6
School District	186
Taxes	\$1,156
Taxes with Assessments	\$1,222
Tax Year	2023

Additional Features:

Driving Directions:

From 371 take county rd 29 heading west, go past upper gull lake, take a right onto Mitchel Rd, property is located on the left side of the dead end, stay left on the driveway.



Listed By:
Woods to Water Real Estate

Affinity Real Estate Inc. participates in the Regional Multiple Listing Service of Minnesota, Inc Broker Reciprocity (sm) program, allowing us to display other broker's listings on our website. All properties are subject to prior sale, change or withdrawal.



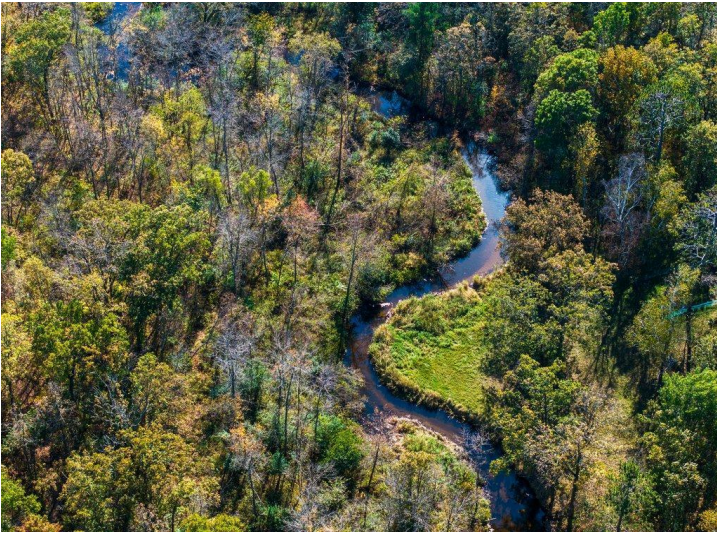
Call Affinity Real Estate

218-237-3333

info@affinityrealestate.com



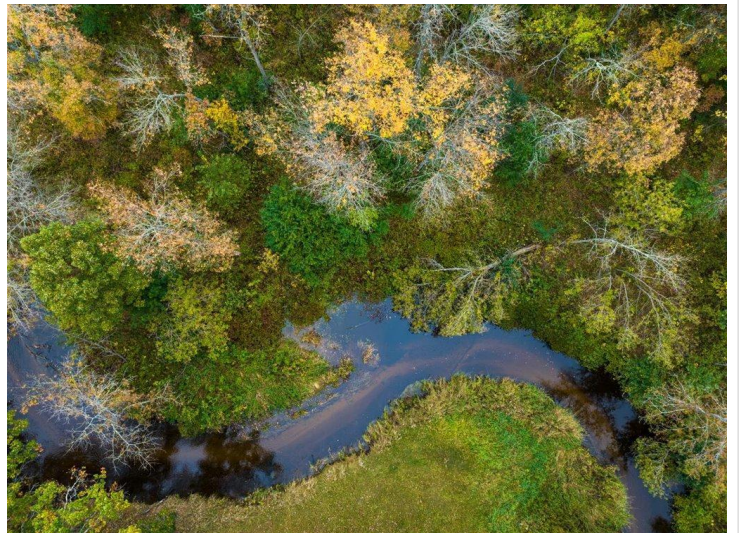
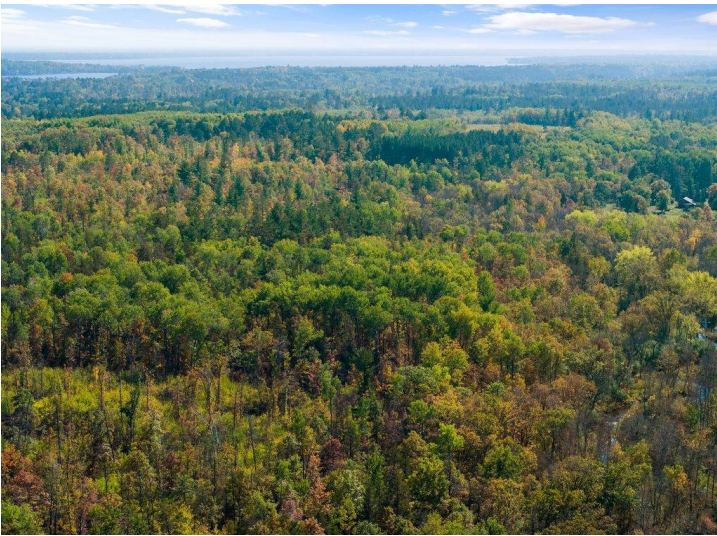
Affinity Real Estate - 600 Park Avenue South - Park Rapids MN 56470



website: www.AffinityRealEstate.com | email: info@affinityrealestate.com | office: 218-237-3333 | fax:218-237-3377



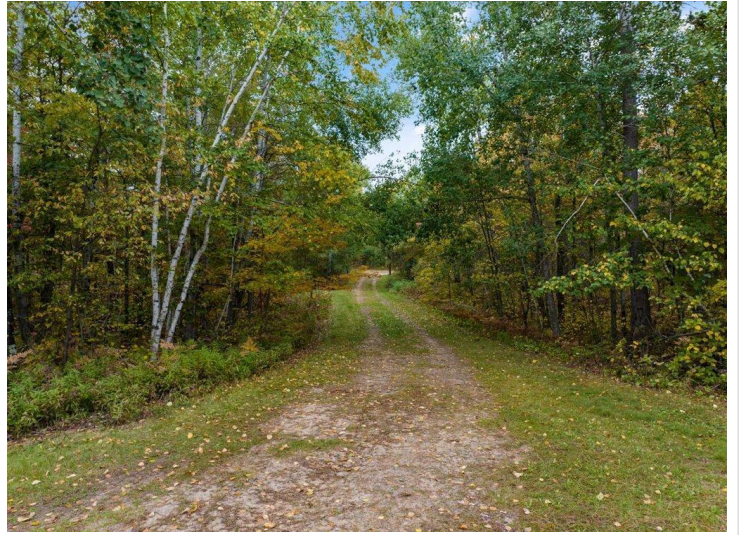
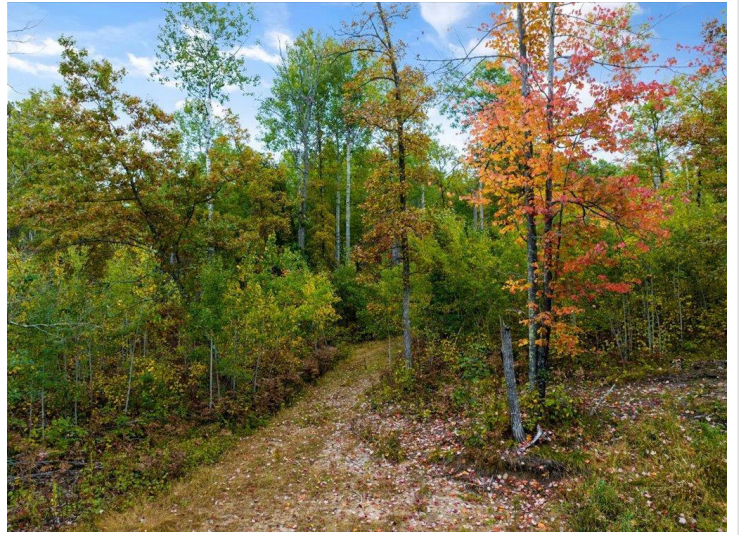
\$299,999
MLS 6441837 Land
TBD Mitchell Road
Nisswa MN 56468



website: www.AffinityRealEstate.com | email: info@affinityrealestate.com | office: 218-237-3333 | fax:218-237-3377



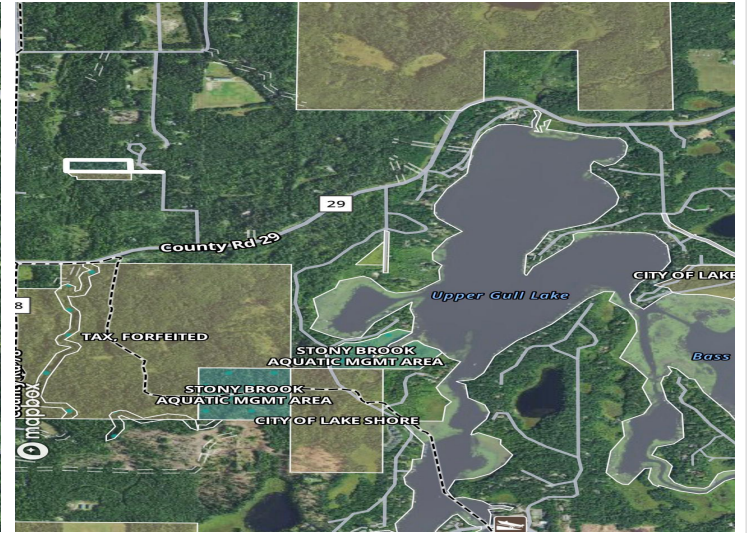
\$299,999
MLS 6441837 Land
TBD Mitchell Road
Nisswa MN 56468



website: www.AffinityRealEstate.com | email: info@affinityrealestate.com | office: 218-237-3333 | fax:218-237-3377

Affinity
REAL ESTATE INC

\$299,999
MLS 6441837 Land
TBD Mitchell Road
Nisswa MN 56468



website: www.AffinityRealEstate.com | email: info@affinityrealestate.com | office: 218-237-3333 | fax:218-237-3377



\$299,999
MLS 6441837 Land
TBD Mitchell Road
Nisswa MN 56468