



MLS 6443838 Land

\$44,900

0.94 Acres
Raw Land

*** Birchmont Drive
Bemidji MN 56601

Status: Active

Description:

Looking for a location to build your new dream home? This beautiful heavily wooded .94 acre lot is full of a variety of mature trees and is located just off Birchmont Drive NE. A poured apron exists at the access to an easement to the property. Realtor note: City water and sewer is stubbed-in just off Birchmont Drive NE. The property is located near an area park/beach area, boat accesses & the bike trail. Come build and enjoy!

Additional Details:

Lot Acres	0.94
Lot Dimensions	178x225
School District	31
Taxes	\$508
Taxes with Assessments	\$508
Tax Year	2024

Additional Features:

Driving Directions:

5000 block of Birchmont Dr NE. West side of road. See sign at the easement access location.



Listed By:
CENTURY 21 Dickinson Realtors

Affinity Real Estate Inc. participates in the Regional Multiple Listing Service of Minnesota, Inc Broker Reciprocity (sm) program, allowing us to display other broker's listings on our website. All properties are subject to prior sale, change or withdrawal.



Call Affinity Real Estate

218-237-3333

info@affinityrealestate.com



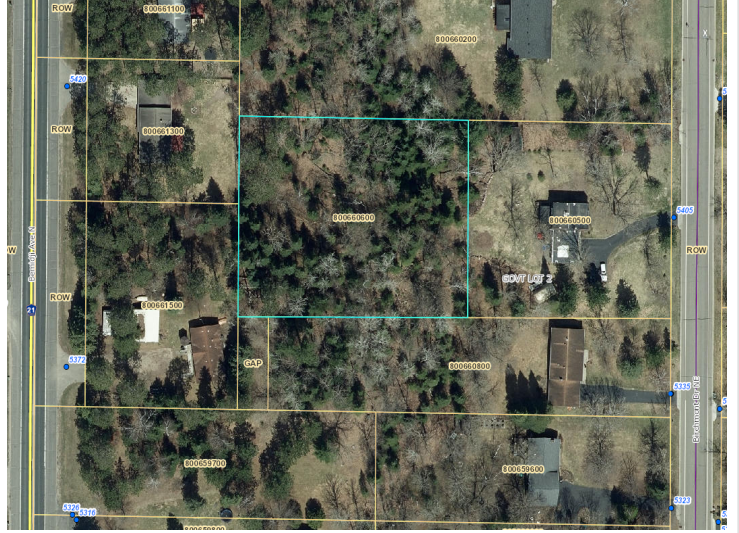
Affinity Real Estate - 600 Park Avenue South - Park Rapids MN 56470



website: www.AffinityRealEstate.com | email: info@affinityrealestate.com | office: 218-237-3333 | fax: 218-237-3377



\$44,900
MLS 6443838 Land
*** Birchmont Drive
Bemidji MN 56601



website: www.AffinityRealEstate.com | email: info@affinityrealestate.com | office: 218-237-3333 | fax:218-237-3377



\$44,900
MLS 6443838 Land
*** Birchmont Drive
Bemidji MN 56601