



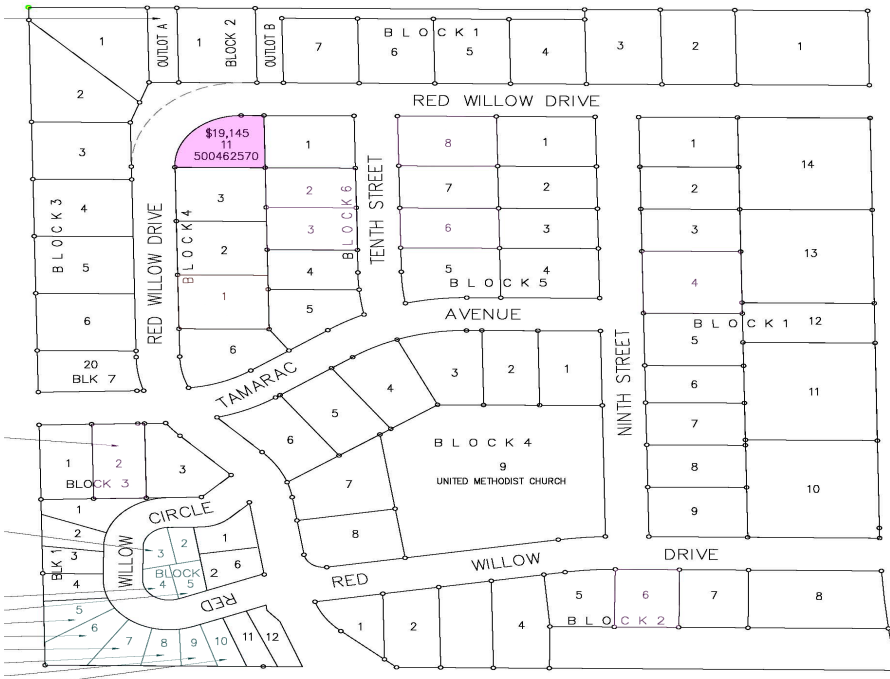
MLS 6444815 Land

\$19,145

0.28 Acres
Subdivided

936 Red Willow Drive
Frazee MN 56544

Status: Active



Description:

Building lot in the Red Willow Heights development located in the city of Frazee. This is an established neighborhood with a hometown feel. The development offers city water, city sewer & natural gas! Enjoy the amenities of small town living in the lakes area! Covenants Apply

Additional Details:

Lot Acres	0.28
Lot Dimensions	Corner Lot
School District	23
Taxes	(unreported)
Taxes with Assessments	(unreported)
Tax Year	2023

Additional Features:

Driving Directions:

US-10E turn left on Co Hwy 1, left on 5th St NW left on Birch Ave W left on Red Willow Dr Lot on right



Listed By:
Dakota Plains Realty

Affinity Real Estate Inc. participates in the Regional Multiple Listing Service of Minnesota, Inc Broker Reciprocity (sm) program, allowing us to display other broker's listings on our website. All properties are subject to prior sale, change or withdrawal.



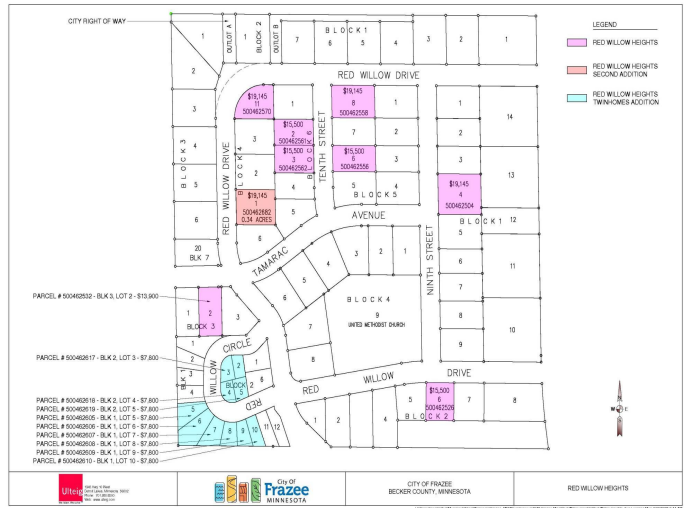
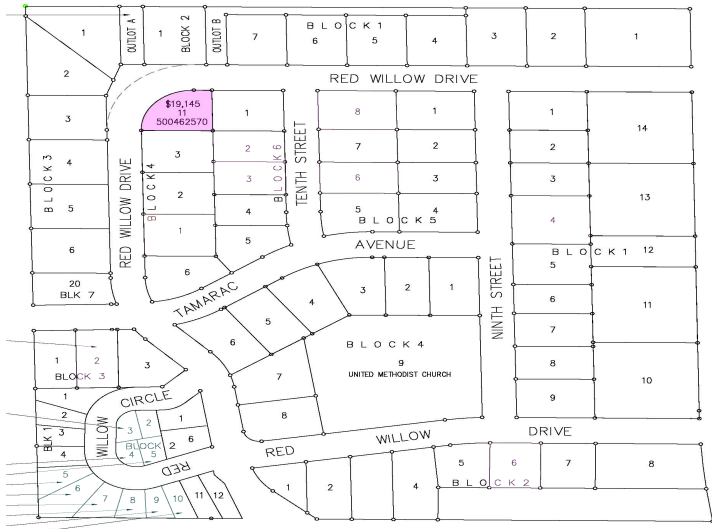
Call Affinity Real Estate

218-237-3333

info@affinityrealestate.com



Affinity Real Estate - 600 Park Avenue South - Park Rapids MN 56470



website: www.AffinityRealEstate.com | email: info@affinityrealestate.com | office: 218-237-3333 | fax: 218-237-3377



\$19,145
 MLS 6444815 Land
 936 Red Willow Drive
 Frazee MN 56544