



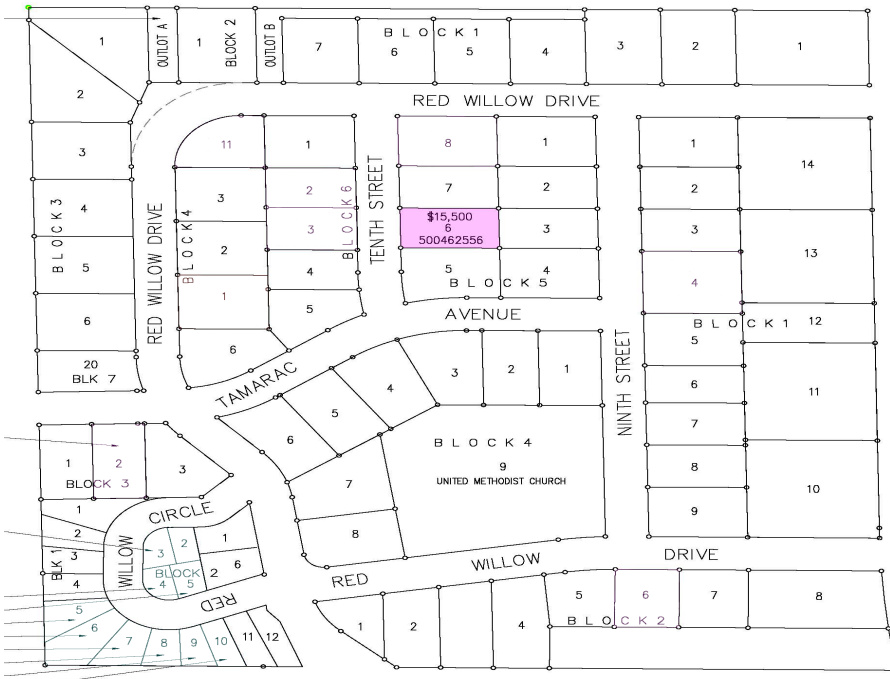
MLS 6444892 Land

**\$15,500**

0.28 Acres  
Subdivided

702 10 Street  
Frazee MN 56544

Status: Active



**Description:**

Building lot in the Red Willow Heights development located in the city of Frazee. This is an established neighborhood with a hometown feel. The development offers city water, city sewer & natural gas! Enjoy the amenities of small town living in the lakes area! Covenants Apply

**Additional Details:**

Lot Acres	0.28
Lot Dimensions	150.04 x 8-.02
School District	23
Taxes	(unreported)
Taxes with Assessments	(unreported)
Tax Year	2023

**Additional Features:**

**Driving Directions:**

US-10E turn onto Co Hwy 10 Turn left onto Birch Ave W turn left onto 10 St NW lot on left



Listed By:  
Dakota Plains Realty

Affinity Real Estate Inc. participates in the Regional Multiple Listing Service of Minnesota, Inc Broker Reciprocity (sm) program, allowing us to display other broker's listings on our website. All properties are subject to prior sale, change or withdrawal.



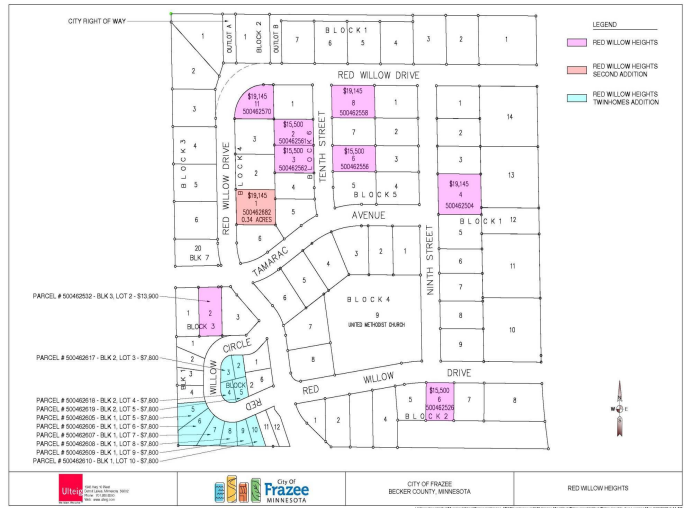
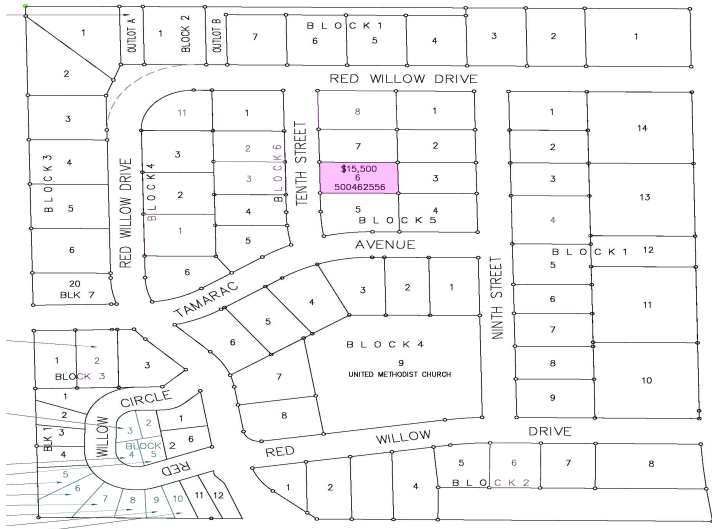
Call Affinity Real Estate

**218-237-3333**

[info@affinityrealestate.com](mailto:info@affinityrealestate.com)



Affinity Real Estate - 600 Park Avenue South - Park Rapids MN 56470



website: [www.AffinityRealEstate.com](http://www.AffinityRealEstate.com) | email: [info@affinityrealestate.com](mailto:info@affinityrealestate.com) | office: 218-237-3333 | fax:218-237-3377



**\$15,500**  
 MLS 6444892 Land  
 702 10 Street  
 Frazee MN 56544