



MLS 6446854 Residential

\$329,900

1,783 sq ft
3 bedrooms
2 baths

TBD Moonlight Lane
Bemidji MN 56601

Status: Active

Description:

Say hello to the new community, Mountain View Meadows in the city limits of Bemidji, south end of town. The Spur model floorplan is a 3 bedroom, 2 bath open floor plan one level living is to be built on lot #15. Look forward to an equipped play area for children, soccer or snowboarding, biking or hiking paths, there will be plenty to enjoy. Drive through and envision your forever home. Call for details.

Additional Details:

Year Built	2023
Lot Acres	0.26
Lot Dimensions	74x140x114x103
Garage Stalls	2
School District	31
Taxes	\$236
Taxes with Assessments	\$236
Tax Year	2023

Additional Features:

Basement: Slab **Fuel:** Natural Gas **Garage:** 2 **Heat:** Ductless Mini-Split, Hot Water, Radiant Floor **Sewer:** City Sewer/Connected **Water:** City Water/Connected **Air Conditioning:** Ductless Mini-Split

Driving Directions:

South on Washington Ave S to Shedhorn St SW. Right on Shedhorn St SW to Moonlight Ln SW. Right on Moonlight, lot on the left.



Listed By:
Better Homes and Gardens Real Estate First Cho

Affinity Real Estate Inc. participates in the Regional Multiple Listing Service of Minnesota, Inc Broker Reciprocity (sm) program, allowing us to display other broker's listings on our website. All properties are subject to prior sale, change or withdrawal.



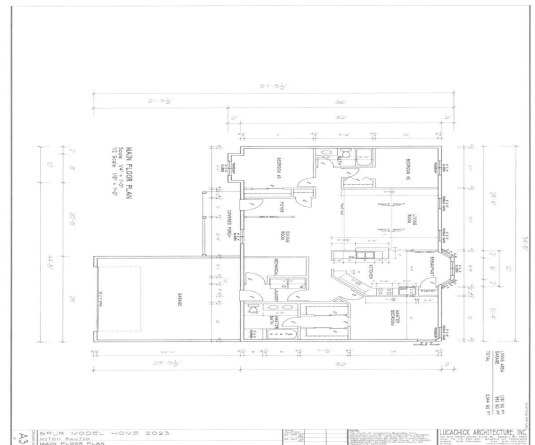
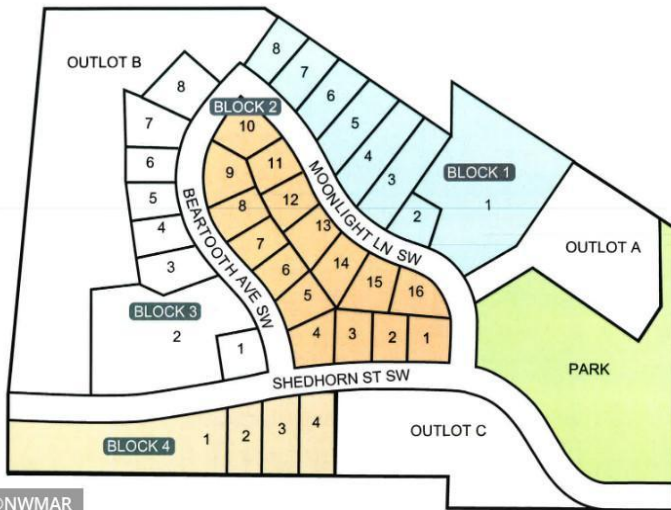
Call Affinity Real Estate

218-237-3333

info@affinityrealestate.com



Affinity Real Estate - 600 Park Avenue South - Park Rapids MN 56470

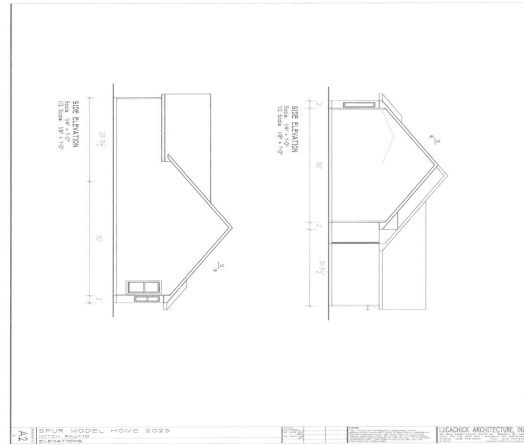


©NWMAR

website: www.AffinityRealEstate.com | email: info@affinityrealestate.com | office: 218-237-3333 | fax: 218-237-3377



\$329,900
 MLS 6446854 Residential
 TBD Moonlight Lane
 Bemidji MN 56601



website: www.AffinityRealEstate.com | email: info@affinityrealestate.com | office: 218-237-3333 | fax:218-237-3377



\$329,900
 MLS 6446854 Residential
 TBD Moonlight Lane
 Bemidji MN 56601