



MLS 6448443 Lake Home

**\$1,200,000**

1,845 sq ft  
4 bedrooms  
3 baths

23718 Melissa Drive  
Detroit Lakes MN 56501

Waterfront: Melissa

Status: Hold

**Description:**

Lake Melissa! This property has been in the family for decades! Newly built in 2019 with 4 bedrooms, 3 baths, on slab. This custom home has a great, sunny, open floorplan with a cozy gas fireplace! The home is situated on 75 ft of level shoreline on the Southshore of Melissa! Nice hard sandy bottom! Great swimming! The home and attached garage both have in floor heat! LP smart siding, natural gas, central AC, new deep well and septic! Maintenance free deck! Meticulous beautiful lawn! Convenient lakeside storage shed for all your lake toys! 2022 aluminum dock included!

**Additional Details:**

Year Built	2019
Lot Acres	0.19
Lot Dimensions	75x
Garage Stalls	1
School District	22
Taxes	\$5,133
Taxes with Assessments	\$5,288
Tax Year	2023

**Additional Features:**

**Basement:** Slab **Fuel:** Natural Gas **Garage:** 1 **Heat:** Boiler, Forced Air, Radiant Floor **Sewer:** Holding Tank, Septic System Compliant - Yes **Water:** Submersible - 4 Inch, Drilled **Air Conditioning:** Central Air

**Driving Directions:**

From Detroit Lakes go South on Hwy 59 to South Melissa Drive



Listed By:  
Counselor Realty of Detroit Lakes

Affinity Real Estate Inc. participates in the Regional Multiple Listing Service of Minnesota, Inc Broker Reciprocity (sm) program, allowing us to display other broker's listings on our website. All properties are subject to prior sale, change or withdrawal.



**Call Affinity Real Estate**

**218-237-3333**

**info@affinityrealestate.com**



**Affinity Real Estate - 600 Park Avenue South - Park Rapids MN 56470**



website: [www.AffinityRealEstate.com](http://www.AffinityRealEstate.com) | email: [info@affinityrealestate.com](mailto:info@affinityrealestate.com) | office: 218-237-3333 | fax:218-237-3377



**\$1,200,000**  
MLS 6448443 Lake Home  
23718 Melissa Drive  
Detroit Lakes MN 56501



website: [www.AffinityRealEstate.com](http://www.AffinityRealEstate.com) | email: [info@affinityrealestate.com](mailto:info@affinityrealestate.com) | office: 218-237-3333 | fax:218-237-3377



**\$1,200,000**  
MLS 6448443 Lake Home  
23718 Melissa Drive  
Detroit Lakes MN 56501



website: [www.AffinityRealEstate.com](http://www.AffinityRealEstate.com) | email: [info@affinityrealestate.com](mailto:info@affinityrealestate.com) | office: 218-237-3333 | fax: 218-237-3377

**Affinity**  
REAL ESTATE INC

**\$1,200,000**  
MLS 6448443 Lake Home  
23718 Melissa Drive  
Detroit Lakes MN 56501



website: [www.AffinityRealEstate.com](http://www.AffinityRealEstate.com) | email: [info@affinityrealestate.com](mailto:info@affinityrealestate.com) | office: 218-237-3333 | fax: 218-237-3377

**Affinity**  
REAL ESTATE INC

**\$1,200,000**  
MLS 6448443 Lake Home  
23718 Melissa Drive  
Detroit Lakes MN 56501



website: [www.AffinityRealEstate.com](http://www.AffinityRealEstate.com) | email: [info@affinityrealestate.com](mailto:info@affinityrealestate.com) | office: 218-237-3333 | fax: 218-237-3377

**Affinity**  
REAL ESTATE INC

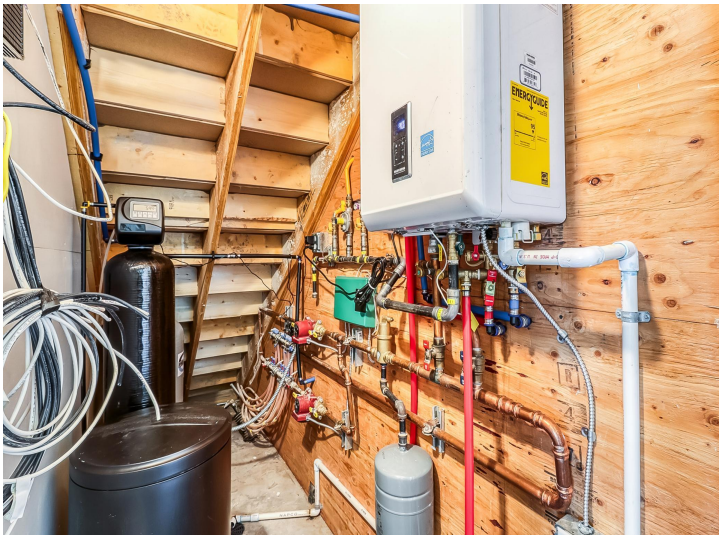
**\$1,200,000**  
MLS 6448443 Lake Home  
23718 Melissa Drive  
Detroit Lakes MN 56501



website: [www.AffinityRealEstate.com](http://www.AffinityRealEstate.com) | email: [info@affinityrealestate.com](mailto:info@affinityrealestate.com) | office: 218-237-3333 | fax:218-237-3377

**Affinity**  
REAL ESTATE INC

**\$1,200,000**  
MLS 6448443 Lake Home  
23718 Melissa Drive  
Detroit Lakes MN 56501



website: [www.AffinityRealEstate.com](http://www.AffinityRealEstate.com) | email: [info@affinityrealestate.com](mailto:info@affinityrealestate.com) | office: 218-237-3333 | fax:218-237-3377



**\$1,200,000**  
MLS 6448443 Lake Home  
23718 Melissa Drive  
Detroit Lakes MN 56501





website: [www.AffinityRealEstate.com](http://www.AffinityRealEstate.com) | email: [info@affinityrealestate.com](mailto:info@affinityrealestate.com) | office: 218-237-3333 | fax:218-237-3377



**\$1,200,000**  
MLS 6448443 Lake Home  
23718 Melissa Drive  
Detroit Lakes MN 56501