



MLS 6449656 Lake Home

\$799,000

1,170 sq ft
3 bedrooms
2 baths

8678 Interlachen Road
Nisswa MN 56468

Waterfront: Gull

Status: Hold

Description:

Great 3BR/2BA GULL LAKE cabin with many recent updates. Convenient Lake Shore location puts you right in the heart of everything the Brainerd Lakes Area has to offer. Fine dining, world class golf, and the entire Gull Lake Chain are right outside your door. It's time to pack your bags and start making memories that will last a lifetime!

Additional Details:

Year Built	1970
Lot Acres	0.27
Lot Dimensions	50x300x47x280
Garage Stalls	1
School District	181
Taxes	\$3,290
Taxes with Assessments	\$3,356
Tax Year	2023

Additional Features:

Basement: Finished, Partial, Walkout **Fuel:** Natural Gas **Garage:** 1 **Heat:** Forced Air **Sewer:** Private Sewer, Septic System Compliant - Yes
Water: Private, Well **Air Conditioning:** Central Air

Driving Directions:

N on MN 371 to left onto CR 77, continue onto Interlachen Rd, property on the left



Listed By:
Positive Realty

Affinity Real Estate Inc. participates in the Regional Multiple Listing Service of Minnesota, Inc Broker Reciprocity (sm) program, allowing us to display other broker's listings on our website. All properties are subject to prior sale, change or withdrawal.



Call Affinity Real Estate

218-237-3333

info@affinityrealestate.com



Affinity Real Estate - 600 Park Avenue South - Park Rapids MN 56470



website: www.AffinityRealEstate.com | email: info@affinityrealestate.com | office: 218-237-3333 | fax: 218-237-3377

Affinity
REAL ESTATE INC

\$799,000
MLS 6449656 Lake Home
8678 Interlachen Road
Nisswa MN 56468



website: www.AffinityRealEstate.com | email: info@affinityrealestate.com | office: 218-237-3333 | fax:218-237-3377



\$799,000
MLS 6449656 Lake Home
8678 Interlachen Road
Nisswa MN 56468



website: www.AffinityRealEstate.com | email: info@affinityrealestate.com | office: 218-237-3333 | fax:218-237-3377

Affinity
REAL ESTATE INC

\$799,000
MLS 6449656 Lake Home
8678 Interlachen Road
Nisswa MN 56468



website: www.AffinityRealEstate.com | email: info@affinityrealestate.com | office: 218-237-3333 | fax:218-237-3377

Affinity
REAL ESTATE INC

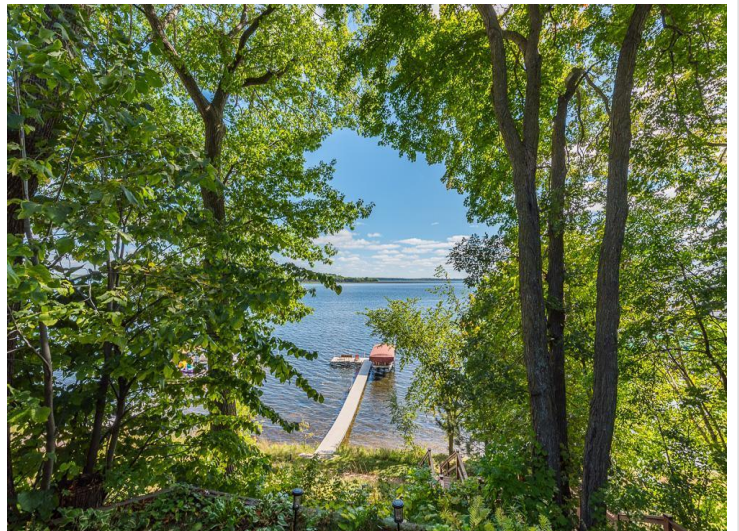
\$799,000
MLS 6449656 Lake Home
8678 Interlachen Road
Nisswa MN 56468



website: www.AffinityRealEstate.com | email: info@affinityrealestate.com | office: 218-237-3333 | fax:218-237-3377



\$799,000
MLS 6449656 Lake Home
8678 Interlachen Road
Nisswa MN 56468



website: www.AffinityRealEstate.com | email: info@affinityrealestate.com | office: 218-237-3333 | fax:218-237-3377

Affinity
REAL ESTATE INC

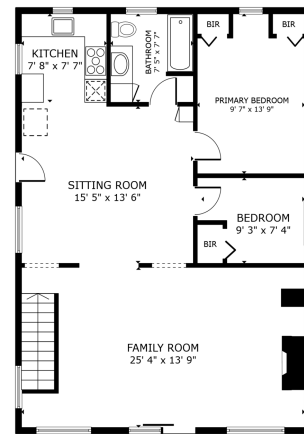
\$799,000
MLS 6449656 Lake Home
8678 Interlachen Road
Nisswa MN 56468



website: www.AffinityRealEstate.com | email: info@affinityrealestate.com | office: 218-237-3333 | fax:218-237-3377



\$799,000
MLS 6449656 Lake Home
8678 Interlachen Road
Nisswa MN 56468



FLOOR 2
 GROSS INTERNAL AREA
 FLOOR 1 234 sq. ft., FLOOR 2 899 sq. ft.
 TOTAL: 1,133 sq. ft.
 SIZES AND DIMENSIONS ARE APPROXIMATE. ACTUAL MAY VARY.



FLOOR 1
 GROSS INTERNAL AREA
 FLOOR 1 234 sq. ft., FLOOR 2 899 sq. ft.
 TOTAL: 1,133 sq. ft.
 SIZES AND DIMENSIONS ARE APPROXIMATE. ACTUAL MAY VARY.



website: www.AffinityRealEstate.com | email: info@affinityrealestate.com | office: 218-237-3333 | fax: 218-237-3377



\$799,000
 MLS 6449656 Lake Home
 8678 Interlachen Road
 Nisswa MN 56468