



MLS 6449777 Residential

\$224,900

2,148 sq ft
2 bedrooms
2 baths

17778 County 23
Verndale MN 56481

Status: Active

Description:

WORK IS ON GOING.....THE PRICE WILL BE INCREASING.....WAITING ON ELECTRICIANS TO FINISH, THEN THE DRY WALL getting close, as work progresses the price WILL INCREASE. The owners bought this property for the land. Splitting the Building site off, needs a good cleaning and paint. SHOP 24 X 30 ,Cold Storage 30 x 32 ,3+ car garage. Well for irrigating garden PLUS irrigation piping.

Additional Details:

Year Built	1972
Lot Acres	9.9
Lot Dimensions	375 x 1150
Garage Stalls	1
School District	818
Taxes	\$2,394
Taxes with Assessments	\$2,394
Tax Year	2023

Additional Features:

Fuel: Electric, Wood **Heat:** Boiler, Forced Air, Radiant Floor, Radiant, Wood Stove

Driving Directions:

From the intersection of US Hwy 10 and Brown Street N in Verndale (County Rd 23) ; North on Brown Street a distance of 5.25 miles, SUBJECT ON YOUR RIGHT.



Listed By:
The Gores Company

Affinity Real Estate Inc. participates in the Regional Multiple Listing Service of Minnesota, Inc Broker Reciprocity (sm) program, allowing us to display other broker's listings on our website. All properties are subject to prior sale, change or withdrawal.



Call Affinity Real Estate

218-237-3333

info@affinityrealestate.com



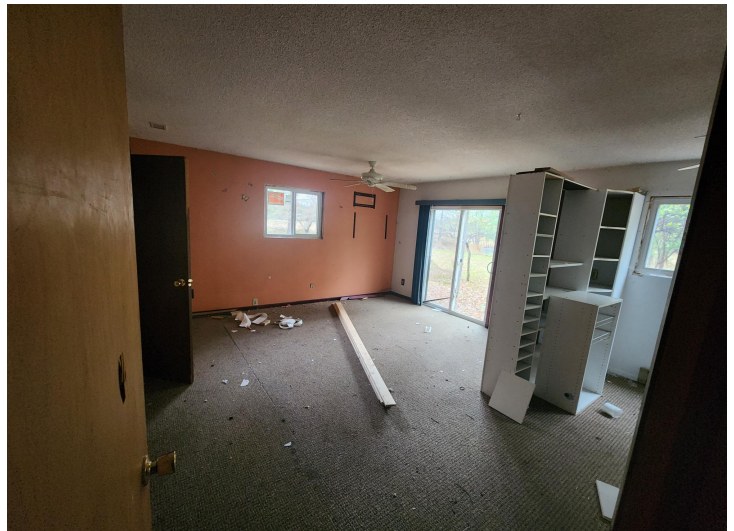
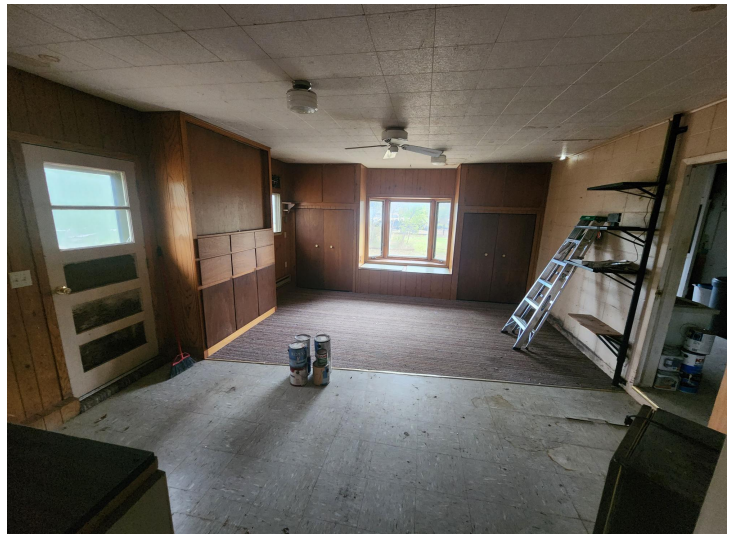
Affinity Real Estate - 600 Park Avenue South - Park Rapids MN 56470



website: www.AffinityRealEstate.com | email: info@affinityrealestate.com | office: 218-237-3333 | fax: 218-237-3377

Affinity
REAL ESTATE INC

\$224,900
MLS 6449777 Residential
17778 County 23
Verndale MN 56481



website: www.AffinityRealEstate.com | email: info@affinityrealestate.com | office: 218-237-3333 | fax: 218-237-3377

Affinity
REAL ESTATE INC

\$224,900
MLS 6449777 Residential
17778 County 23
Verndale MN 56481



website: www.AffinityRealEstate.com | email: info@affinityrealestate.com | office: 218-237-3333 | fax: 218-237-3377



\$224,900
 MLS 6449777 Residential
 17778 County 23
 Verndale MN 56481



website: www.AffinityRealEstate.com | email: info@affinityrealestate.com | office: 218-237-3333 | fax:218-237-3377



\$224,900
MLS 6449777 Residential
17778 County 23
Verndale MN 56481