



MLS 6450125 Land

\$120,000

40 Acres
Raw Land

TBD Kueber RD
Park Rapids MN 56470

Status: Hold

Description:

Nice Prime 40-acre hunting parcel with plenty of state land around it. Nice trails on the property.

Additional Details:

Lot Acres	40
Lot Dimensions	1320 x 1320
School District	309
Taxes	\$588
Taxes with Assessments	\$588
Tax Year	2023

Additional Features:

Driving Directions:

From Park Rapids North on Hwy 71 To county RD 127 to Kueber RD



Listed By:
Hinkle Realty

Affinity Real Estate Inc. participates in the Regional Multiple Listing Service of Minnesota, Inc Broker Reciprocity (sm) program, allowing us to display other broker's listings on our website. All properties are subject to prior sale, change or withdrawal.



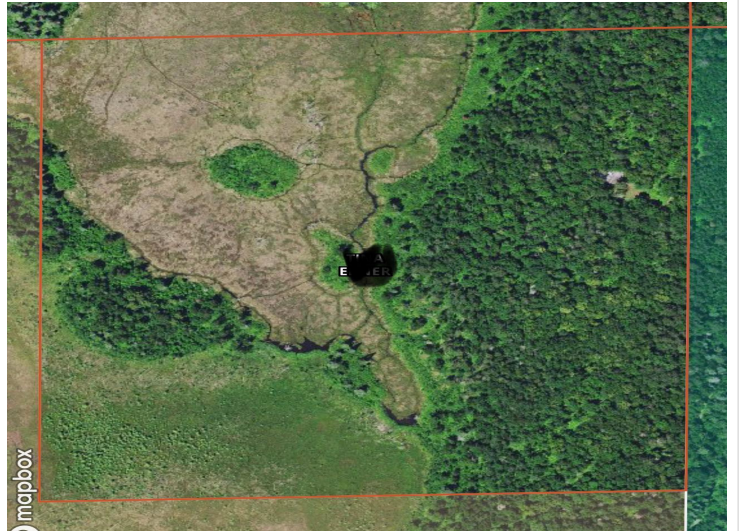
Call Affinity Real Estate

218-237-3333

info@affinityrealestate.com



Affinity Real Estate - 600 Park Avenue South - Park Rapids MN 56470



website: www.AffinityRealEstate.com | email: info@affinityrealestate.com | office: 218-237-3333 | fax:218-237-3377



\$120,000
MLS 6450125 Land
TBD Kueber RD
Park Rapids MN 56470