



MLS 6450290 Land

\$69,900

11.9 Acres

Raw Land

TBD 39th Street
Akeley MN 56433

Status: Closed

Description:

Heavily wooded high-ground lot that is across the street from Crystal Lake. 300' of frontage on the public street near the end of the road. North side of the property adjoins county land and ski trails - a snowmobile trail is also nearby. Nice home site or beautiful woods to enjoy/ Easy access to hunting, hiking, cross-country skiing and snowmobile trails. Located midway between Akeley and Hackensack and close to Ten Mile lake public access as well. Welcome home to your retreat in the woods!

Additional Details:

Lot Acres	11.9
Lot Dimensions	300 x 1718.12 x 300 x 1734.64
School District	113
Taxes	\$211
Taxes with Assessments	\$211
Tax Year	2023

Additional Features:

Driving Directions:

From Hackensack, take County Rd 6 to south turn on 72nd Ave NW, right on 39th St NW. Property is just north, across the road from Crystal Lake.



Listed By:
Bill Hansen Realty/Walker

Affinity Real Estate Inc. participates in the Regional Multiple Listing Service of Minnesota, Inc Broker Reciprocity (sm) program, allowing us to display other broker's listings on our website. All properties are subject to prior sale, change or withdrawal.



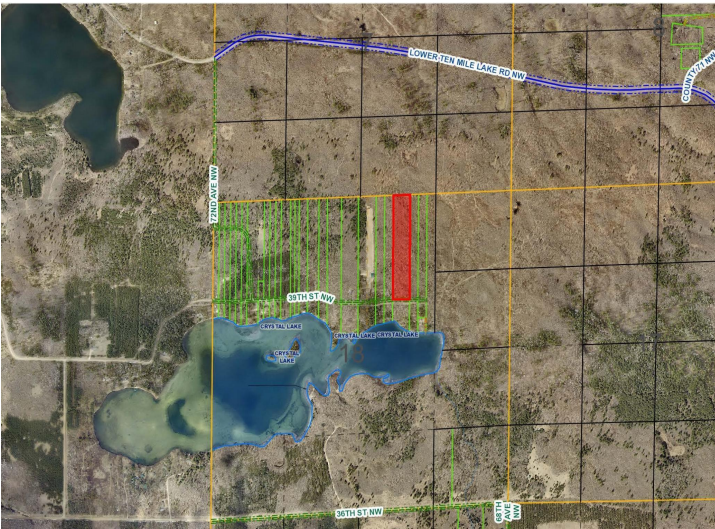
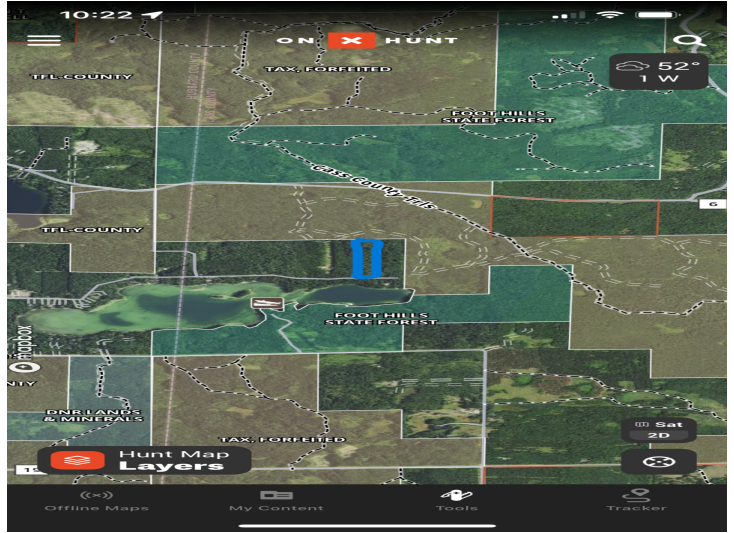
Call Affinity Real Estate

218-237-3333

info@affinityrealestate.com



Affinity Real Estate - 600 Park Avenue South - Park Rapids MN 56470



website: www.AffinityRealEstate.com | email: info@affinityrealestate.com | office: 218-237-3333 | fax: 218-237-3377



\$69,900
 MLS 6450290 Land
 TBD 39th Street
 Akeley MN 56433