



MLS 6450447 Lake Land

**\$269,000**

**Description:**

Nice level lot on Big Pine Lake with a great sunset view. This lot is in a newer developed area with beautiful homes & scenic views. Featuring 100 feet of frontage & just over an acre on premier Big Pine and within 10 minutes of Perham. Build your dream home here on this mostly level lot with maybe 10 steps to the lake. Big Pine Lake is a great fishing & good recreational lake with over 4700 acres. Convenient & beautiful. Covenants apply, call today!

**Additional Details:**

Lot Acres	1.01
Lot Dimensions	100x373x130x373
School District	542
Taxes	\$1,586
Taxes with Assessments	\$1,586
Tax Year	2024

**Additional Features:**

**Driving Directions:**

From Perham N on Co Hwy 8, right on Nitche Lake Rd, property on the right.



Listed By:  
Real Estate Results

Affinity Real Estate Inc. participates in the Regional Multiple Listing Service of Minnesota, Inc Broker Reciprocity (sm) program, allowing us to display other broker's listings on our website. All properties are subject to prior sale, change or withdrawal.



**Call Affinity Real Estate**

**218-237-3333**

**info@affinityrealestate.com**



**Affinity Real Estate - 600 Park Avenue South - Park Rapids MN 56470**



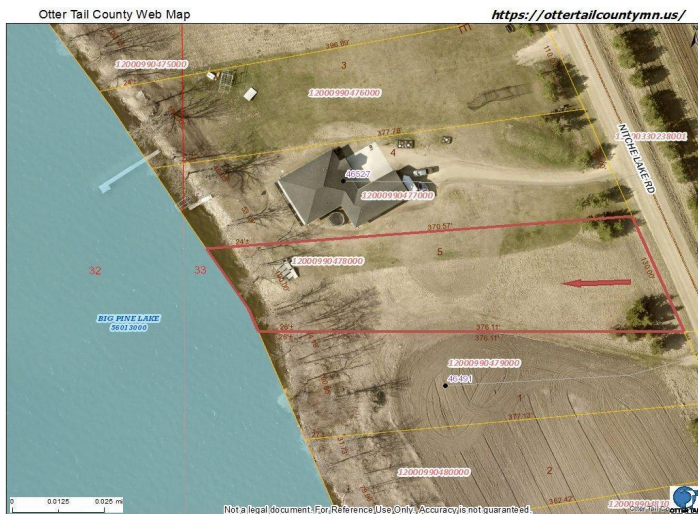


website: [www.AffinityRealEstate.com](http://www.AffinityRealEstate.com) | email: [info@affinityrealestate.com](mailto:info@affinityrealestate.com) | office: 218-237-3333 | fax: 218-237-3377



**\$269,000**  
 MLS 6450447 Lake Land  
 46xxx Nitche Lake Road  
 Perham MN 56573





website: [www.AffinityRealEstate.com](http://www.AffinityRealEstate.com) | email: [info@affinityrealestate.com](mailto:info@affinityrealestate.com) | office: 218-237-3333 | fax: 218-237-3377



**\$269,000**  
 MLS 6450447 Lake Land  
 46xxx Nitch Lake Road  
 Perham MN 56573





website: [www.AffinityRealEstate.com](http://www.AffinityRealEstate.com) | email: [info@affinityrealestate.com](mailto:info@affinityrealestate.com) | office: 218-237-3333 | fax: 218-237-3377



**\$269,000**

MLS 6450447 Lake Land  
46xxx Nitche Lake Road  
Perham MN 56573