



MLS 6451849 Residential

\$164,900

1,832 sq ft
2 bedrooms
2 baths

423 4th Street
Cass Lake MN 56633

Status: Active

Description:

This listing is located in the heart of Cass Lake, minutes to the best of everything the area offers. Outside you will find a nice yard, garden space, a double attached garage, and a 24x50 second garage! Inside you will find many mid-century touches including original cabinets, and stone fireplace with a gas insert. Two beds, a full bath, spacious rooms, and tons of storage. Downstairs there is a new water heater, and a new natural gas furnace, plus a 3/4 bath!

Additional Details:

Year Built	1959
Lot Acres	0.04
Lot Dimensions	140x125
Garage Stalls	4
School District	115
Taxes	\$1,564
Taxes with Assessments	\$1,630
Tax Year	2023

Additional Features:

Basement: Block, Partial, Partially Finished, Sump Pump **Fuel:** Natural Gas **Garage:** 4 **Heat:** Forced Air, Fireplace(s) **Sewer:** City Sewer/Connected **Water:** City Water/Connected **Air Conditioning:** Central Air

Driving Directions:

Follow HWY 2 to Cass Lake Mn, Take follow 371 to 4th st, go left and follow to address.



Listed By:
RE/MAX Bemidji

Affinity Real Estate Inc. participates in the Regional Multiple Listing Service of Minnesota, Inc Broker Reciprocity (sm) program, allowing us to display other broker's listings on our website. All properties are subject to prior sale, change or withdrawal.



Call Affinity Real Estate

218-237-3333

info@affinityrealestate.com



Affinity Real Estate - 600 Park Avenue South - Park Rapids MN 56470



website: www.AffinityRealEstate.com | email: info@affinityrealestate.com | office: 218-237-3333 | fax: 218-237-3377



\$164,900
 MLS 6451849 Residential
 423 4th Street
 Cass Lake MN 56633



website: www.AffinityRealEstate.com | email: info@affinityrealestate.com | office: 218-237-3333 | fax: 218-237-3377



\$164,900
 MLS 6451849 Residential
 423 4th Street
 Cass Lake MN 56633



website: www.AffinityRealEstate.com | email: info@affinityrealestate.com | office: 218-237-3333 | fax: 218-237-3377



\$164,900
 MLS 6451849 Residential
 423 4th Street
 Cass Lake MN 56633



website: www.AffinityRealEstate.com | email: info@affinityrealestate.com | office: 218-237-3333 | fax: 218-237-3377

Affinity
REAL ESTATE INC

\$164,900
MLS 6451849 Residential
423 4th Street
Cass Lake MN 56633



website: www.AffinityRealEstate.com | email: info@affinityrealestate.com | office: 218-237-3333 | fax: 218-237-3377



\$164,900
 MLS 6451849 Residential
 423 4th Street
 Cass Lake MN 56633



website: www.AffinityRealEstate.com | email: info@affinityrealestate.com | office: 218-237-3333 | fax: 218-237-3377

Affinity
REAL ESTATE INC

\$164,900
MLS 6451849 Residential
423 4th Street
Cass Lake MN 56633



website: www.AffinityRealEstate.com | email: info@affinityrealestate.com | office: 218-237-3333 | fax: 218-237-3377

Affinity
REAL ESTATE INC

\$164,900
MLS 6451849 Residential
423 4th Street
Cass Lake MN 56633



website: www.AffinityRealEstate.com | email: info@affinityrealestate.com | office: 218-237-3333 | fax: 218-237-3377

Affinity
REAL ESTATE INC

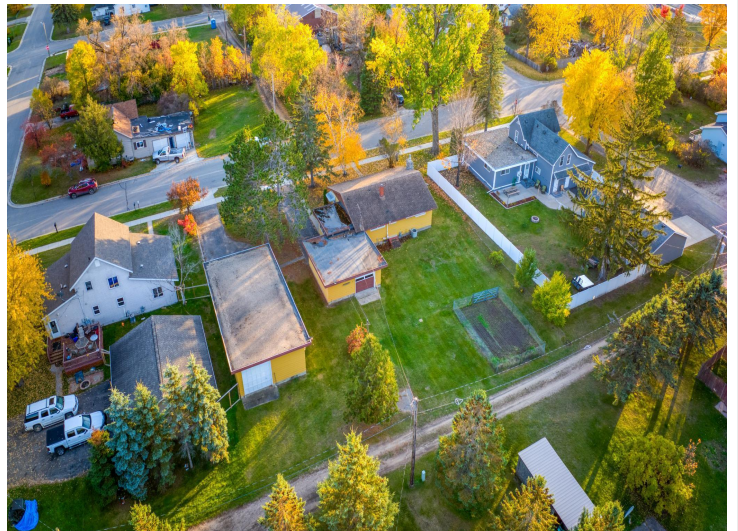
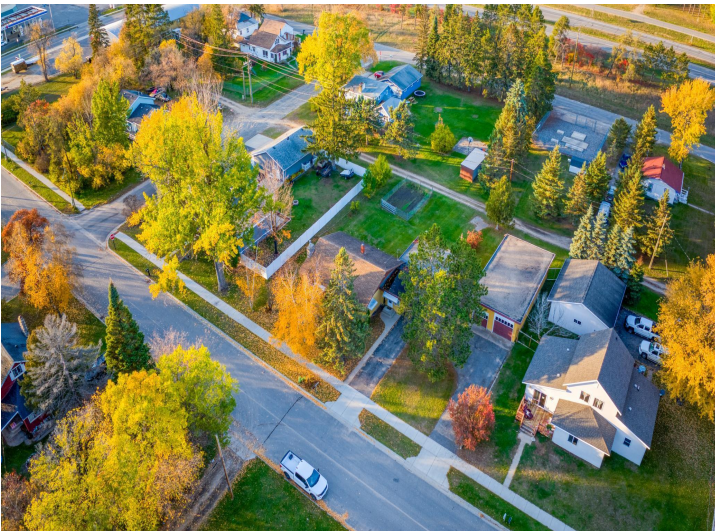
\$164,900
MLS 6451849 Residential
423 4th Street
Cass Lake MN 56633



website: www.AffinityRealEstate.com | email: info@affinityrealestate.com | office: 218-237-3333 | fax: 218-237-3377



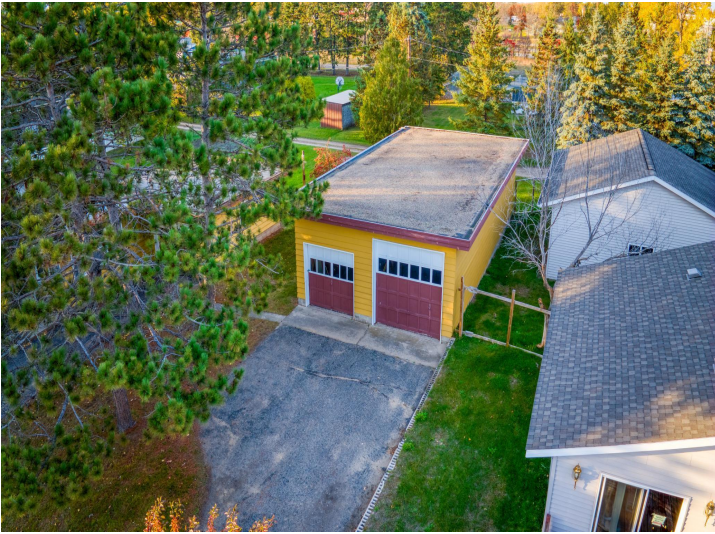
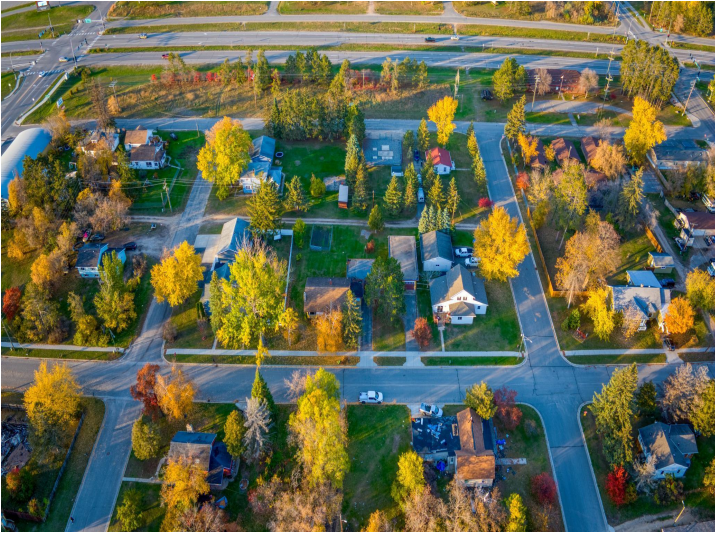
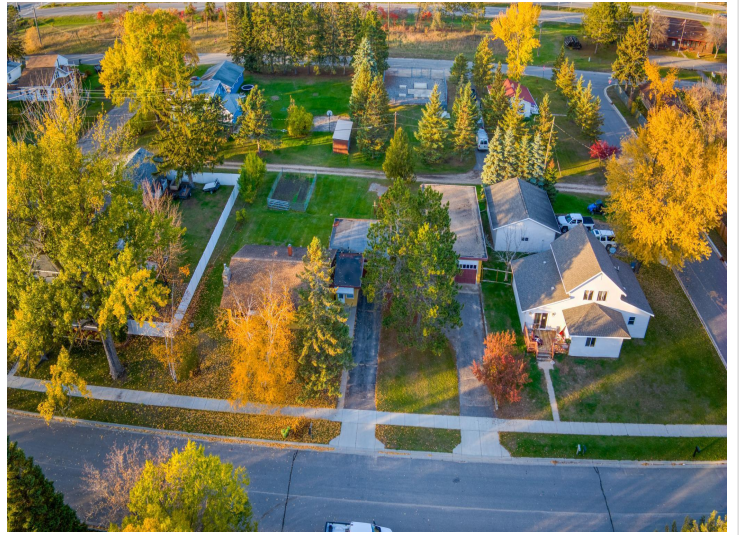
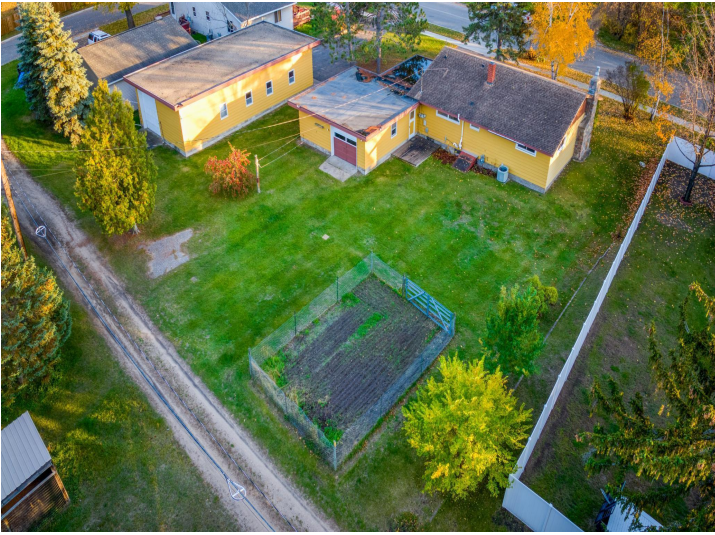
\$164,900
 MLS 6451849 Residential
 423 4th Street
 Cass Lake MN 56633



website: www.AffinityRealEstate.com | email: info@affinityrealestate.com | office: 218-237-3333 | fax: 218-237-3377



\$164,900
 MLS 6451849 Residential
 423 4th Street
 Cass Lake MN 56633



website: www.AffinityRealEstate.com | email: info@affinityrealestate.com | office: 218-237-3333 | fax: 218-237-3377

Affinity
REAL ESTATE INC

\$164,900
MLS 6451849 Residential
423 4th Street
Cass Lake MN 56633



website: www.AffinityRealEstate.com | email: info@affinityrealestate.com | office: 218-237-3333 | fax: 218-237-3377



\$164,900
MLS 6451849 Residential
423 4th Street
Cass Lake MN 56633