



MLS 6452771 Land

\$49,900

0.39 Acres
Subdivided

L4B1 Gopher Trail
Pequot Lakes MN 56472

Status: Active

Description:

Check out the Lakes Area's Newest Residential Storage Park! Conveniently Located Between Hwy 371 and the Whitefish Chain You Will Find The Jenkins Storage Park! This Prime Location & Generous Sized Level Lots, Coupled with 40% Impervious Coverage Allowance, Offer The Perfect Spot to Build the Storage Building For Lake Toys/Classic Cars/Personal Storage You've Always Needed! Basic Covenants Are In Place to Help Protect Your Investment! Call Today And Learn More About This Great Opportunity!

Additional Details:

Lot Acres	0.39
Lot Dimensions	118x145
School District	186
Taxes	(unreported)
Taxes with Assessments	(unreported)
Tax Year	2023

Additional Features:

Driving Directions:

From Jenkins/HWY 371- East on CR 15 approx 1.2 miles to development on Left- Fire# 35323



Listed By:
Positive Realty

Affinity Real Estate Inc. participates in the Regional Multiple Listing Service of Minnesota, Inc Broker Reciprocity (sm) program, allowing us to display other broker's listings on our website. All properties are subject to prior sale, change or withdrawal.



Call Affinity Real Estate

218-237-3333

info@affinityrealestate.com



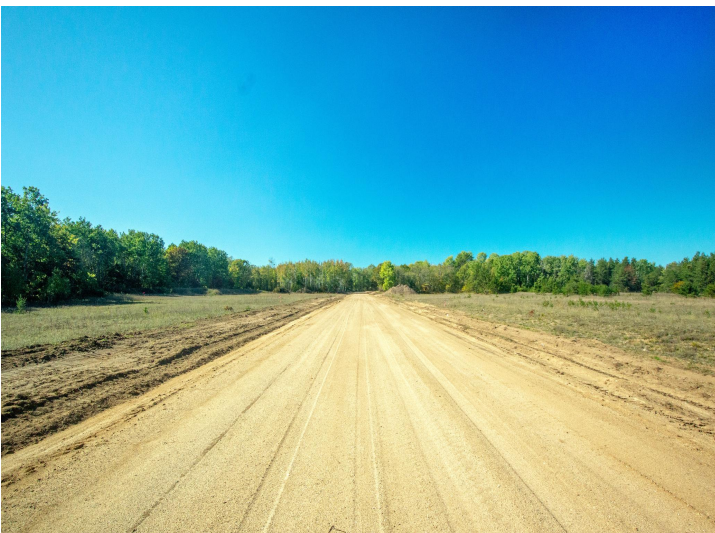
Affinity Real Estate - 600 Park Avenue South - Park Rapids MN 56470



website: www.AffinityRealEstate.com | email: info@affinityrealestate.com | office: 218-237-3333 | fax: 218-237-3377



\$49,900
 MLS 6452771 Land
 L4B1 Gopher Trail
 Pequot Lakes MN 56472



website: www.AffinityRealEstate.com | email: info@affinityrealestate.com | office: 218-237-3333 | fax: 218-237-3377



\$49,900
 MLS 6452771 Land
 L4B1 Gopher Trail
 Pequot Lakes MN 56472



website: www.AffinityRealEstate.com | email: info@affinityrealestate.com | office: 218-237-3333 | fax: 218-237-3377



\$49,900
MLS 6452771 Land
L4B1 Gopher Trail
Pequot Lakes MN 56472