



MLS 6453223 Commercial Sale

**\$3,766**



**Description:**

Sharp looking office with excellent shop space for lease in Bemidji's Industrial Park. Previously used as a woodworking shop, building features entry/showroom space with 2 offices and a break room. Approx 3600sf of shop space with 16w x 10h overhead door. In floor heat for consistent heat. Building is fully sprinkled.

**Additional Details:**

Year Built	2006
Lot Acres	2.13
Lot Dimensions	256x355
Garage Stalls	1
School District	31
Taxes	\$7,316
Taxes with Assessments	\$7,316
Tax Year	2024

**Additional Features:**

**Fuel:** Natural Gas **Garage:** 1 **Heat:** Radiant Floor **Sewer:** City Sewer/Connected **Water:** City Water/Connected

**Driving Directions:**

East on Carr Lake Road SE from Hwy 197, Left on Naylor Drive SE to property on right.



Listed By:  
Lake-N-Woods Realty

Affinity Real Estate Inc. participates in the Regional Multiple Listing Service of Minnesota, Inc Broker Reciprocity (sm) program, allowing us to display other broker's listings on our website. All properties are subject to prior sale, change or withdrawal.



**Call Affinity Real Estate**

**218-237-3333**

**info@affinityrealestate.com**



**Affinity Real Estate - 600 Park Avenue South - Park Rapids MN 56470**



website: [www.AffinityRealEstate.com](http://www.AffinityRealEstate.com) | email: [info@affinityrealestate.com](mailto:info@affinityrealestate.com) | office: 218-237-3333 | fax:218-237-3377



**\$3,766**  
MLS 6453223 Commercial  
Sale  
1407 Naylor Drive  
Bemidji MN 56601

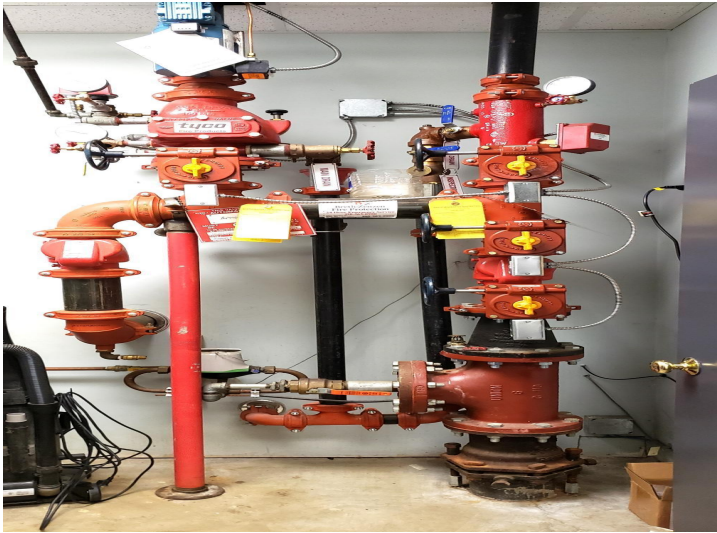




website: [www.AffinityRealEstate.com](http://www.AffinityRealEstate.com) | email: [info@affinityrealestate.com](mailto:info@affinityrealestate.com) | office: 218-237-3333 | fax:218-237-3377



**\$3,766**  
MLS 6453223 Commercial  
Sale  
1407 Naylor Drive  
Bemidji MN 56601



website: [www.AffinityRealEstate.com](http://www.AffinityRealEstate.com) | email: [info@affinityrealestate.com](mailto:info@affinityrealestate.com) | office: 218-237-3333 | fax:218-237-3377



**\$3,766**  
MLS 6453223 Commercial  
Sale  
1407 Naylor Drive  
Bemidji MN 56601