



MLS 6453385 Residential

\$369,900

1,538 sq ft
2 bedrooms
2 baths

1615 30th Street
Bemidji MN 56601

Status: Active

Description:

All the benefits of living in a townhome without the shared walls! This North Ridge Cottages townhome features an open floor plan, vaulted ceilings, in-floor heat, on-demand hot water, large primary suite, and a sun room. In the kitchen you'll find plenty of cabinet space, solid surface countertops, a gas stove and a breakfast bar. Includes a back patio, a finished heated attached garage and a concrete driveway. Included in the association you'll have access to the common unit that has an exercise room, a kitchenette and a bathroom. All this conveniently located within minutes to shopping, groceries, and health care!

Additional Details:

Year Built	2021
Lot Acres	0.04
Lot Dimensions	43x46
Garage Stalls	2
School District	31
Taxes	\$3,356
Taxes with Assessments	\$3,356
Tax Year	2023

Additional Features:

Basement: Slab **Fuel:** Electric, Natural Gas **Garage:** 2 **Heat:** Ductless Mini-Split, Radiant Floor **Sewer:** City Sewer/Connected **Water:** City Water/Connected **Air Conditioning:** Ductless Mini-Split

Driving Directions:

30th St between Hannah Ave and Pine Ridge Ave



Listed By:
218 Real Estate

Affinity Real Estate Inc. participates in the Regional Multiple Listing Service of Minnesota, Inc Broker Reciprocity (sm) program, allowing us to display other broker's listings on our website. All properties are subject to prior sale, change or withdrawal.



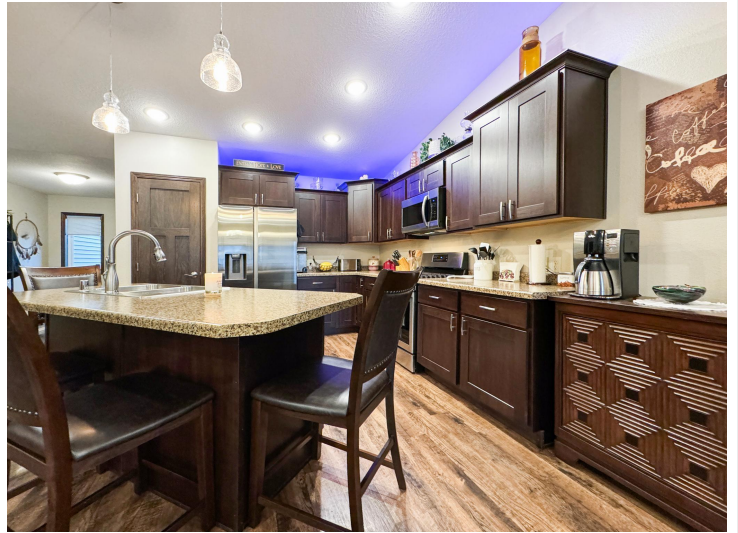
Call Affinity Real Estate

218-237-3333

info@affinityrealestate.com



Affinity Real Estate - 600 Park Avenue South - Park Rapids MN 56470



website: www.AffinityRealEstate.com | email: info@affinityrealestate.com | office: 218-237-3333 | fax: 218-237-3377

Affinity
REAL ESTATE INC

\$369,900
MLS 6453385 Residential
1615 30th Street
Bemidji MN 56601



website: www.AffinityRealEstate.com | email: info@affinityrealestate.com | office: 218-237-3333 | fax: 218-237-3377

Affinity
REAL ESTATE INC

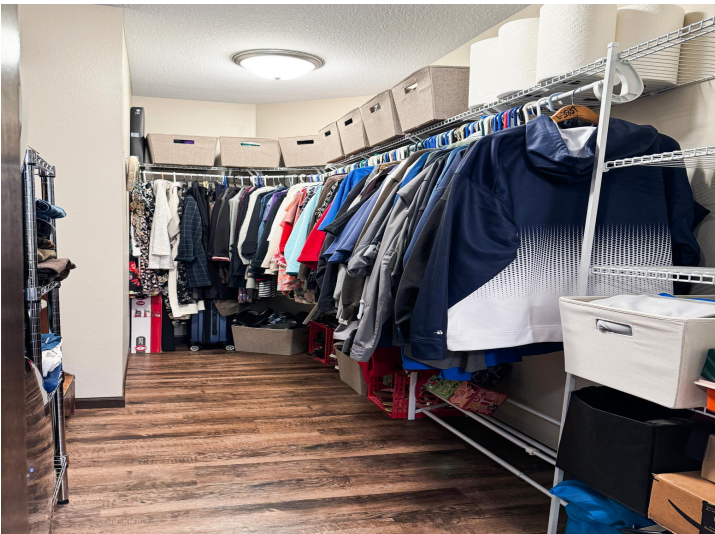
\$369,900
MLS 6453385 Residential
1615 30th Street
Bemidji MN 56601



website: www.AffinityRealEstate.com | email: info@affinityrealestate.com | office: 218-237-3333 | fax: 218-237-3377

Affinity
REAL ESTATE INC

\$369,900
MLS 6453385 Residential
1615 30th Street
Bemidji MN 56601



website: www.AffinityRealEstate.com | email: info@affinityrealestate.com | office: 218-237-3333 | fax: 218-237-3377

Affinity
REAL ESTATE INC

\$369,900
MLS 6453385 Residential
1615 30th Street
Bemidji MN 56601



website: www.AffinityRealEstate.com | email: info@affinityrealestate.com | office: 218-237-3333 | fax: 218-237-3377

Affinity
REAL ESTATE INC

\$369,900
MLS 6453385 Residential
1615 30th Street
Bemidji MN 56601



website: www.AffinityRealEstate.com | email: info@affinityrealestate.com | office: 218-237-3333 | fax: 218-237-3377



\$369,900
 MLS 6453385 Residential
 1615 30th Street
 Bemidji MN 56601



website: www.AffinityRealEstate.com | email: info@affinityrealestate.com | office: 218-237-3333 | fax: 218-237-3377



\$369,900
MLS 6453385 Residential
1615 30th Street
Bemidji MN 56601