

GATEWAY 34



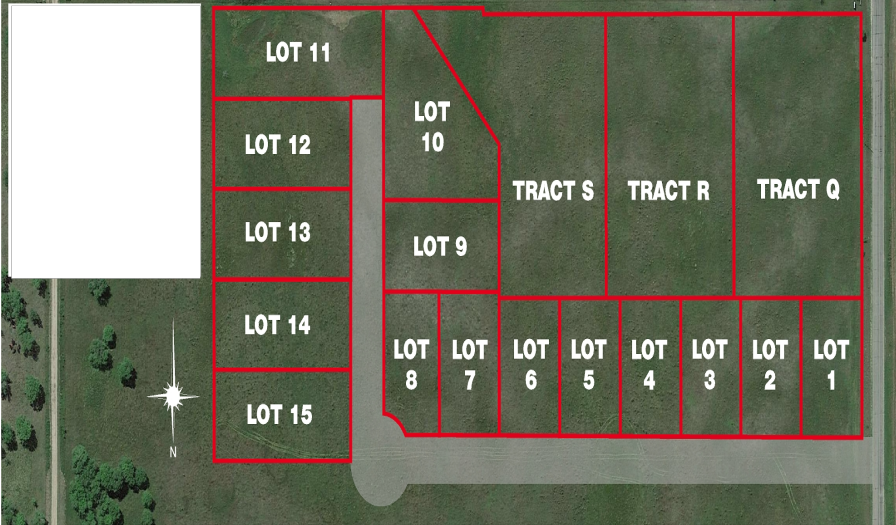
MLS 6454854 Land

\$31,000

0.99 Square Feet
Subdivided

Lot 10 400 Ave
Perham MN 56309

Status: Active



Description:

Lot 10 has been leveled. More room to expand if needed. This is a large lot. Build the Recreational Storage Building you have always wanted.

Additional Details:

Lot Acres	0.99
Lot Dimensions	229x135
School District	549
Taxes	\$12
Taxes with Assessments	\$12
Tax Year	2023

Additional Features:

Driving Directions:

Hwy 34 West of Perham to 400th Ave



Listed By:
New Horizons Realty of Perham

Affinity Real Estate Inc. participates in the Regional Multiple Listing Service of Minnesota, Inc Broker Reciprocity (sm) program, allowing us to display other broker's listings on our website. All properties are subject to prior sale, change or withdrawal.



Call Affinity Real Estate

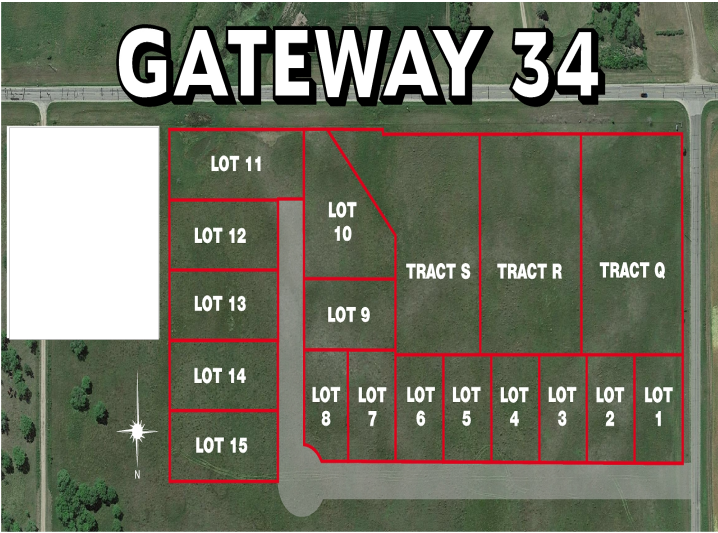
218-237-3333

info@affinityrealestate.com



Affinity Real Estate - 600 Park Avenue South - Park Rapids MN 56470

GATEWAY 34



website: www.AffinityRealEstate.com | email: info@affinityrealestate.com | office: 218-237-3333 | fax:218-237-3377



\$31,000
MLS 6454854 Land
Lot 10 400 Ave
Perham MN 56309