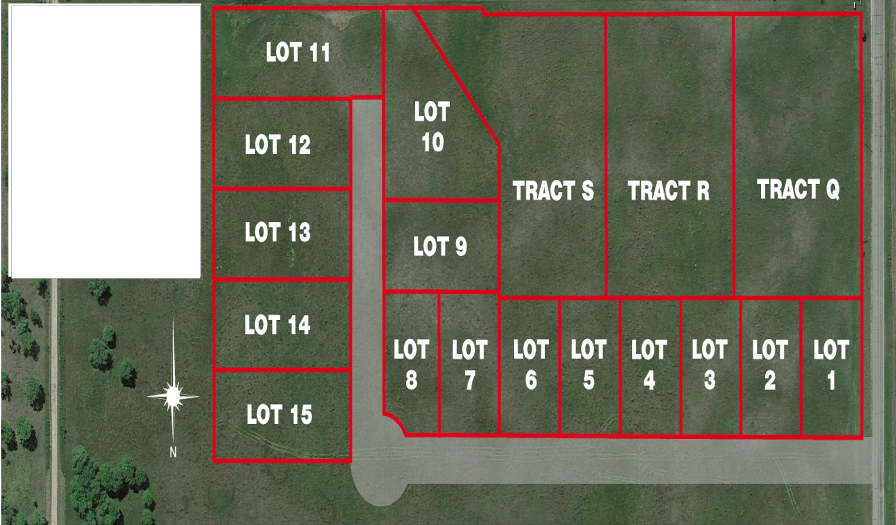


GATEWAY 34



MLS 6454860 Land

\$32,500

0.93 Square Feet
Subdivided

Lot 11 400 Ave
Perham MN 56573

Status: Active

Description:

Lot 11 Recreational Storage Lot. End of Culdesac. New Tarred Road. Lot has been leveled and is ready to build on.

Additional Details:

Lot Acres	0.93
Lot Dimensions	271x120
School District	549
Taxes	\$36
Taxes with Assessments	\$36
Tax Year	2023

Additional Features:

Driving Directions:

Hwy 34 West of Perham to 400th Ave



Listed By:
New Horizons Realty Of Perham

Affinity Real Estate Inc. participates in the Regional Multiple Listing Service of Minnesota, Inc Broker Reciprocity (sm) program, allowing us to display other broker's listings on our website. All properties are subject to prior sale, change or withdrawal.



Call Affinity Real Estate

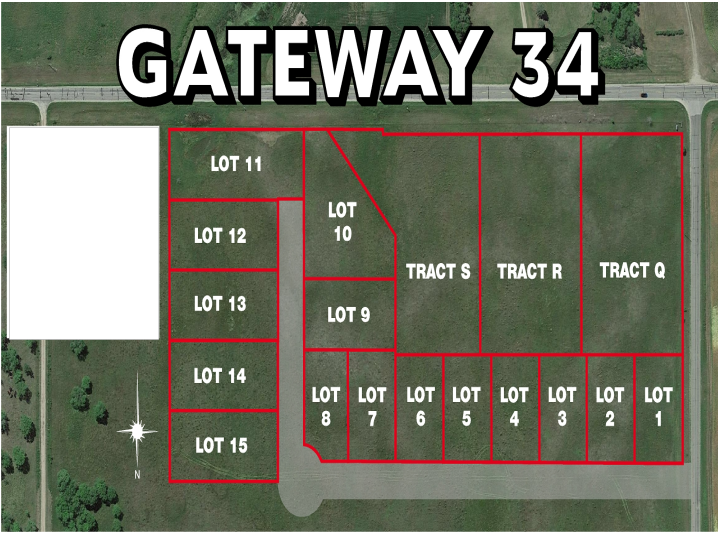
218-237-3333

info@affinityrealestate.com



Affinity Real Estate - 600 Park Avenue South - Park Rapids MN 56470

GATEWAY 34



website: www.AffinityRealEstate.com | email: info@affinityrealestate.com | office: 218-237-3333 | fax:218-237-3377



\$32,500
MLS 6454860 Land
Lot 11 400 Ave
Perham MN 56573