



MLS 6454867 Lake Home

\$750,000

4,028 sq ft
5 bedrooms
4 baths

35742 Angle Lane
Park Rapids MN 56470

Waterfront: Boot Lake (03003000)

Status: Closed

Description:

Looking for that up-north family retreat, look no further! Completely renovated year-round 5 bed, 4 bath, vacation home nestled in a quiet cul-de-sac setting with gradual elevation to 150' of crystal clear Boot Lake. This home boasts of quality throughout with an open concept and plenty of room for large family gatherings. Features include rock fireplace, in-floor heat, walkouts to the upper and lower decks, hickory cabinets, lg pantry, center island, spacious dining area, forced/central air for year-round comfort. There is an attached double garage and a 30x70 shed with in-floor heat and great for family fun and great storage. Snowmobile and ATV trails are close by. If you are thinking you would like a little more acreage and space, check out the newer home (MLS 6454560) in the same cul-de-sac with 11 ac of meadow and woods, which would complement this offering. This lake home has way too many features to list and it is an absolute must see property and sure to impress!

Additional Details:

| | |
|------------------------|-----------------|
| Year Built | 1999 |
| Lot Acres | 0.94 |
| Lot Dimensions | 153x345x180x345 |
| Garage Stalls | 2 |
| School District | 309 |
| Taxes | \$2,818 |
| Taxes with Assessments | \$2,878 |
| Tax Year | 2023 |

Additional Features:

Fuel: Electric, Propane **Heat:** Dual, Forced Air, Fireplace(s), Hot Water, Radiant Floor

Driving Directions:

From 34/71 in Park Rapids go North on 71 approx 14 miles to a left on County 42 (Boot Lake Drive), continue 6 miles and take a left onto East Boot Lake Road continue to Spruce Grove and turn right and then a left to #35742



Listed By:
Affinity Real Estate Inc.

Affinity Real Estate Inc. participates in the Regional Multiple Listing Service of Minnesota, Inc Broker Reciprocity (sm) program, allowing us to display other broker's listings on our website. All properties are subject to prior sale, change or withdrawal.



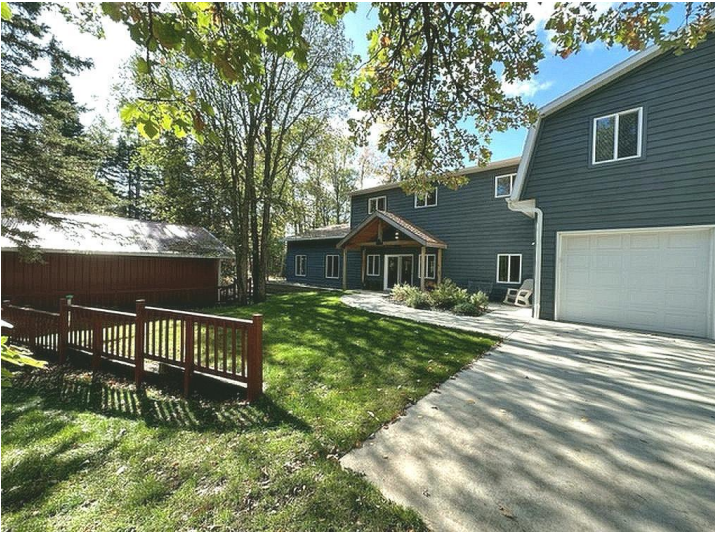
Call Affinity Real Estate

218-237-3333

info@affinityrealestate.com



Affinity Real Estate - 600 Park Avenue South - Park Rapids MN 56470

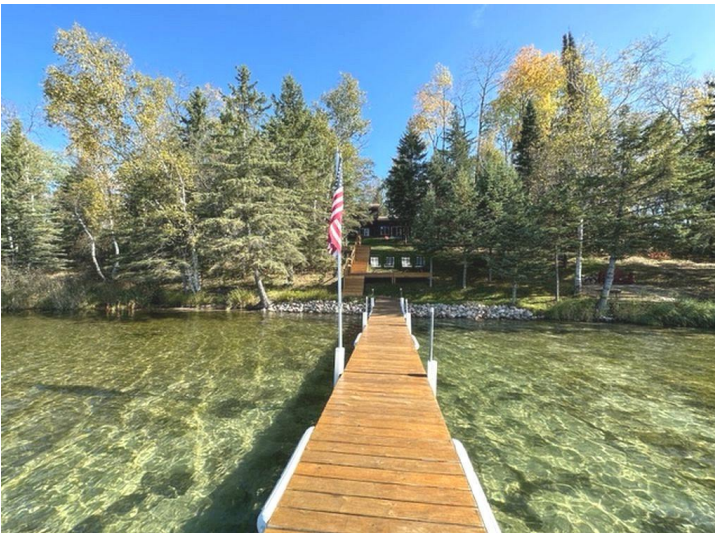
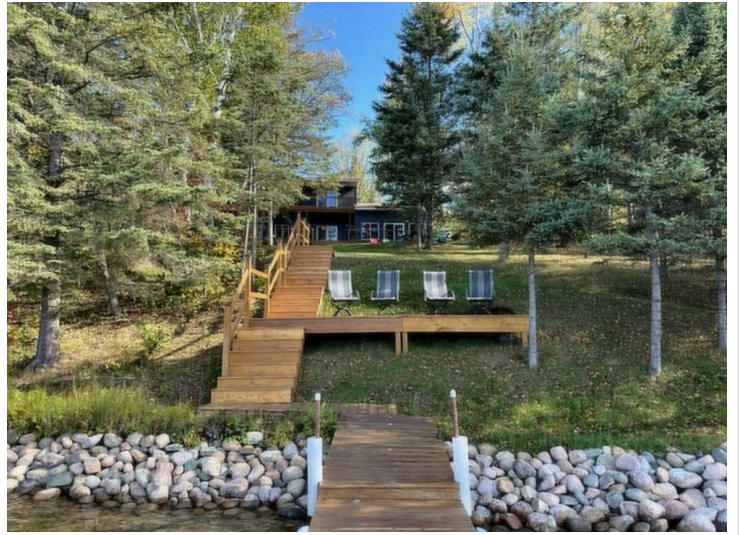


website: www.AffinityRealEstate.com | email: info@affinityrealestate.com | office: 218-237-3333 | fax: 218-237-3377

Affinity
REAL ESTATE INC

\$750,000

MLS 6454867 Lake Home
35742 Angle Lane
Park Rapids MN 56470



website: www.AffinityRealEstate.com | email: info@affinityrealestate.com | office: 218-237-3333 | fax: 218-237-3377



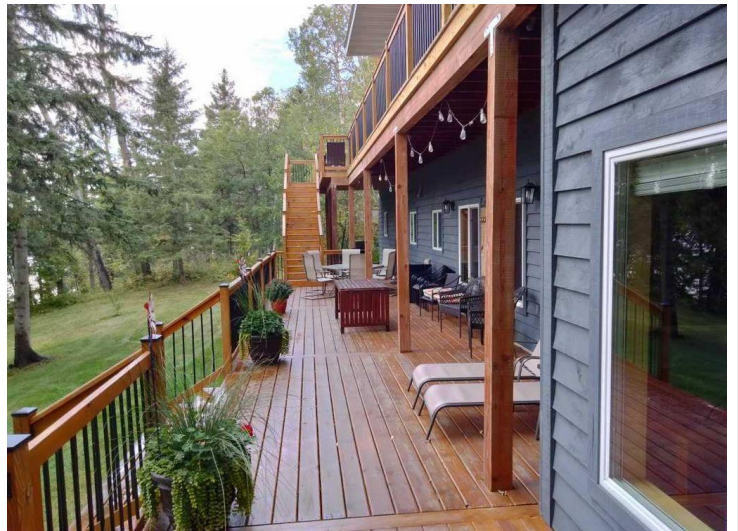
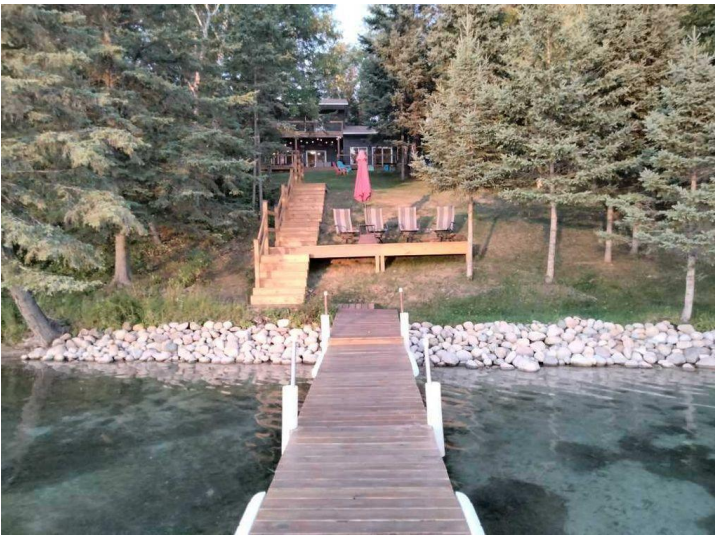
\$750,000
MLS 6454867 Lake Home
35742 Angle Lane
Park Rapids MN 56470



website: www.AffinityRealEstate.com | email: info@affinityrealestate.com | office: 218-237-3333 | fax: 218-237-3377



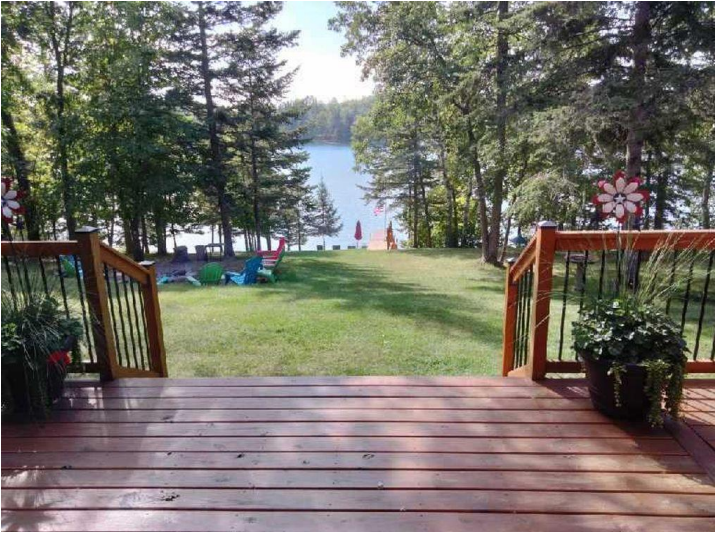
\$750,000
MLS 6454867 Lake Home
35742 Angle Lane
Park Rapids MN 56470



website: www.AffinityRealEstate.com | email: info@affinityrealestate.com | office: 218-237-3333 | fax: 218-237-3377



\$750,000
 MLS 6454867 Lake Home
 35742 Angle Lane
 Park Rapids MN 56470



website: www.AffinityRealEstate.com | email: info@affinityrealestate.com | office: 218-237-3333 | fax: 218-237-3377

Affinity
REAL ESTATE INC

\$750,000

MLS 6454867 Lake Home
35742 Angle Lane
Park Rapids MN 56470



website: www.AffinityRealEstate.com | email: info@affinityrealestate.com | office: 218-237-3333 | fax: 218-237-3377

Affinity
REAL ESTATE INC

\$750,000
MLS 6454867 Lake Home
35742 Angle Lane
Park Rapids MN 56470



website: www.AffinityRealEstate.com | email: info@affinityrealestate.com | office: 218-237-3333 | fax: 218-237-3377

Affinity
REAL ESTATE INC

\$750,000
MLS 6454867 Lake Home
35742 Angle Lane
Park Rapids MN 56470



website: www.AffinityRealEstate.com | email: info@affinityrealestate.com | office: 218-237-3333 | fax: 218-237-3377

Affinity
REAL ESTATE INC

\$750,000
MLS 6454867 Lake Home
35742 Angle Lane
Park Rapids MN 56470



website: www.AffinityRealEstate.com | email: info@affinityrealestate.com | office: 218-237-3333 | fax: 218-237-3377

Affinity
REAL ESTATE INC

\$750,000
MLS 6454867 Lake Home
35742 Angle Lane
Park Rapids MN 56470



website: www.AffinityRealEstate.com | email: info@affinityrealestate.com | office: 218-237-3333 | fax: 218-237-3377

Affinity
REAL ESTATE INC

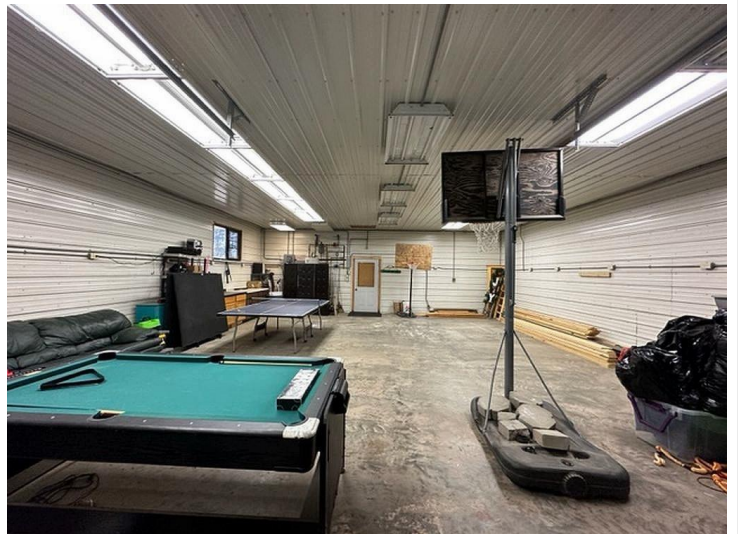
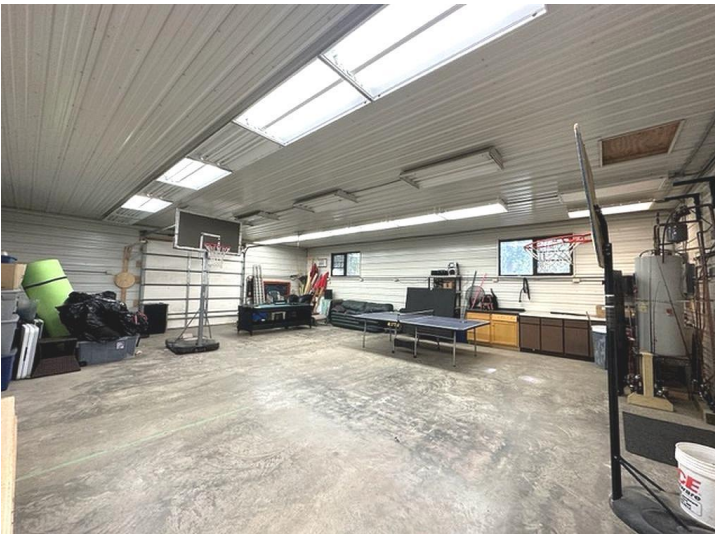
\$750,000
MLS 6454867 Lake Home
35742 Angle Lane
Park Rapids MN 56470



website: www.AffinityRealEstate.com | email: info@affinityrealestate.com | office: 218-237-3333 | fax: 218-237-3377

Affinity
REAL ESTATE INC

\$750,000
MLS 6454867 Lake Home
35742 Angle Lane
Park Rapids MN 56470



website: www.AffinityRealEstate.com | email: info@affinityrealestate.com | office: 218-237-3333 | fax: 218-237-3377

Affinity
REAL ESTATE INC

\$750,000
MLS 6454867 Lake Home
35742 Angle Lane
Park Rapids MN 56470



website: www.AffinityRealEstate.com | email: info@affinityrealestate.com | office: 218-237-3333 | fax: 218-237-3377



\$750,000
 MLS 6454867 Lake Home
 35742 Angle Lane
 Park Rapids MN 56470