



MLS 6454954 Lake Home

\$649,000

1,738 sq ft
3 bedrooms
2 baths

TBD Lost Lake Road
Nisswa MN 56468

Waterfront: Spider Lake (Lake
Shore City)

Status: Canceled

Description:

Spider Lake Preserve on the Gull Lake Chain is now open for building. Two homes are under construction and one is viewable at 8038 Lost Lake Rd #120. 2 lots are spoken for, another is reserved which leaves 6 lots for consideration. This community is a small & private single-family lake home community in the City of Lake Shore. This 35-acre community is nestled amongst Lost Lake Lodge, Causeway on Gull, Bar Harbor, Zorbaz, golf courses, and so much more. This private community has its own dock area, lake side patio and firepit area, pickleball court, private crushed granite path system and fine homes built by Thomas Allen Homes. This single level has 3bd/2ba on one level. Starting @ \$649k with many available options such as: 3rd stall garage, fireplace, ++ patio space, millwork pkgs, solid surface counters, many flooring options & more. Great private master suite and vaulted main room. (Pictures are of an identical home) Now's the time to secure your Gull Lake enjoyment in 2024!

Additional Details:

| | |
|------------------------|-----------------|
| Year Built | 2024 |
| Lot Acres | 0.12 |
| Lot Dimensions | 64x83 Build Pad |
| Garage Stalls | 2 |
| School District | 181 |
| Taxes | (unreported) |
| Taxes with Assessments | (unreported) |
| Tax Year | 2023 |

Additional Features:

Basement: Block, Slab **Fuel:** Natural Gas **Garage:** 2 **Heat:** Forced Air **Sewer:** City Sewer/Connected **Water:** Shared System, Well **Air Conditioning:** Central Air

Driving Directions:

From Highway 371 in Nisswa, take Country Rd 77 West to Zorbaz. Turn Right on Lost Lake Road to Community on your right.



Listed By:
Edina Realty, Inc.

Affinity Real Estate Inc. participates in the Regional Multiple Listing Service of Minnesota, Inc Broker Reciprocity (sm) program, allowing us to display other broker's listings on our website. All properties are subject to prior sale, change or withdrawal.



Call Affinity Real Estate

218-237-3333

info@affinityrealestate.com



Affinity Real Estate - 600 Park Avenue South - Park Rapids MN 56470

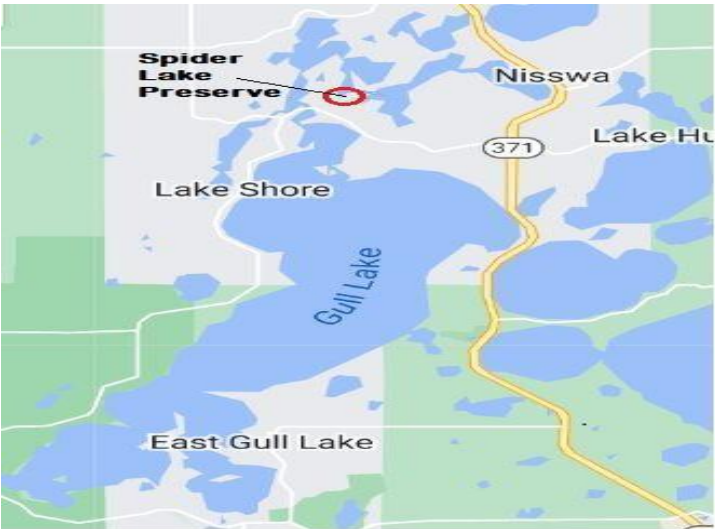


website: www.AffinityRealEstate.com | email: info@affinityrealestate.com | office: 218-237-3333 | fax: 218-237-3377

Affinity
REAL ESTATE INC

\$649,000

MLS 6454954 Lake Home
TBD Lost Lake Road
Nisswa MN 56468



website: www.AffinityRealEstate.com | email: info@affinityrealestate.com | office: 218-237-3333 | fax: 218-237-3377



\$649,000

MLS 6454954 Lake Home
TBD Lost Lake Road
Nisswa MN 56468



website: www.AffinityRealEstate.com | email: info@affinityrealestate.com | office: 218-237-3333 | fax: 218-237-3377



\$649,000
 MLS 6454954 Lake Home
 TBD Lost Lake Road
 Nisswa MN 56468



website: www.AffinityRealEstate.com | email: info@affinityrealestate.com | office: 218-237-3333 | fax: 218-237-3377



\$649,000
 MLS 6454954 Lake Home
 TBD Lost Lake Road
 Nisswa MN 56468



website: www.AffinityRealEstate.com | email: info@affinityrealestate.com | office: 218-237-3333 | fax: 218-237-3377



\$649,000

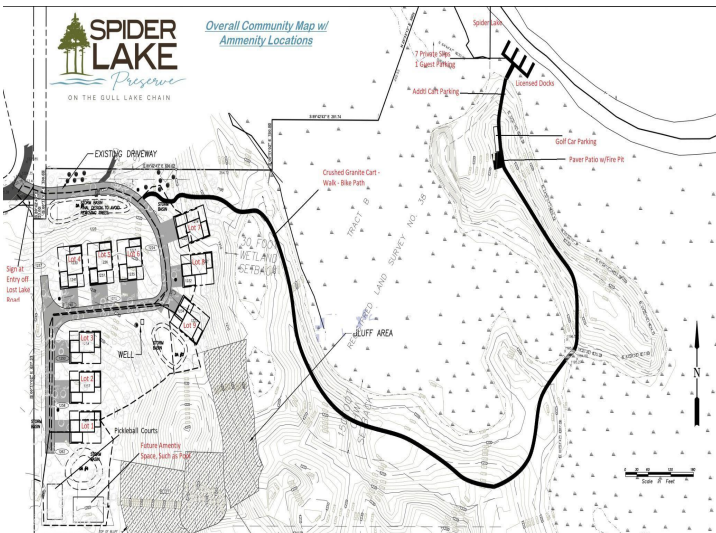
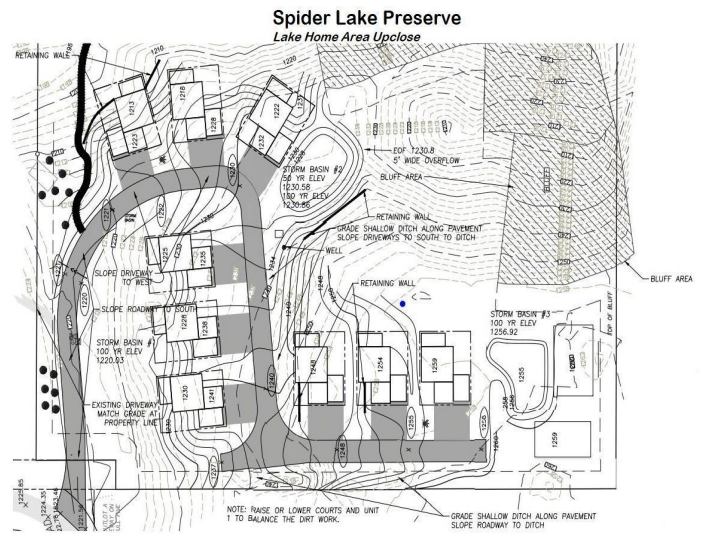
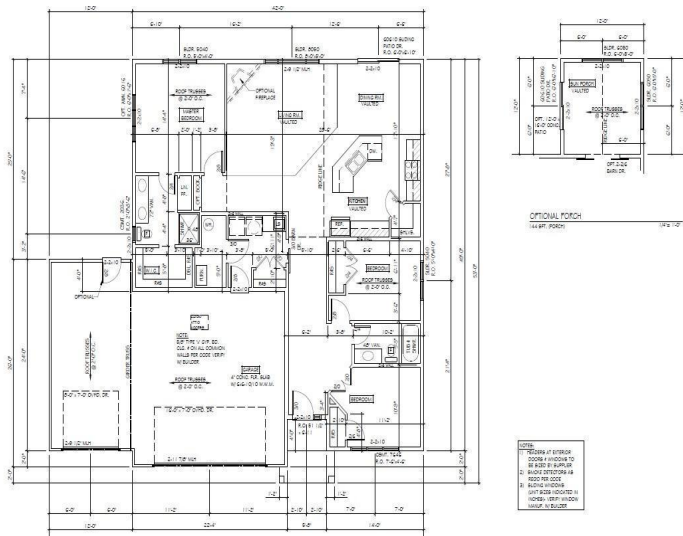
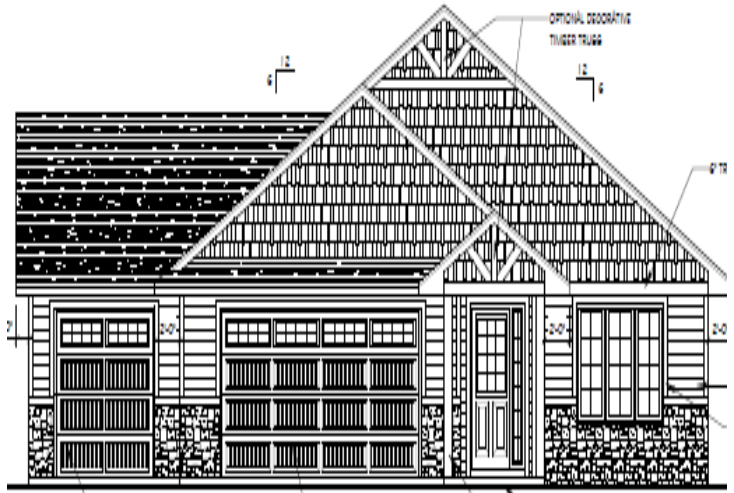
MLS 6454954 Lake Home
TBD Lost Lake Road
Nisswa MN 56468



website: www.AffinityRealEstate.com | email: info@affinityrealestate.com | office: 218-237-3333 | fax: 218-237-3377



\$649,000
 MLS 6454954 Lake Home
 TBD Lost Lake Road
 Nisswa MN 56468



Page 8 of 8