



MLS 6455958 Lake Home

**\$919,000**

3,094 sq ft  
5 bedrooms  
4 baths

8038 Lost Lake Road  
Nisswa MN 56468

Waterfront: Gull

Status: Active

#### Description:

Spider Lake Preserve on the Gull Lake Chain is now down to last 3 available lots. There is a home available to view at 8038 Lost Lake Rd #120. This community is a small & private single-family lake home community in the City of Lake Shore. This 35-acre community is nestled amongst Lost Lake Lodge, Causeway on Gull, Bar Harbor, Zorbaz, golf courses, and so much more. This private community has its own dock area, lake side patio and firepit area, pickleball court, private crushed granite path system and fine homes built by Thomas Allen Homes. This walk-out rambler home 5bd/4ba and starts at \$890k. Our model home is from the same plan, and with many of the available options is priced at \$939,500k. Now's the time to secure your Gull Lake enjoyment in 2025!

#### Additional Details:

Year Built	2023
Lot Acres	0.12
Lot Dimensions	64x83 Build Pad
Garage Stalls	3
School District	181
Taxes	(unreported)
Taxes with Assessments	(unreported)
Tax Year	2023

#### Additional Features:

**Basement:** Walkout **Fuel:** Natural Gas **Garage:** 3 **Heat:** Forced Air **Sewer:** City Sewer/Connected **Water:** Shared System, Well **Air Conditioning:** Central Air

#### Driving Directions:

From Highway 371 in Nisswa, take Country Rd 77 West to Zorbaz. Turn Right on Lost Lake Road to Community on your right.



Listed By:  
Edina Realty, Inc.

Affinity Real Estate Inc. participates in the Regional Multiple Listing Service of Minnesota, Inc Broker Reciprocity (sm) program, allowing us to display other broker's listings on our website. All properties are subject to prior sale, change or withdrawal.



Call Affinity Real Estate

**218-237-3333**

[info@affinityrealestate.com](mailto:info@affinityrealestate.com)



Affinity Real Estate - 600 Park Avenue South - Park Rapids MN 56470





website: [www.AffinityRealEstate.com](http://www.AffinityRealEstate.com) | email: [info@affinityrealestate.com](mailto:info@affinityrealestate.com) | office: 218-237-3333 | fax: 218-237-3377

**Affinity**  
REAL ESTATE INC

**\$919,000**  
MLS 6455958 Lake Home  
8038 Lost Lake Road  
Nisswa MN 56468



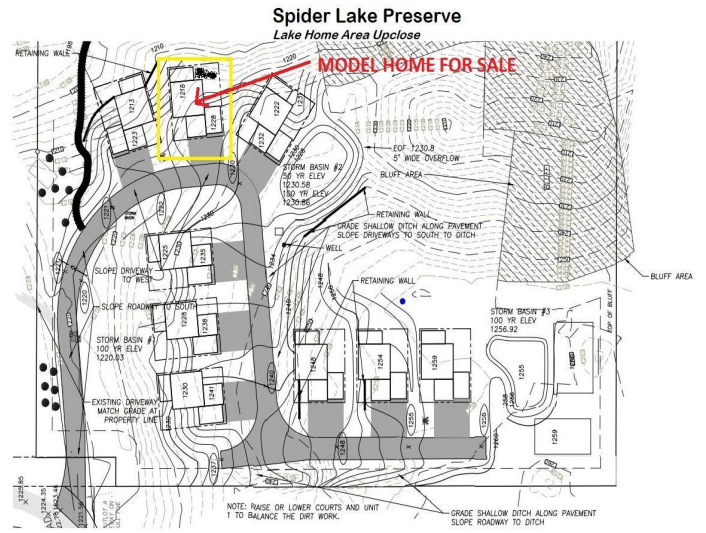


website: [www.AffinityRealEstate.com](http://www.AffinityRealEstate.com) | email: [info@affinityrealestate.com](mailto:info@affinityrealestate.com) | office: 218-237-3333 | fax: 218-237-3377



**\$919,000**  
MLS 6455958 Lake Home  
8038 Lost Lake Road  
Nisswa MN 56468





**SPIDER LAKE**  
*Preserve*  
ON THE GULL LAKE CHAIN

 Spider Lake on Gull Lake Chain	 Outdoor Fireplace
 Outdoor Patio	 Pickleball Court
 Grill/ Cookouts	 Cart to Boat or Out for Dinner
 Bike in the Beautiful Surroundings	 Boat Ramp on Gull Lake
 Dining; Zorbaz, Lost Lake Lodge	 Great Hiking & Walking

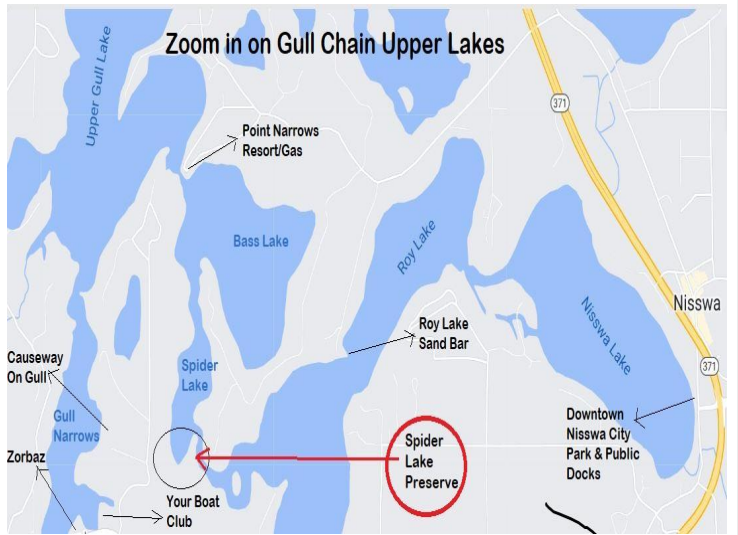


website: [www.AffinityRealEstate.com](http://www.AffinityRealEstate.com) | email: [info@affinityrealestate.com](mailto:info@affinityrealestate.com) | office: 218-237-3333 | fax: 218-237-3377

**Affinity**  
REAL ESTATE INC

**\$919,000**  
MLS 6455958 Lake Home  
8038 Lost Lake Road  
Nisswa MN 56468





website: [www.AffinityRealEstate.com](http://www.AffinityRealEstate.com) | email: [info@affinityrealestate.com](mailto:info@affinityrealestate.com) | office: 218-237-3333 | fax: 218-237-3377



**\$919,000**  
 MLS 6455958 Lake Home  
 8038 Lost Lake Road  
 Nisswa MN 56468



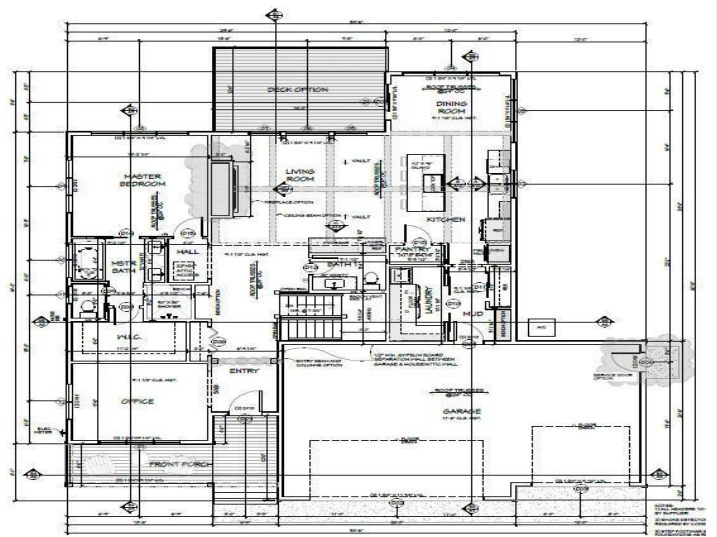
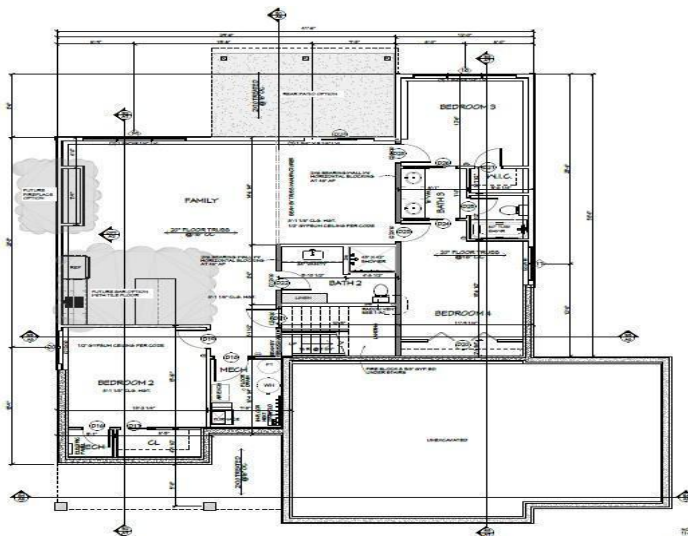


website: [www.AffinityRealEstate.com](http://www.AffinityRealEstate.com) | email: [info@affinityrealestate.com](mailto:info@affinityrealestate.com) | office: 218-237-3333 | fax: 218-237-3377



**\$919,000**  
 MLS 6455958 Lake Home  
 8038 Lost Lake Road  
 Nisswa MN 56468





website: [www.AffinityRealEstate.com](http://www.AffinityRealEstate.com) | email: [info@affinityrealestate.com](mailto:info@affinityrealestate.com) | office: 218-237-3333 | fax: 218-237-3377



**\$919,000**  
 MLS 6455958 Lake Home  
 8038 Lost Lake Road  
 Nisswa MN 56468



website: [www.AffinityRealEstate.com](http://www.AffinityRealEstate.com) | email: [info@affinityrealestate.com](mailto:info@affinityrealestate.com) | office: 218-237-3333 | fax:218-237-3377



**\$919,000**

MLS 6455958 Lake Home  
8038 Lost Lake Road  
Nisswa MN 56468