



MLS 6456163 Lake Home

\$989,900

3,094 sq ft
5 bedrooms
4 baths

8038 Lost Lake Road
Nisswa MN 56468

Waterfront: Spider Lake (Lake
Shore City)

Status: Canceled

Description:

Spider Lake Preserve on the Gull Lake Chain is now open for building. This listing is for our almost complete Model Home. It is located at 8038 Lost Lake Rd #120. This home is for sale and available for your 2024 Gull Lake Chain enjoyment. On top of this, 6 lots remain for your building consideration of 4 home plans. This community is a small & private single-family lake home community in the City of Lake Shore. This 35-acre community is nestled amongst Lost Lake Lodge, Causeway on Gull, Bar Harbor, Zorbaz, golf courses, and so much more. This private community has its own dock area, lake side patio and firepit area, pickleball court, private crushed granite path system and fine homes built by Thomas Allen Homes. This walk-out rambler home 5bd/4ba includes: front and rear decks, w/o patio, landscaping, 2 fireplaces, full bar in LL, tile shower custom cabinets, interior beam work, and more. Now's the time to secure your Gull Lake enjoyment in 2024!

Additional Details:

Year Built	2023
Lot Acres	0.12
Lot Dimensions	64x83 Build Pad
Garage Stalls	3
School District	181
Taxes	(unreported)
Taxes with Assessments	(unreported)
Tax Year	2023

Additional Features:

Basement: Walkout **Fuel:** Natural Gas **Garage:** 3 **Heat:** Forced Air **Sewer:** City Sewer/Connected **Water:** Shared System, Well **Air Conditioning:** Central Air

Driving Directions:

From Highway 371 in Nisswa, take Country Rd 77 West to Zorbaz. Turn Right on Lost Lake Road to Community on your right.



Listed By:
Edina Realty, Inc.

Affinity Real Estate Inc. participates in the Regional Multiple Listing Service of Minnesota, Inc Broker Reciprocity (sm) program, allowing us to display other broker's listings on our website. All properties are subject to prior sale, change or withdrawal.



Call Affinity Real Estate

218-237-3333

info@affinityrealestate.com



Affinity Real Estate - 600 Park Avenue South - Park Rapids MN 56470



website: www.AffinityRealEstate.com | email: info@affinityrealestate.com | office: 218-237-3333 | fax: 218-237-3377

Affinity
REAL ESTATE INC

\$989,900
MLS 6456163 Lake Home
8038 Lost Lake Road
Nisswa MN 56468



website: www.AffinityRealEstate.com | email: info@affinityrealestate.com | office: 218-237-3333 | fax: 218-237-3377

Affinity
REAL ESTATE INC

\$989,900

MLS 6456163 Lake Home
8038 Lost Lake Road
Nisswa MN 56468



website: www.AffinityRealEstate.com | email: info@affinityrealestate.com | office: 218-237-3333 | fax: 218-237-3377

Affinity
REAL ESTATE INC

\$989,900

MLS 6456163 Lake Home
8038 Lost Lake Road
Nisswa MN 56468



website: www.AffinityRealEstate.com | email: info@affinityrealestate.com | office: 218-237-3333 | fax: 218-237-3377

Affinity
REAL ESTATE INC

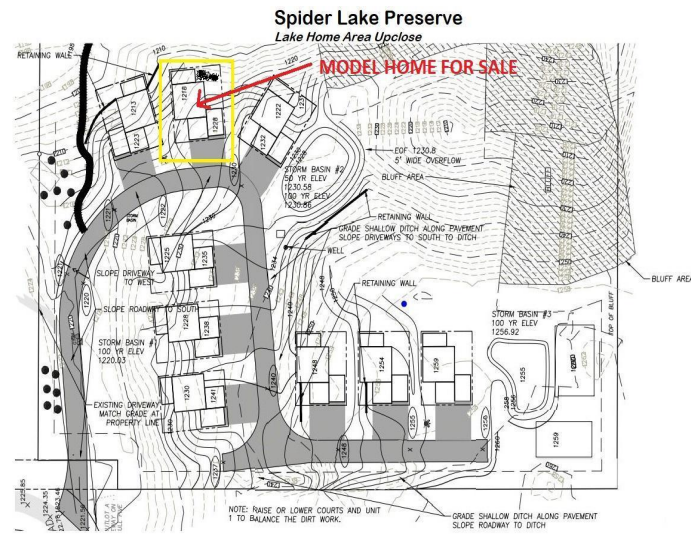
\$989,900
MLS 6456163 Lake Home
8038 Lost Lake Road
Nisswa MN 56468



website: www.AffinityRealEstate.com | email: info@affinityrealestate.com | office: 218-237-3333 | fax: 218-237-3377



\$989,900
MLS 6456163 Lake Home
8038 Lost Lake Road
Nisswa MN 56468



website: www.AffinityRealEstate.com | email: info@affinityrealestate.com | office: 218-237-3333 | fax: 218-237-3377



\$989,900
 MLS 6456163 Lake Home
 8038 Lost Lake Road
 Nisswa MN 56468

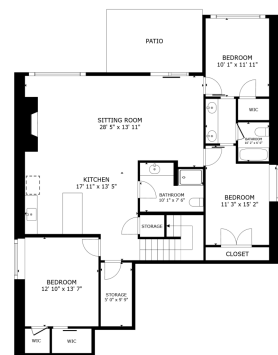


website: www.AffinityRealEstate.com | email: info@affinityrealestate.com | office: 218-237-3333 | fax: 218-237-3377



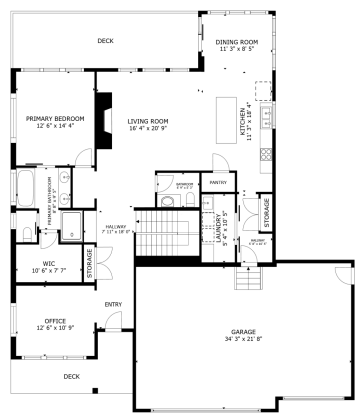
\$989,900

MLS 6456163 Lake Home
8038 Lost Lake Road
Nisswa MN 56468



FLOOR 1

GROSS INTERNAL AREA
FLOOR 1 1,415 sq.ft., FLOOR 2 1,564 sq.ft.,
EXCLUDED AREAS : PATIO 147 sq.ft., GARAGE 727 sq.ft., DECK 248 sq.ft., DECK 125 sq.ft.,
TOTAL : 2,879 sq.ft.
SIZES AND DIMENSIONS ARE APPROXIMATE, ACTUAL MAY VARY.



FLOOR 2

GROSS INTERNAL AREA
FLOOR 1 1,415 sq.ft., FLOOR 2 1,564 sq.ft.,
EXCLUDED AREAS : PATIO 147 sq.ft., GARAGE 727 sq.ft., DECK 248 sq.ft., DECK 125 sq.ft.,
TOTAL : 2,879 sq.ft.
SIZES AND DIMENSIONS ARE APPROXIMATE, ACTUAL MAY VARY.



website: www.AffinityRealEstate.com | email: info@affinityrealestate.com | office: 218-237-3333 | fax:218-237-3377



\$989,900
MLS 6456163 Lake Home
8038 Lost Lake Road
Nisswa MN 56468