



MLS 6456240 Commercial Sale

\$156,250

Description:

Welcome to Toy Store 34. The Lakes areas newest Common Interest Storage Condo Development. Two Building sizes Available 32' x 64' (2048 S/F) and 40' x 64' (2560 S/F) all feature 16' wide x 14' high Insulated Overhead Door with Commercial Door Opener, 4 Windows, Concrete floor with Drain, Vaulted Ceiling Rafters, Walk-in Service door with Keypad Deadbolt, 200 Amp Electric Service, 3' Wide concrete apron across the entire width of the Building. Conveniently Located 1 Mile East of Detroit Lakes on Hwy 34 and only minutes from Detroit Lake.

Additional Details:

Year Built	2023
Lot Acres	11.92
Lot Dimensions	40 x 64
Garage Stalls	8
School District	22
Taxes	\$1
Taxes with Assessments	\$1
Tax Year	2023

Additional Features:

Fuel: Electric **Garage:** 8 **Heat:** None **Sewer:** None **Water:** None

Driving Directions:

Take HWY 34 east of Detroit Lakes 1 mile. Property is on the south side of the road



Listed By:
HomeSmart Adventure Realty

Affinity Real Estate Inc. participates in the Regional Multiple Listing Service of Minnesota, Inc Broker Reciprocity (sm) program, allowing us to display other broker's listings on our website. All properties are subject to prior sale, change or withdrawal.



Call Affinity Real Estate

218-237-3333

info@affinityrealestate.com



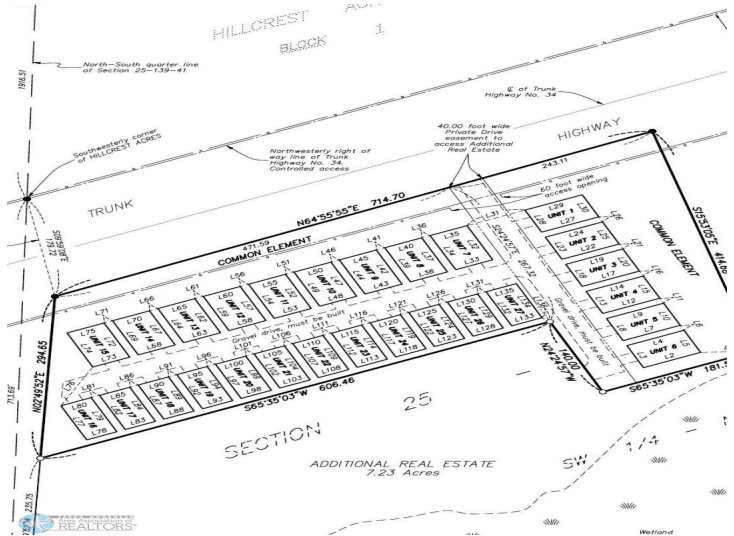
Affinity Real Estate - 600 Park Avenue South - Park Rapids MN 56470



website: www.AffinityRealEstate.com | email: info@affinityrealestate.com | office: 218-237-3333 | fax: 218-237-3377



\$156,250
MLS 6456240 Commercial
Sale
28603 State Highway 34
Detroit Lakes MN 56501



website: www.AffinityRealEstate.com | email: info@affinityrealestate.com | office: 218-237-3333 | fax: 218-237-3377



\$156,250
 MLS 6456240 Commercial
 Sale
 28603 State Highway 34
 Detroit Lakes MN 56501